

INFOMAR

Integrated Mapping for the
Sustainable Development
of Ireland's Marine Resource

Interactive Web Data Delivery System

providing open and free access to Ireland's
marine data via the internet

Gráinne O'Shea



<http://www.infomar.ie>



Data Access: Interactive Web Data Delivery System (IWDDS)

- **Why?** Provide digital data for free download
- **Solution?** Software & Hardware
- **What?** Data that can be downloaded
- **How?** You can download data
- **Success?** Who uses the data?
- **Cost?**
- **Future Plans?**
- **Summary**

Why? Provide free digital data



INFOMAR

Integrated Mapping for the
Sustainable Development
of Ireland's Marine Resource

- October 2006 INFOMAR put out a tender for a web-based data delivery system which would:
 - promote and attract interest in Irish marine datasets
 - support easy and intuitive access to interested parties world-wide.
- **Government Decision** – 21th February 2007 - New Policy on **Free & Open Access** to Geological Survey of Ireland (GSI) Data
- Seabed (INSS & INFOMAR) data in their available formats to be available (via the Internet) by 30 June 2007.
- All other GSI digital data, in their available digital formats, to be available over the Internet by the end of 2007.

Solution? Intrepid JetStream



INFOMAR

Integrated Mapping for the Sustainable Development of Ireland's Marine Resource

- Intrepid Geophysics of Australia (www.intrepid-geophysics.com)
- JetStream is a web data serving solution based on a variety of Open Data Access Protocols.
- Simple and quick – to setup, use and maintain
- A client uses a standard web-browser to search, select and download data.

Interactive Web Data Delivery System—Home

Data available for download from Geological Survey of Ireland archives

Map Control

Use the INFOMAR GIS Viewer

Click the button below to view and query the data available before downloading it

INFOMAR GIS Viewer

Lat Long Rectangle

N Lat

W Long

E Long

S Lat

Use decimal degrees (example 137.821)

Quick Start

1:250k map sheet

Choose map name or number

Clear rectangle & map sheet

Proceed to download

Additional Layers

- INFOMAR Data Coverage
- Bathymetry
- Bathymetry Contours
- Offshore Faults
- Offshore Geology
- Offshore Igneous
- Offshore Intrusives
- Offshore Tectonic Elements
- Onshore Geology

Load checked layers

Basic Instructions

Option 1

In the map at the left of the window, drag a rectangle to define your area of interest. Your extents automatically appear in the **Lat Long Rectangle**.

Choose **Proceed to download** to view the data available for your area of interest.

Option 2

Enter the extents of your area of interest in **Lat Long Rectangle**. Use decimal degrees (for example, 137.821).

Choose **Proceed to download** to view the data available for your area of interest.

Option 3

Use the **Quick Start** drop-down list to select an area of interest based on a 250k map sheet. The extents of the sheet automatically appear in the **Lat Long Rectangle**.

Choose **Proceed to download** to view the data available for your area of interest.

More information

[Detailed IWDDS help](#)

Copyright | [Disclaimer](#) | [About this website](#) | [Feedback](#) | [Privacy](#)

Solution? Software & Hardware



INFOMAR

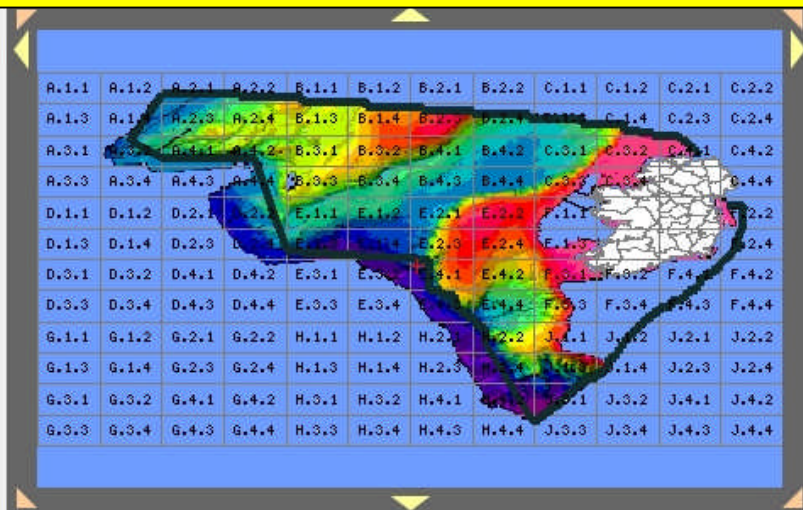
Integrated Mapping for the Sustainable Development

[GSI Mapping](#)

[INFOMAR Data Access](#)

[Contact us](#) | [Help](#)

Went live on June 1st 2007 Now in 5th year of operation



Additional Layers

- INFOMAR Data Coverage
- Bathymetry
- Bathymetry Contours
- Offshore Faults
- Offshore Geology
- Offshore Igneous
- Offshore Intrusives
- Offshore Tectonic Elements
- Onshore Geology

[Load checked layers](#)



[Show Entire Area](#)

[Clear all selections](#)

Click the button below to view and query the data available before downloading it

[INFOMAR GIS Viewer](#)

Lat Long Rectangle

N Lat

W Long

E Long

S Lat

Use decimal degrees (example 137.821)

Quick Start

1:250k map sheet

Choose map name or number

[Clear rectangle & map sheet](#)

[Proceed to download](#)

Basic Instructions

Option 1

In the map at the left of the window, drag a rectangle to define your area of interest.

Your extents automatically appear in the **Lat Long Rectangle**.

Choose **Proceed to download** to view the data available for your area of interest.

Option 2

Enter the extents of your area of interest in **Lat Long Rectangle**. Use decimal degrees (for example, 137.821).

Choose **Proceed to download** to view the data available for your area of interest.

Option 3

Use the **Quick Start** drop-down list to select an area of interest based on a 250k map sheet.

The extents of the sheet automatically appear in the **Lat Long Rectangle**.

Choose **Proceed to download** to view the data available for your area of interest.

More information

[Detailed IWDDS help](#)

Solution? Catalog



INFOMAR
Integrated Mapping for the
Sustainable Development
of Ireland's Marine Resource

The **JetCat catalog** is at the heart of the JetStream System:

all interactive client-queries interrogate the catalog rather than the binary datasets

Very simple data structure ...

a flat table; can be ASCII, Access, Oracle table, ...

– one record per dataset

– a small number of essential fields ...

» Lat/Long limits of the dataset

» URL address of the dataset

» Data-type and 'theme'

– additional user-defined fields can contain any other metadata

NAME	MINI ON	MAXI ON	MINI AT	MAXI AT	S	THEME	DATATYPE	KSIZE	DOCS	URI	LABEL	Date	Scale	CSDATA	RenderStyle	Report	CELL SIZE	LICENCE	NO	DATEADDED
CV_10_01_Dublin_5m_WGS84.zip	-6.0424	-5.47105	53.0487	53.90951	VGS84	ArcGISBathymetryLeg	File	24040		http://localho	CV_10_01_Dublin_5m_WGS84.zip	Unkn	Unkn	WGS84	urlink	Unknowr	Unknown	Unknown		19/05/2011
B23_bs_CEL04_bs.tif	-10.8458	-10.0858	51.764	52.03719	VGS84	Backscatter	GRID	18819		http://localho	B23_bs_CEL04_bs.tif	Unkn	Unkn	WGS84	FalseColour	Unknowr	20	Unknown		23/03/2009
9949_DIR	-7.40087	-7.28838	52.0345	52.03719	VGS84	Backscatter	VECTOR	1571		http://localho	9949	Unkn	Unkn	WGS84	LINE	Unknowr	Unknown	Unknown		08/04/2008
CE_07_01_West_Kerry_10M_Backsc	-11.8167	-10.0858	51.764	52.70135	VGS84	Backscatter_Tiff	File	2353		http://localho	CE_07_01_West_Kerry_10M_Backsc	Unkn	Unkn	WGS84	urlink	Unknowr	Unknown	Unknown		04/03/2010
C3212_si_NE.tif	-9.55193	-8.95187	55.7232	56.02632	VGS84	Bathymetry	GRID	3774		http://localho	60_000_Sunilluminated_C3212_si_NE	Unkn	Unkn	WGS84 / NUTM	FalseColour	Unknowr	10	Unknown		25/09/2007
Blacksod_08_EM3002D_CelticVoya	-10.3325	-10.2052	54.0127	54.04586	VGS84	Bathymetry	VECTOR	14760		http://localho	Blacksod_08_EM3002D_CelticVoya	Unkn	Unkn	WGS84	LINE	Unknowr	Unknown	Unknown		23/03/2009
CV_09_02_Kerry_5m_wgs84_DIR	-10.511	-10.1906	51.7464	51.95098	VGS84	BathymetryLeg	VECTOR	32626		http://localho	CV_09_02_Kerry_5m_wgs84	Unkn	Unkn	WGS84	POINT	Unknowr	Unknown	Unknown		05/08/2010
rectifycarlow10a - 1.2.tif	-6.55707	-6.48274	52.8185	52.84906	VGS84	Bedrock	GRID	3227		http://localho	rectifycarlow10a - 1	Unkn	Unkn	TM65 / TMOSIF	FalseColour	Unknowr	1.232014	Unknown		24/09/2007
IGH_Karst.shp	-9.94516	-6.03929	51.8421	54.82496	VGS84	Geological Heritage	VECTOR	9		http://localho	ish_Geological_Heritage_Karst_Loca	Unkn	Unkn	TM65 / TMOSIF	POINT	Unknowr	Unknown	Unknown		25/09/2007
INFOMAR LIDAR Survey Galway	-9.32811	-8.84751	53.082	53.34828	VGS84	GOOGLE	File	2661		http://localho	INFOMAR LIDAR Survey Galway Be	Unkn	Unkn	WGS84	POINT	Unknowr	Unknown	Unknown		04/02/2010
absolute_Gravity_100.grd	-11.5174	-10.4577	51.6999	52.20174	VGS84	Gravity	GRID	40		http://localho	2005_CEO5_04_Gravity_absolute_Grs	Unkn	Unkn	WGS84 / NUTM	PseudoColour	Unknowr	100	Unknown		28/09/2007
gravity_zone2.gdb	-10.6735	-6.69433	54.1923	56.26638	VGS84	Gravity	VECTOR	99711		http://localho	GW_2003_2004_Gravity_zone2_Dat	Unkn	Unkn	WGS84 / NUTM	LINE	Unknowr	Unknown	Unknown		28/09/2007
Zone_3_Full_Bouguer_Gravity_1km	-26.579	-4.547	45.742	59.242	VGS84	GravityArcGIS	File	134		http://localho	Zone_3_Full_Bouguer_Gravity_1km	Unkn	Unkn	WGS84	urlink	Unknowr	Unknown	Unknown		14/05/2010
LIDAR_2003_Clew_Bay_5m_UTM	-9.95927	-9.54169	53.7549	53.89646	VGS84	Lidar	VECTOR	17684		http://localho	LIDAR_2003_Clew_Bay_5m_UTM_L	Unkn	Unkn	WGS84 / UTM	POINT	Unknowr	Unknown	Unknown		20/05/2011
Survey_Polygon_2003_2011_WGS84	-8.16.0035	-5.49282	51.2822	56.83517	VGS84	Offshore Shapefiles	VECTOR	912		http://localho	Survey_Polygon_2003_2011_WGS84	Unkn	Unkn	WGS84	POLYGON	Unknowr	Unknown	Unknown		26/10/2011
CV_07_02_Bantry_Dunmanus_Cork	-10.1075	-6.00401	50.6651	53.02615	VGS84	Report	File	53		http://localho	CV_07_02_Bantry_Dunmanus_Cork	Unkn	Unkn	WGS84	urlink	Unknowr	Unknown	Unknown		13/09/2010

What? Data available to download



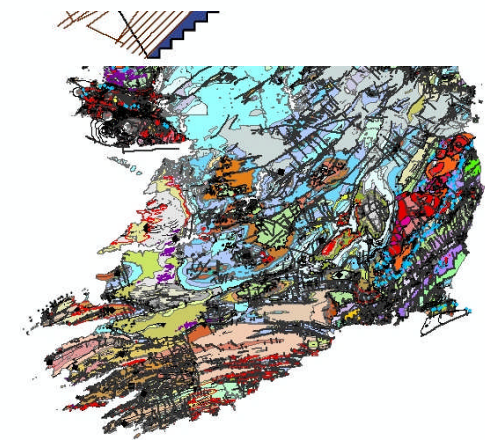
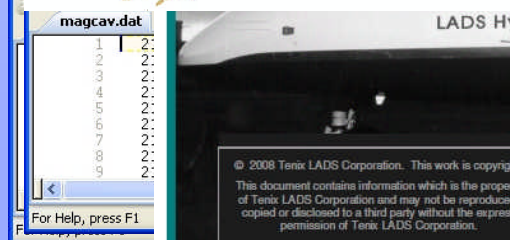
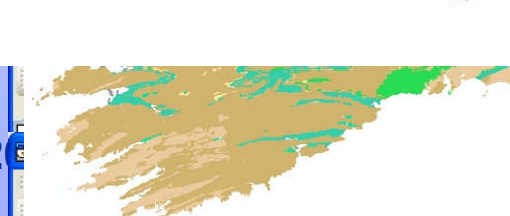
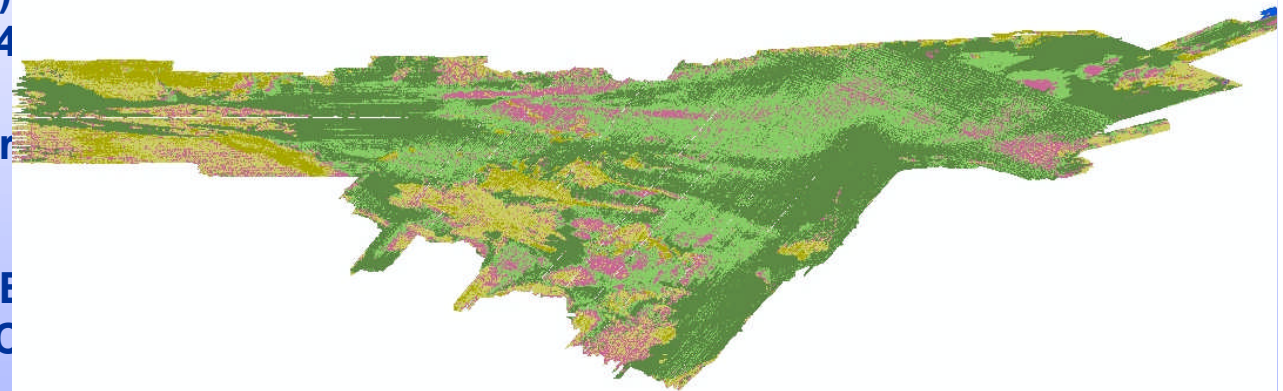
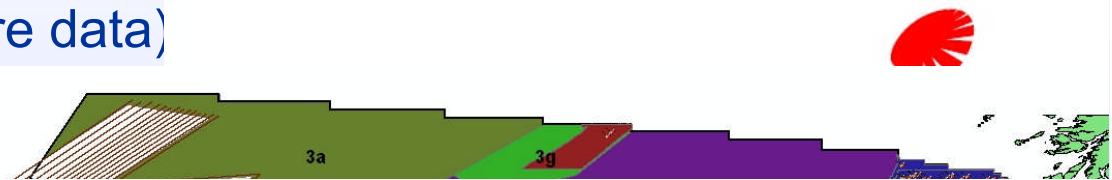
INFOMAR

Integrated Mapping for the Sustainable Development of Ireland's Marine Resource

Presently, **1.5 TB** of GSI data covering Ireland both onshore and offshore acquired at a cost of €32m is available free to download

1.2 TB is INFOMAR (offshore data)

- Bathymetry (ASCII, GRID) 0.99TB
- Six inch Bedrock Geotiff Rasters
- Backscatter (ASCII, GRID)
- Offshore Geotiff Rasters 4
- Bathymetric Lidar (ASCII,
- Offshore Geophysics – Gr (ASCII, GRID) 6.5GB
- Google .kmz 2.6GB
- Fledermaus .scene 2.33GB
- Onshore geophysics (ASC
- Reports 1.7GB
- ESRI Shapefiles onshore 1.4GB
- ESRI Shapefiles offshore 755MB
- Seabed classification (ESRI GRID) 26



How? Download Data



INFOMAR

Integrated Mapping for the Sustainable Development of Ireland's Marine Resource

GSI Website

<http://www.gsi.ie/mapping/>

INFOMAR Website

<http://www.infomar.ie/>

Directly on IWDDS w

<https://jetstream.gsi.ie/>

Interactive Web Data Delivery System—Home

Data available for download from Geological Survey of Ireland archives

Map Control

R.1.1	R.1.2	R.2.1	R.2.2	R.1.1	R.1.2	B.2.1	B.2.2	O.1.1	O.1.2	O.2.1	O.2.2
R.1.3	R.1.4	R.2.3	R.2.4	B.1.1	B.1.2	B.1.3	B.1.4	B.2.1	B.2.2	B.3.1	B.3.2
R.3.1	R.3.2	R.4.1	R.4.2	E.3.1	E.3.2	E.4.1	E.4.2	O.3.1	O.3.2	O.4.1	O.4.2
R.3.3	R.3.4	R.4.3	R.4.4	B.3.1	B.3.2	B.3.3	B.3.4	B.4.1	B.4.2	B.4.3	B.4.4
D.1.1	D.1.2	D.2.1	D.2.2	H.1.1	H.1.2	H.1.3	H.1.4	F.1.1	F.1.2	F.2.1	F.2.2
D.1.3	D.1.4	D.2.3	D.2.4	H.2.1	H.2.2	H.2.3	H.2.4	F.3.1	F.3.2	F.3.3	F.3.4
D.3.1	D.3.2	D.4.1	D.4.2	E.3.1	E.3.2	E.4.1	E.4.2	F.4.1	F.4.2	F.4.3	F.4.4
D.3.3	D.3.4	D.4.3	D.4.4	E.3.3	E.3.4	E.4.3	E.4.4	F.3.1	F.3.2	F.3.3	F.3.4
G.1.1	G.1.2	G.2.1	G.2.2	H.1.1	H.1.2	H.1.3	H.1.4	J.2.1	J.2.2	J.2.3	J.2.4
G.1.3	G.1.4	G.2.3	G.2.4	H.1.3	H.1.4	H.2.3	H.2.4	J.1.1	J.1.2	J.1.3	J.1.4
G.3.1	G.3.2	G.4.1	G.4.2	H.3.1	H.3.2	H.4.1	H.4.2	J.3.1	J.3.2	J.4.1	J.4.2
G.3.3	G.3.4	G.4.3	G.4.4	H.3.3	H.3.4	H.4.3	H.4.4	J.3.3	J.3.4	J.4.3	J.4.4

Additional Layers

- INFOMAR Data Coverage
- Bathymetry
- Bathymetry Contours
- Offshore Faults
- Offshore Geology
- Offshore Igneous
- Offshore Intrusives
- Offshore Tectonic Elements
- Onshore Geology

Use the INFOMAR GIS Viewer

Click the button below to view and query the data available before downloading it

Basic Instructions

Option 1

In the map at the left window, drag a rectangle to define your area of interest. Your extents automatically appear in the **Lat Long Rectangle**.

Choose **Proceed to view the data available** to view the data available in your area of interest

Option 2

Enter the extents of interest in **Lat Long Rectangle**. Use decimal degrees (for example, 137.821)

Choose **Proceed to view the data available** to view the data available in your area of interest

Option 3

Use the **Quick Start** list to select an area based on a 250k map sheet. The extents of the selection automatically appear in **Lat Long Rectangle**.

Choose **Proceed to view the data available** to view the data available in your area of interest

Quick Start

1:250k map sheet

Choose map name or number

Copyright | Disclaimer | About this website | Feedback | Privacy

selects a data type (vector, gridded, report, feldermaus, google), a region (onshore or offshore) and a theme (bathymetry, backscatter, bedrock etc).

Depending on the user's chosen criteria and area of interest, the system then returns a listing of all of the data it contains of that type within that area. The user can browse through and preview this listing.

After making selections for parts or all of the data listed, a user submits their data request. The request gets queued for action by the system. When the request has been acted upon and completed by the system, the IWDDS then emails the user who made the request, giving them a secure FTP link to download the data.

Additional features such as end user map creation on the fly and end user on the fly gridding of the XYZ datasets is also available.

[Back to Top](#)

Data Access – IWDDS – Step 1

Select your area of interest



INFOMAR

Integrated Mapping for the Sustainable Development of Ireland's Marine Resource

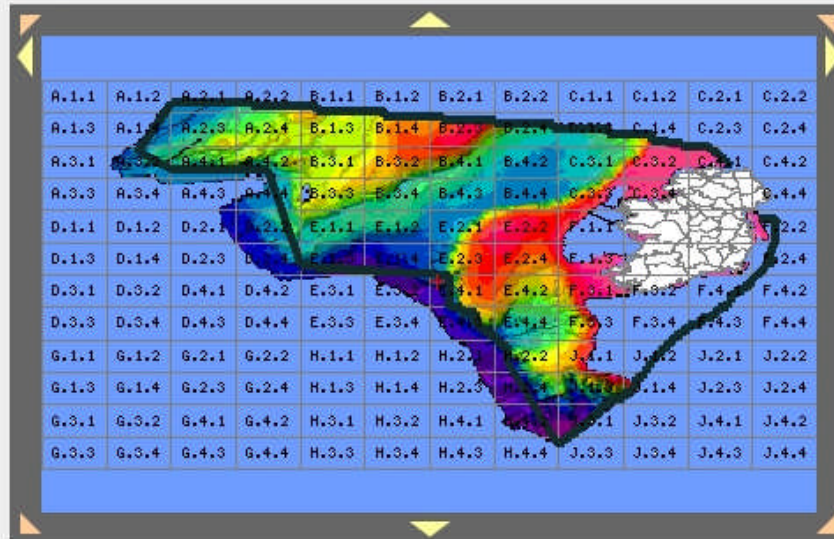


Interactive Web Data Delivery System—Home

[GSI Mapping](#)
[INFOMAR Data Access](#)
[Contact us](#) | [Help](#)

Data available for download from Geological Survey of Ireland archives

Map Control



Additional Layers

- INFOMAR Data Coverage
- Bathymetry
- Bathymetry Contours
- Offshore Faults
- Offshore Geology
- Offshore Igneous
- Offshore Intrusives
- Offshore Tectonic Elements
- Onshore Geology

Load checked layers



Show Entire Area

Clear all selections

Use the INFOMAR GIS Viewer

Click the button below to view and query the data available before downloading it

INFOMAR GIS Viewer

Lat Long Rectangle

N Lat

W Long E Long

S Lat

Use decimal degrees (example 137.821)

Quick Start

1:250k map sheet
Choose map name or number

Clear rectangle & map sheet

Proceed to download

Basic Instructions

Option 1

In the map at the left of the window, drag a rectangle to define your area of interest.

Your extents automatically appear in the **Lat Long Rectangle**.

Choose **Proceed to download** to view the data available for your area of interest.

Option 2

Enter the extents of your area of interest in **Lat Long Rectangle**. Use decimal degrees (for example, 137.821).

Choose **Proceed to download** to view the data available for your area of interest.

Option 3

Use the **Quick Start** drop-down list to select an area of interest based on a 250k map sheet.

The extents of the sheet automatically appear in the **Lat Long Rectangle**.

Choose **Proceed to download** to view the data available for your area of interest.

More information

[Detailed IWDDS help](#)

Data Access – IWDDs – Step 1 INFOMAR Webmapping Viewer



INFOMAR

Integrated Mapping for the Sustainable Development of Ireland's Marine Resource

The screenshot shows the 'INFOMAR Public Viewer' web application. At the top, there is a navigation bar with tabs for 'Layers', 'Legend', 'Zoom Location', 'Select Data', 'Download Marine Data' (highlighted with a red box), 'WMS Link', and 'Help'. Below the navigation bar is a toolbar with various icons for map navigation and data handling. The main content area is divided into two sections. On the left, there is a 'Download Marine Data' section with the following text: 'Please note INFOMAR Data (Shapefiles) may also be downloaded from [GSI Data Downloads](#)'. Below this, it says 'Please use the navigation tools available on the toolbar above to zoom into your area of interest.' and 'When you are satisfied with your current map view please click the Area of Interest button.' A button labeled 'Area of Interest' is highlighted with a red box. Below that, it says 'Once you have selected your area of interest, you can download datasets available within your area by clicking the Download Marine Data button.' A button labeled 'Download Marine Data' is also highlighted with a red box. On the right, there is a large map area showing a bathymetric or depth map of a coastal area. The map is color-coded, with green representing shallow water and orange/brown representing deeper water. A small 'Download Marine Data' button is visible at the top of the map area. At the bottom of the map, there is a copyright notice: 'Copyright © Ordnance Survey Ireland (OSI) / Government of Ireland OSI Licence No. EN 0047207' and a map center coordinate: 'Map center: 55°33' N, 20°12' W'. At the bottom left of the screenshot, there is a scale indicator: 'Scale: 1:456 744' and a 'Map Tools' section with a 'Zoom In' button.

Data Access – IWDDS – Step 2



Select data type, region and theme

Select data type, region and theme

Data Type: Sort options.

Region:

Theme:

- Bathymetry Survey Leg ArcGIS GRID (eg CV_09_01 Shannon)
- Bathymetry Merged Survey ArcGIS GRID (eg CV02_01 & CV08_01 Donegal/Sligo).
- Bathymetry Entire Area ArcGIS GRID
- Lidar ArcGIS GRID
- Gravity ArcGIS GRID
- Magnetics ArcGIS GRID
- Seabed Classification ArcGIS GRID

Examples

			Example	
ArcGIS GRIDS	Offshore ArcGIS	Offshore Shapefiles	GIS GRID (eg Waterford 5m.zip)	Zipped 5 to 20m ArcGIS GRIDS. No clipping or projection conversions possible
ArcGIS GRIDS	Offshore ArcGIS	Magnetics ArcGIS GRID (eg Zone_3_Total_Magnetic_Intensity_(TMI)_1km_wgs84_m_tmi_z3_1kmw.zip)		Zipped ArcGIS GRIDS. No clipping or projection conversions possible
ArcGIS GRIDS	Offshore ArcGIS	Gravity ArcGIS GRID (eg Zone_3_Simple_Bouguer_Gravity_1km_wgs84.zip)		Zipped ArcGIS GRIDS. No clipping or projection conversions possible
ArcGIS GRIDS	Offshore ArcGIS	Bathymetry Survey Leg ArcGIS GRID (eg CV_09_01 Shannon)		Zipped High Resolution (5m) ArcGIS GRIDS. No clipping or projection conversions possible
Offshore Geotiffs	Offshore Geotiffs	Bathymetry Shaded Relief GeoTiffs		Zipped 2m & 5m Bathymetry Shaded Relief GeoTiffs.No clipping or projection conversions possible
Offshore Geotiffs	Offshore Geotiffs	Backscatter GeoTiffs		Zipped 2m & 5m Backscatter Shaded Relief GeoTiffs. No clipping or projection conversions possible
Vector datasets	Offshore	Bathymetry (Survey Leg)		Bathymetry (Survey Leg) eg CV_09_01 Shannon 5M ascii file
ArcGIS GRIDS	Offshore ArcGIS	Bathymetry Entire Area ArcGIS GRID		Zipped 100m, 250m & 500m ArcGIS GRIDS. No clipping or projection conversions possible
ArcGIS GRIDS	Offshore ArcGIS	Bathymetry Merged Survey ArcGIS GRID (eg CV02_01 & CV08_01 Donegal/Sligo)		Zipped High Resolution (5 - 70m) ArcGIS GRIDS eg Galway Bay, Waterford, Wexford, Donegal, Kerr Coast... No clipping or projection conversions possible
ArcGIS GRIDS	Offshore ArcGIS	LIDAR ArcGIS GRID		Zipped High Resolution (6m) ArcGIS GRIDS eg Galway Bay. No clipping or projection conversions possible
Vector datasets	Offshore	Lidar		Lidar XYZ ascii file
Vector datasets	Offshore	Bathymetry		Bathymetry XYZ ascii file
Gridded dataset	Offshore	Bathymetry		Bathymetry 500m grid .ers
Vector datasets	Onshore	Groundwater		Groundwater Shapefiles .shp
Gridded datasets	Onshore	Magnetics		First vertical derivative of TMI .ers
Gridded datasets	Onshore	Bedrock		6 inch geotiff map of geology as images .tif
Gridded datasets	Offshore	Gravity		Gravity grid .ers
Report				Survey Leg Reports.

Data Access – IWDDS – Step 3

Select Data



INFOMAR

Integrated Mapping for the Sustainable Development of Ireland's Marine Resource

Available datasets

Data type and area of interest

Datasets listed on this page fall within or intersect your area of interest.

Data Type File **Min Longitude** -10 **Min Latitude** 52.853

Theme ArcGISBathymetryLeg **Max Longitude** -8.77 **Max Latitude** 53.607

Search Results

Please select the data you wish to download. **Note:** Multiple datasets are in decreasing order of download data file size.

Download all datasets?

Report 1 of 7

Report Name	CV_09_01_Shannon_5m_wgs84.zip	Download this report? <input checked="" type="checkbox"/>	Size (31423 Kb)
Additional Information	• View report		

[Go to top](#)

Report 2 of 7

Report Name	CV_09_01_Shannon_5m_UTM29N.zip	Download this report? <input checked="" type="checkbox"/>	Size (15475 Kb)
Additional Information	• View report		

[Go to top](#)

Report 3 of 7

Report Name	CV_08_02_Aran_5m_WGS84.zip	Download this report? <input checked="" type="checkbox"/>	Size (1516 Kb)
Additional Information	• View report		

[Go to top](#)

Report 4 of 7

Report Name	CV_08_02_Galway_Gap_5m_WGS84.zip	Download this report? <input checked="" type="checkbox"/>	Size (432 Kb)
Additional Information	• View report		

[Go to top](#)

Report 5 of 7

Report Name	CV_07_01_Galway_Bay_5m_WGS84.zip	Download this report? <input checked="" type="checkbox"/>	Size (91534 Kb)
Additional Information	• View report		

[Go to top](#)

Report 6 of 7

Report Name	CV_07_01_Galway_Bay_5m_UTM29N.zip	Download this report? <input checked="" type="checkbox"/>	Size (36305 Kb)
Additional Information	• View report		

[Go to top](#)

Report 7 of 7

Report Name	IMAR_07_Galway_Bay_5m_WGS84.zip	Download this report? <input checked="" type="checkbox"/>	Size (6778 Kb)
Additional Information	• View report		

[Go to top](#)

Data Access – IWDDS – Step 4



INFOMAR

Integrated Mapping for the Sustainable Development of Ireland's Marine Resource

New User Registration

Please enter your details.

We use this information for licencing and for monitoring product usage, strictly according to our [Privacy Policy](#).

For us to accept your registration, you must complete all items marked with an asterisk *.

Licensee Specify name of your organisation. If contracting as an individual, insert your name.	*	<input type="text"/>
Title		<input type="text"/>
First Name	*	<input type="text"/>
Last Name	*	<input type="text"/>
Address line 1		<input type="text"/>
Address line 2		<input type="text"/>
Suburb/Locality:	*	<input type="text"/>
State	*	<input type="text"/>
Post Code	*	<input type="text"/>
Country	*	<input type="text" value="Ireland"/>
Telephone		<input type="text"/>
Fax		<input type="text"/>
Email Address	*	<input type="text"/>
Sector	*	<input type="radio"/> Government <input type="radio"/> General Public <input type="radio"/> Education <input type="radio"/> Private Industry <input type="radio"/> Research <input type="radio"/> Other (please specify) <input type="text"/>
Industry	*	<input type="radio"/> Agriculture, Forestry and Fisheries <input type="radio"/> Communications <input type="radio"/> Defence

Data Access – IWDDS – Step 5



INFOMAR

Integrated Mapping for the Sustainable Development of Ireland's Marine Resource

- Receive Email & Download Data

A screenshot of an email client window titled "Interactive Web Data Delivery System - Message (Plain Text)". The email is from jetstream@gsi.ie, sent on Mon 21/09/2009 13:10. The subject is "Interactive Web Data Delivery System". The body of the email contains the following text:

This is an automated message to notify you that the processing of your requested datasets using the Interactive Web Data Delivery System has been completed.

Area of interest:
Minimum longitude -20.687
Maximum longitude -19.733
Minimum latitude 55.18793
Maximum latitude 55.91708

The data are of type GRID a
The data are from the follow
bathy_supergrid_005

You can download the file f
[file=out52732.zip](#)

These downloads are intende
Processing Systems. You wi

The links will remain activ

If you are having trouble d
Delivery System Administrat
Phone: +00353 1 6782798
E-mail: jetstream@gsi.ie

A licence agreement is enclosed within the zip file. Please keep this licence with the downloaded datasets.

If you have not recently requested data from the Interactive Web Data Delivery System and believe that you should not have received this e-mail, please notify jetstream@gsi.ie

A "File Download" dialog box is overlaid on the email content. It asks "Do you want to open or save this file?" and displays the following information:

Name: out359970599456092374.zip
Type: WinZip File, 113MB
From: jetstream.gsi.ie

The dialog box has three buttons: "Open", "Save", and "Cancel". There is a checkbox labeled "Always ask before opening this type of file" which is checked. At the bottom of the dialog box, there is a warning icon and the text: "While files from the Internet can be useful, some files can potentially harm your computer. If you do not trust the source, do not open or save this file. [What's the risk?](#)"

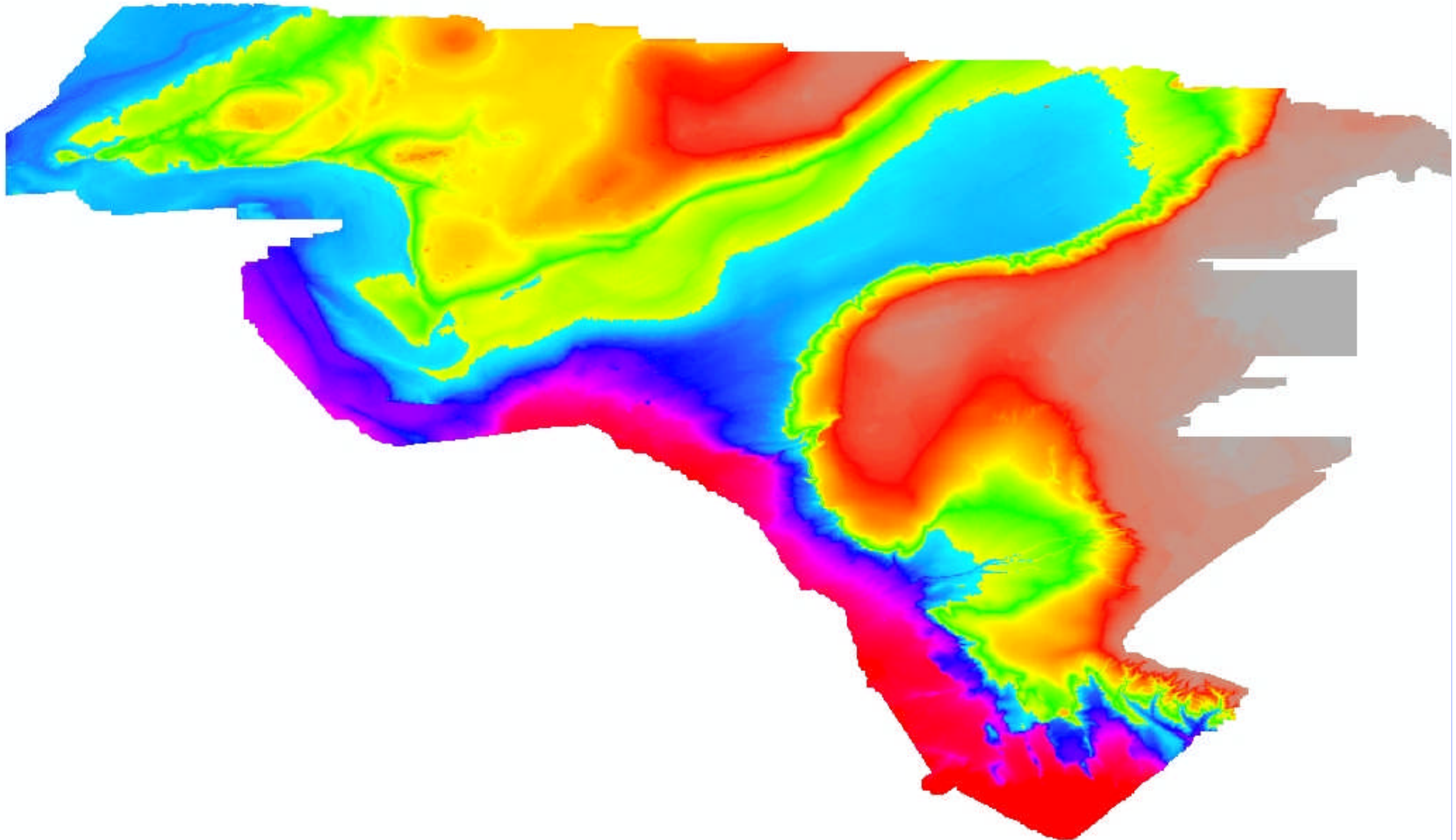
IWDDS – Grid Option - Supergrid



INFOMAR

Integrated Mapping for the
Sustainable Development
of Ireland's Marine Resource

A single grid of all our bathymetry data – gaps filled with Gebco data



Clipped from supergrid

IWDDS – Grid on the fly



INFOMAR

Integrated Mapping for the Sustainable Development of Ireland's Marine Resource

Select Gridded datasets – Offshore – Bathymetry – More – Generate & Deliver Grids

Grid Details. Extra Step

The vector dataset(s) chosen will be used to construct a grid dataset by a random point interpolation method. The cellsize entered controls the resolution of the interpolated grid dataset. Competing factors to take into account when entering the cellsize are:

- The smaller the cellsize the better the resolution
- The smaller the cellsize the larger the grid dataset
- The cellsize should be less than the average point separation

Cellsize: metres

Coord System:

Estimate size of Download

Information dataset is within the area of interest. [Preview image](#)

Select data type, region and theme

Data Type: Region a:

Region: Each reg:

Theme: Select a:

Process:

Actions:

of download data file

Download this dataset?

Columns (fields) required in download

DEPTH
 LATITUDE
 LONGITUDE

To select all columns (fields), leave all check boxes clear. Only check boxes if you are selecting specific columns (fields).

Select datum & projection

[Go to top](#)

- An ER Mapper Raster-dataset .ers (10m to 10000m resolution)
- gridded_DEPTH.ers
- Grids created on the fly

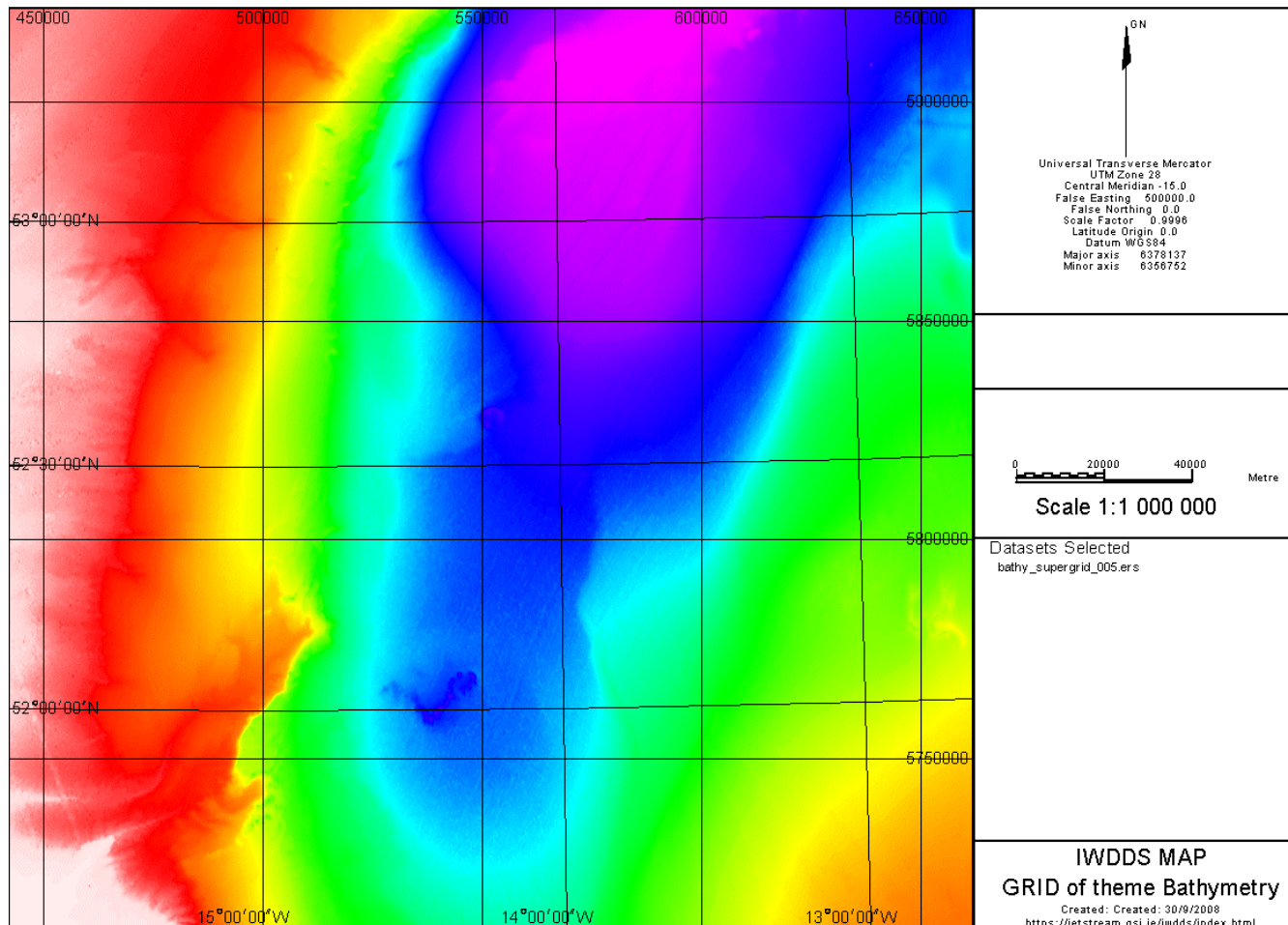
IWDDS – Create Map



INFOMAR

Integrated Mapping for the Sustainable Development of Ireland's Marine Resource

Select Gridded datasets – Offshore – Bathymetry – More – Generate & Deliver Maps



Google, Fledermaus or Report options.
Available themes.

Google, Fledermaus or Report options.
Available themes.
e.

Next

Success? The Statistics



INFOMAR

Integrated Mapping for the Sustainable Development of Ireland's Marine Resource

Over the last 5 years

Users

1,800 (unique 1,199)

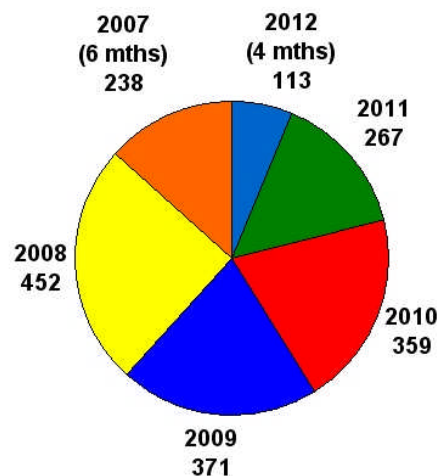
Downloads

55,736

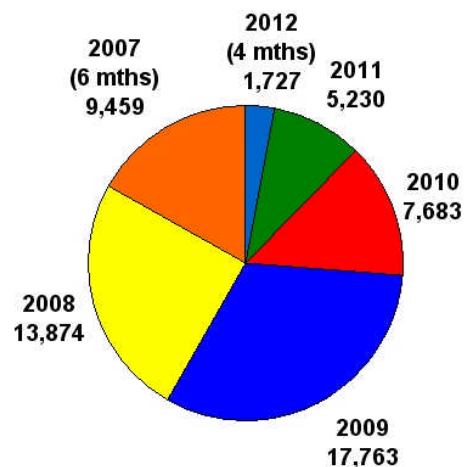
Size (terabyte)

2.86

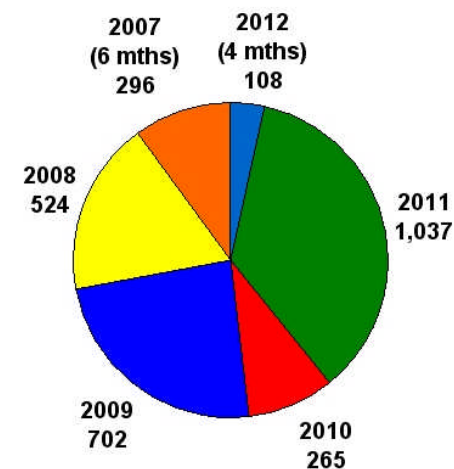
IWDDS No of Users



IWDDS No of Downloads



IWDDS GB Downloaded



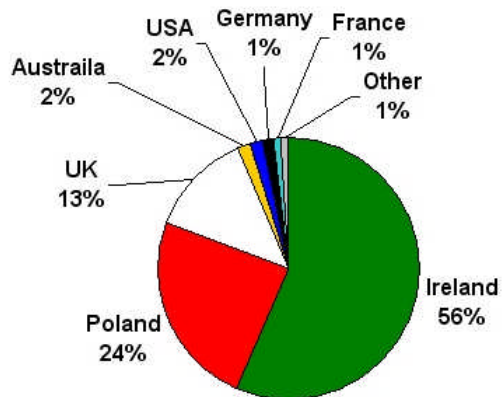
Success? Who uses the data?



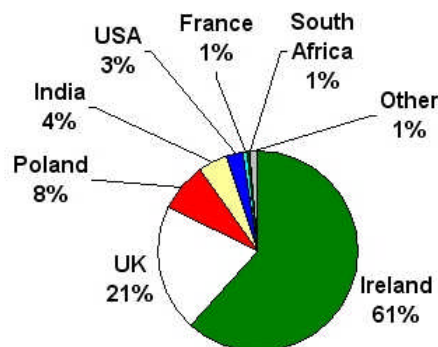
INFOMAR

Integrated Mapping for the Sustainable Development of Ireland's Marine Resource

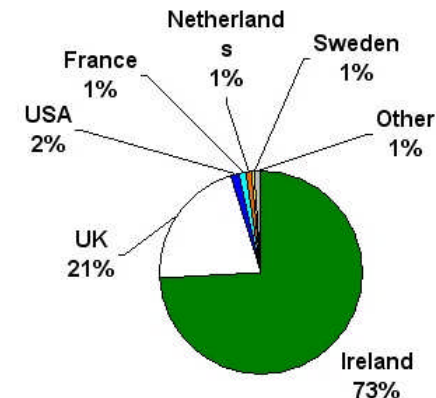
IWDDS Users by Country 2011



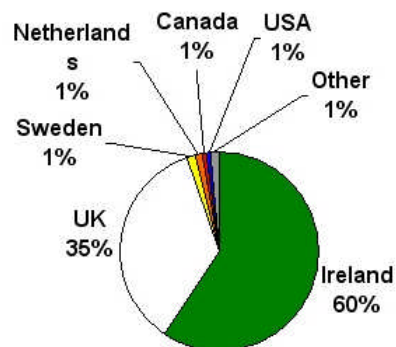
IWDDS Users by Country 2010



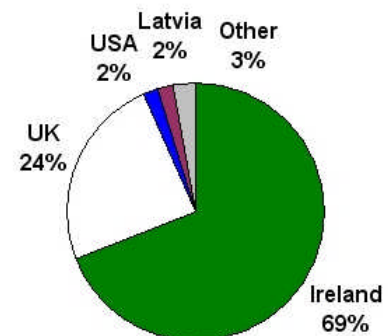
IWDDS Users by Country 2009



IWDDS Users by Country 2008



IWDDS Users by Country 2007



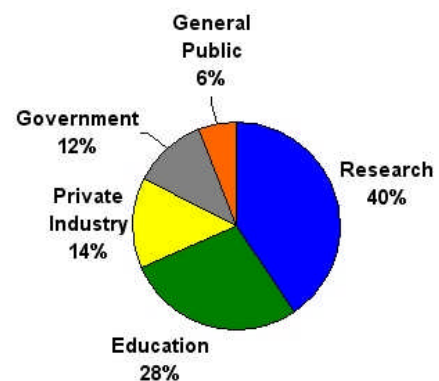
Success? Sector



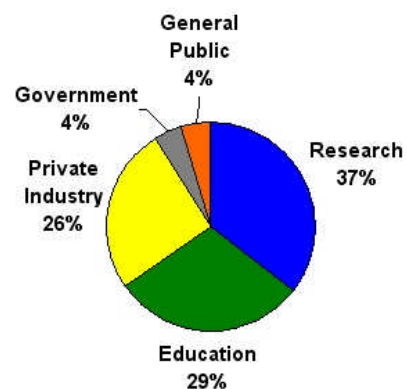
INFOMAR

Integrated Mapping for the Sustainable Development of Ireland's Marine Resource

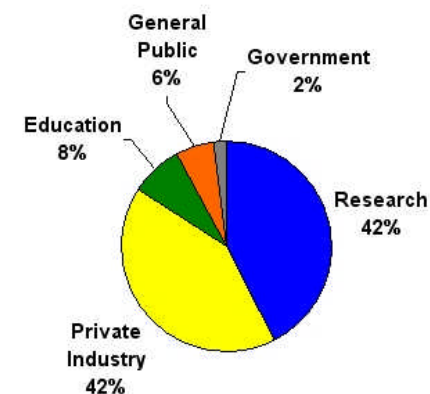
IWDDS Users by Sector 2011



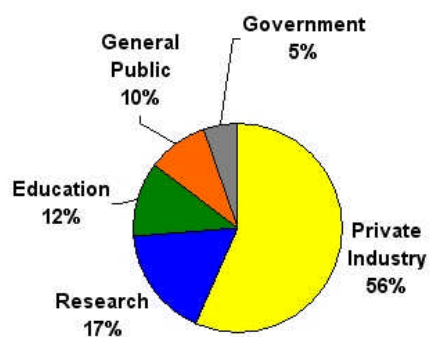
IWDDS Users by Sector 2010



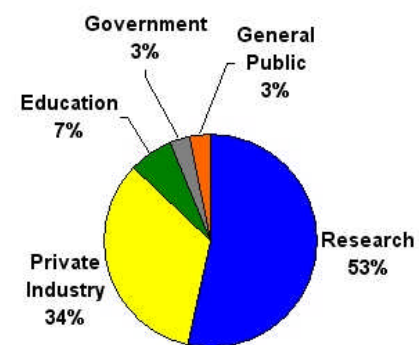
IWDDS Users by Sector 2009



IWDDS Users by Sector 2008



IWDDS Users by Sector 2007



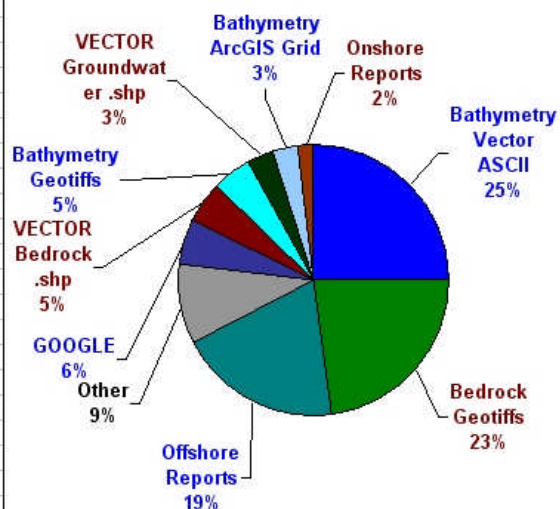
Success? Data Types downloaded



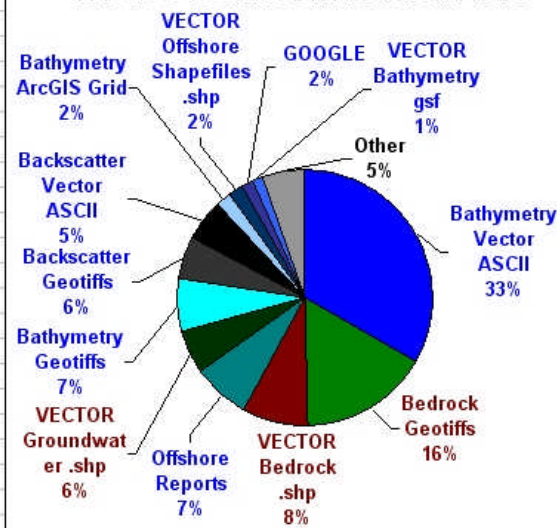
INFOMAR

Integrated Mapping for the Sustainable Development

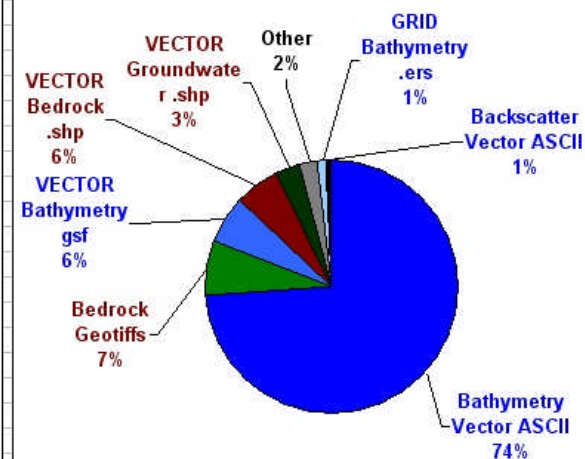
IWDDS Data Downloaded 2011



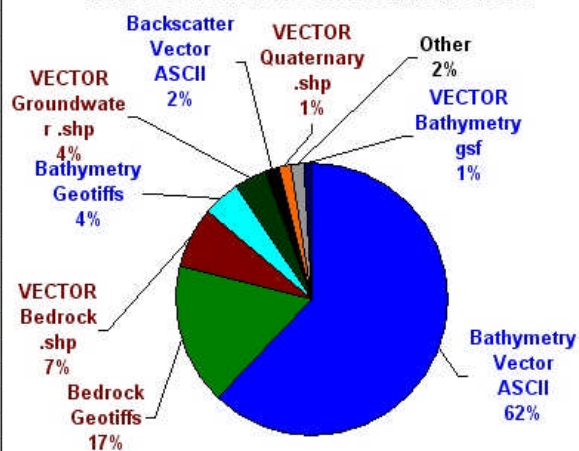
IWDDS Data Downloaded 2010



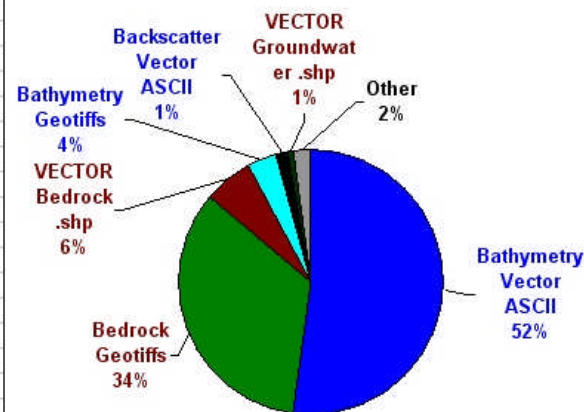
IWDDS Data Downloaded 2009



IWDDS Data Downloaded 2008



IWDDS Data Downloaded 2007

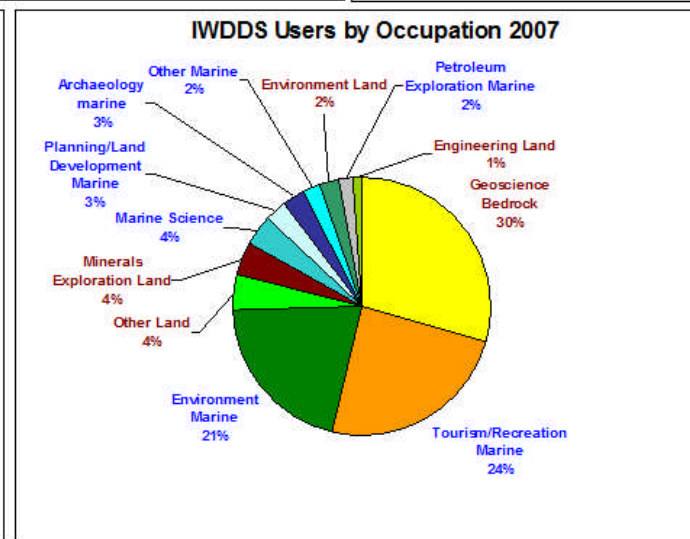
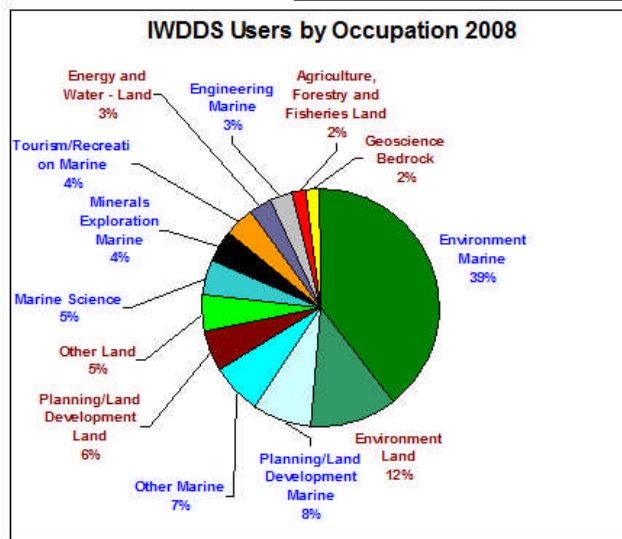
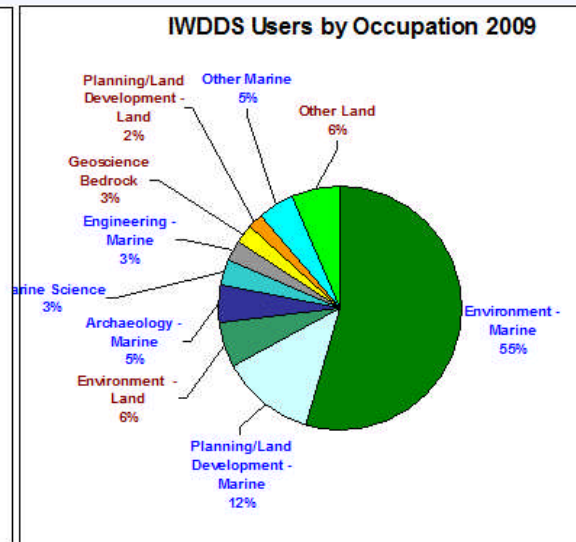
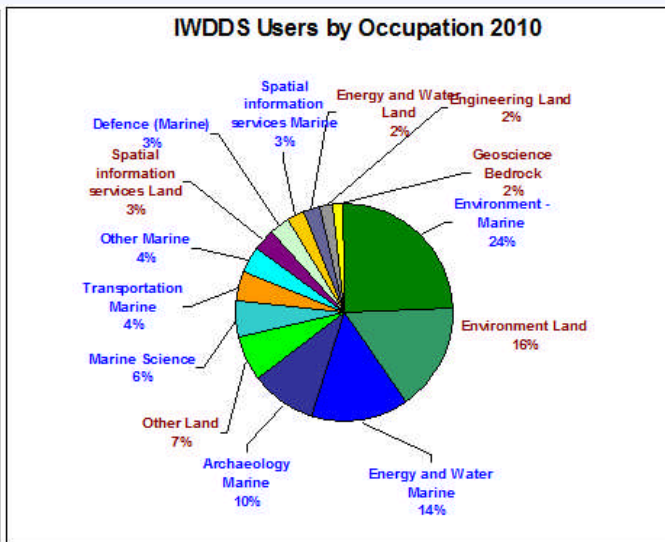
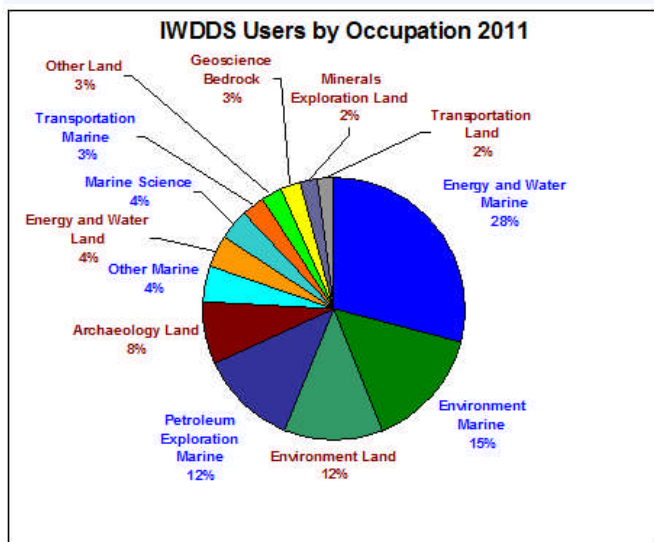


Success? Occupation



INFOMAR

Integrated Mapping for the Sustainable Development of Ireland's Marine Resource



Cost



INFOMAR

Integrated Mapping for the
Sustainable Development
of Ireland's Marine Resource

- €12,000 pa for hosting in the HEAnet
- €130,000 for hardware and DBMS from Origina (Unitech)
- €210,000 for application development from Intrepid
- €100,000 for phase 2 enhancements from Intrepid

Total €452,000

- €????? A considerable amount of sweat equity from the INFOMAR project team

Future Plans

- New Openlayers interface will work on iPad & iPhone



INFOMAR

Integrated Mapping for the Sustainable Development of Ireland's Marine Resource



Interactive Web Data Delivery System—Home

[GSI Mapping](#)
[INFOMAR Data Access](#)
[Contact us](#) | [Help](#)

Data available for download from Geological Survey of Ireland archives

Map Control



Use the INFOMAR GIS Viewer

Click the button below to view and query the data available before downloading it

Basic Instructions

Option 1

In the map at the left of the window,

Use to pan.

OPALS VIEWER

3D View

Vertical Exaggeration
Pan Angle
Tilt Angle

Elevation Model

10 km
5 km
482579 588869 1:200000

© OSI, No. EN 0047212

Department of Communications, Energy and Natural Resources
Roinn Cumarsaíde, Fuinnimh agus Acmhainní Nádurtha

OPALS VIEWER

3D View

Vertical Exaggeration
Pan Angle
Tilt Angle

Elevation Model

10 km
5 km
474232 626579 1:200000

© OSI, No. EN 0047212

Department of Communications, Energy and Natural Resources
Roinn Cumarsaíde, Fuinnimh agus Acmhainní Nádurtha



Data Access: Interactive Web Data Delivery System (IWDDS)

- **Why?** Provide digital data for free download
Ministerial Decision – 21/02/07- New Policy on Open & Free Access to Geological Survey of Ireland (GSI) Data
- **Solution?** Software & Hardware
Intrepid Geophysics JetStream was chosen as the web data serving solution
- **What?** Data that can be downloaded
Bathymetry, Backscatter, Gravity, Magnetics, Bedrock, Groundwater..ASCII,GRIDS, Geotiffs, Shapefiles, Google..
- **How?** You can download data
Using a standard web browser – select your area of interest, data type, theme, select datasets and you will be emailed a link to download a zip file.
- **Success?** Who uses the data?
Users 1,800 (unique 1,199) Downloads 55,736 Size (terabyte)2.86
- **Cost? Over the last 5 years**
€452,000
- **Future Plans?**
Openlayers, additional datasets and formats, linkup to 3D visualisation of data



INFOMAR

Integrated Mapping for the
Sustainable Development
of Ireland's Marine Resource



Grazie
Thank You



Hopefully Italy will have more
luck in Euro 2012 than Ireland
(we still hope to beat Italy on Monday)

