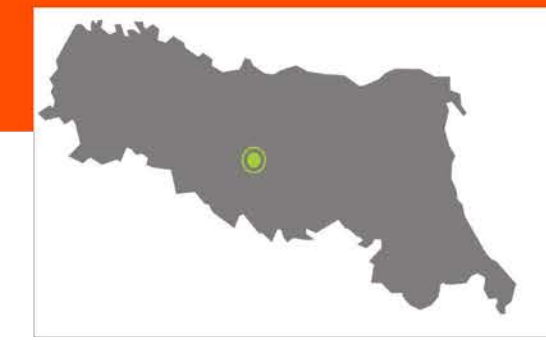
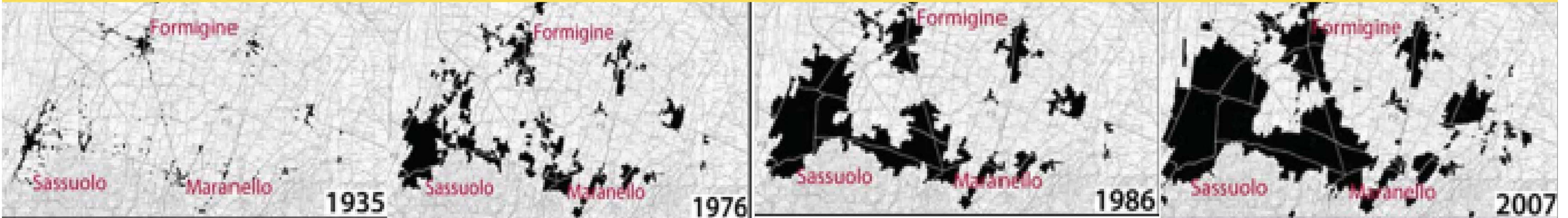


# VALORISATION OF THE PERIURBAN OPEN SPACES SYSTEM IN THE INDUSTRIAL CERAMICS DISTRICT



*An case study to limit the erosion of rural surfaces and to regeneration periurban landscape*



**Key words : land take, soil sealing, open greenspaces system, territorial planning**



## Project references

**Promoters /Lending Bodies :** Regione Emilia-Romagna, Provincia di Modena, Comune di Castelnuovo Rangone, Comune di Fiorano Modenese  
**Partner :** Comune di Formigine  
**Designers :** Studio Politecnica Ingegneria ed Architettura /Arch. Fatima Alagna –designer responsible  
**Overall project cost:** 40.000 euro **Realization :** 2009-2010  
**Sito-web:** <http://www.territorio.provincia.modena.it/>

## PROJECT LOCALIZATION



The project is localized in the territory in-between higher flatland and hills, among the urban agglomerates of Sassuolo, Fiorano Modenese, Formigine, Maranello e Castelnuovo Rangone. The central area in-between the municipalities, because of its conformation, represents the green 'hart' of the city of ceramics, taking the connotation of periurban Agricultural Park with within the urban areas and functioning as a 'showcase' for the production activities. The Eastern area from Castelnuovo distinguishes itself for a territorial project made up with routes and networks of identity, fruitive and ecological interest, able to give value and to preserve the rural space.

## PROJECT AIMS AND RESULTS



The project expectations want to represent the consequences of the PTCP – Territorial Planning of Provincial Coordination – of the Province of Modena on the urban planning instruments referring to the landscape politics and to define good practises for the improvement of the flatland-hill passages system. Among those, the intention is to limit the further erosion of rural surfaces, to safeguard the periurban open spaces, to give value to the remaining environmental resources and the communities identity aspects and to improve the urban settlements.

## PROJECT STRATEGY



The chosen strategy is to operate in order to build up in time a vast green infrastructure, an arboreal-shrubby vegetation area with features of continuity together with a pedestrian and bike network that goes through the piedmont flatland, placing itself in-between the biggest urban systems and the strip of hills; a green corridor between the rivers Secchia e Panaro, a piedmont green line that also allows relations between the inhabited centres on the via Emilia and the hill stripe.

Suoni rinnoctiali: nercani tra nascani anari di nrcni elris e natura / flaxim susanctior: naharck amon hnd-malldu antricultural historial and na

Vittoria Montaletti (\*), Raffaele Berti (\*\*), "Soil and Planning" Working Group of Emilia-Romagna  
 (\*) Regione Emilia-Romagna Servizio Pianificazione urbanistica e Paesaggio. [vmontaletti@regione.emilia-romagna.it](mailto:vmontaletti@regione.emilia-romagna.it)  
 (\*\*) Regione Emilia-Romagna Direzione Agricoltura Servizio Aiuti alle Imprese. [raberti@regione.emilia-romagna.it](mailto:raberti@regione.emilia-romagna.it)