



Mappe delle emissioni inquinanti



PROVINCIA
DI RIMINI



Fig. 7.11.8

Combustione
Energia ed Industria
della Trasformazione

[t/a]

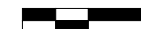
M 01

M01

 Mac1_gbe.shp

NOx = 8,45
CO = 1,44
VOC = 0,90
PTS = 0,0024
PM10 = 0,0024

2 0 2 chilometri





PROVINCIA
DI RIMINI



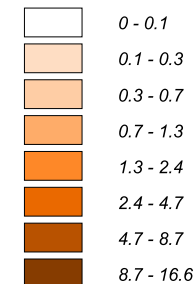
Fig. 7.11.9

Combustione
non industriale
[t/a]

M 2

M02_NOx

M02_cat.shp



2 0 2 chilometri





PROVINCIA
DI RIMINI



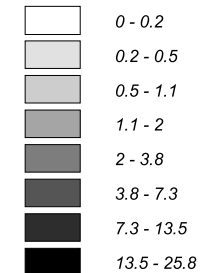
Fig. 7.11.10

Combustione
non industriale
[t/a]

M 2

M02_CO

M02_cat.shp



2 0 2 chilometri





PROVINCIA
DI RIMINI



Fig. 7.11.11

Combustione
non industriale
[t/a]

M 2

M02_VOC

M02_cat.shp



2 0 2 chilometri





PROVINCIA
DI RIMINI



Fig. 7.11.12

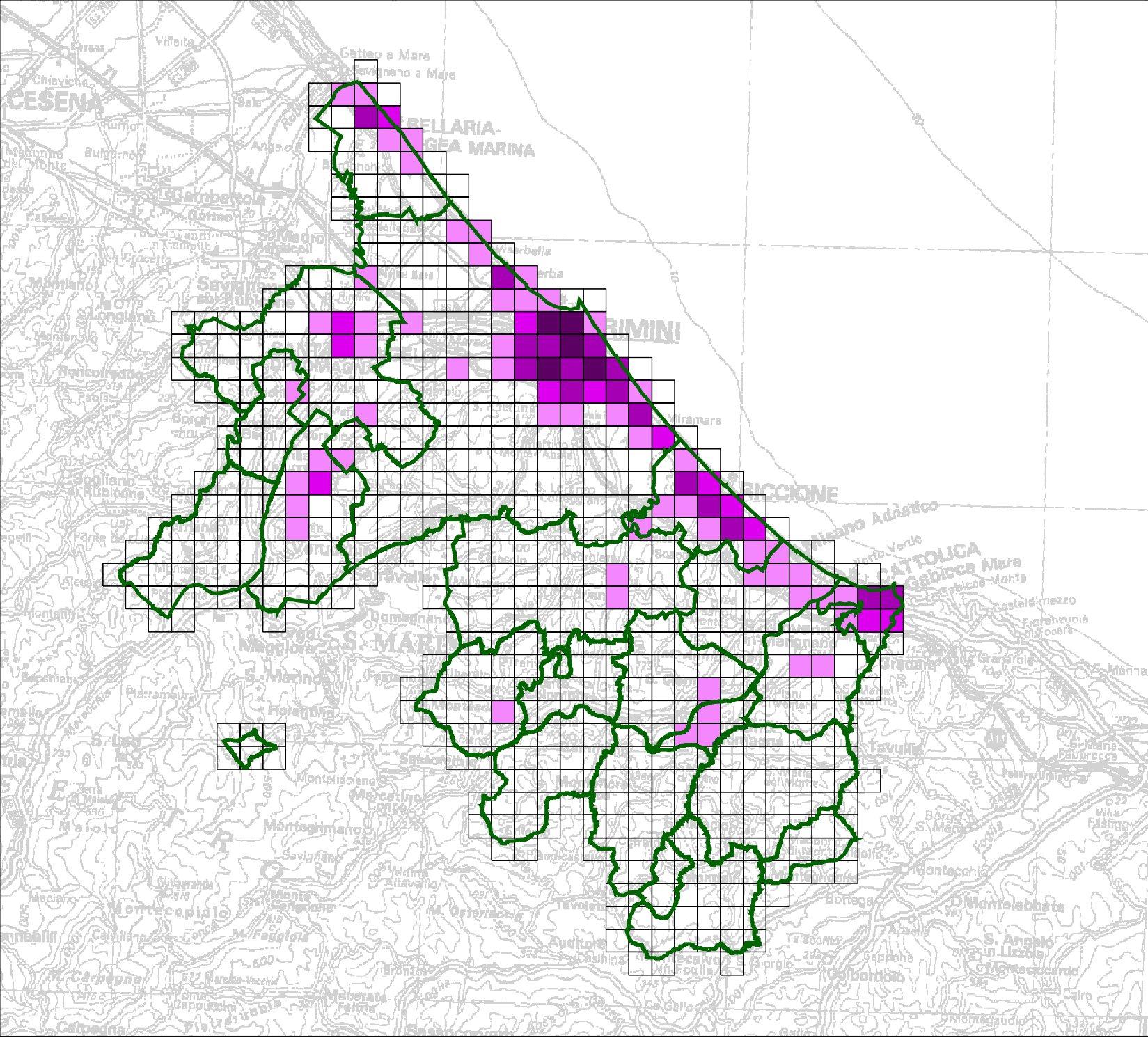
Combustione
non industriale
[t/a]

M 2

M02_PTS

M02_cat.shp	
	0 - 0
	0 - 0.1
	0.1 - 0.2
	0.2 - 0.4
	0.4 - 0.7

2 0 2 chilometri





PROVINCIA
DI RIMINI



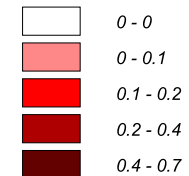
Fig. 7.11.13

Combustione
non industriale
[t/a]

M 2

M02_PM10

M02_cat.shp



2 0 2 chilometri





PROVINCIA
DI RIMINI



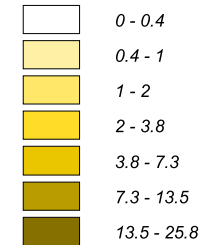
Fig. 7.11.14

Combustione
non industriale
[t/a]

M 2

M02_SOx

M02_cat.shp



2 0 2 chilometri





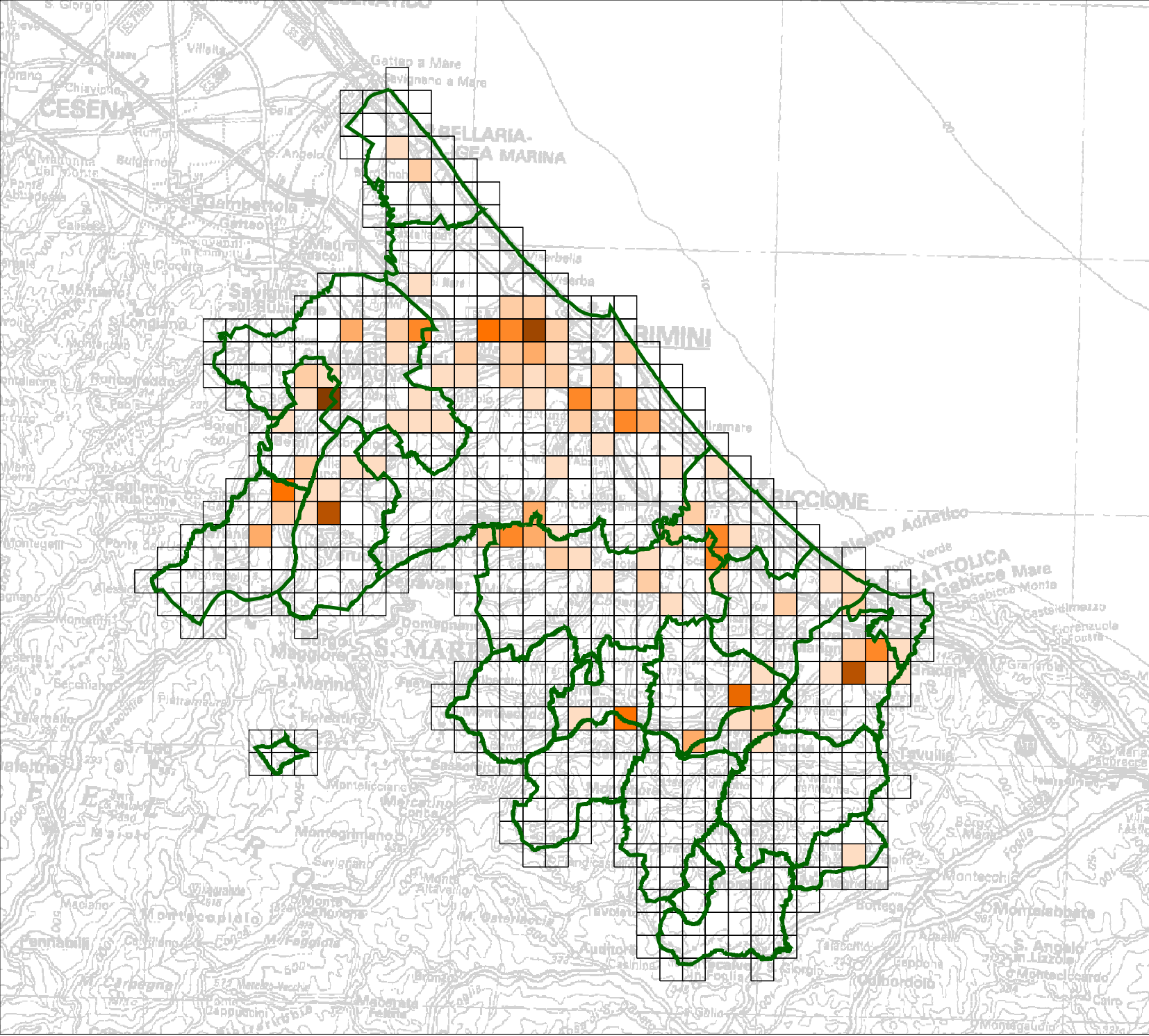
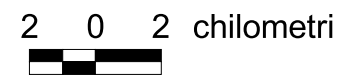
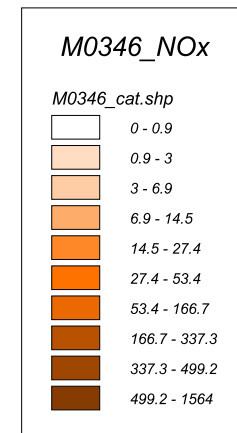
PROVINCIA
DI RIMINI



Fig. 7.11.15

Combustione
industriale
Processi Produttivi
Uso Solventi
[t/a]

M 3-4-6





PROVINCIA
DI RIMINI



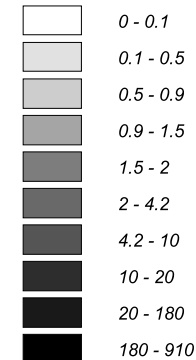
Fig. 7.11.16

Combustione
industriale
Processi Produttivi
Uso Solventi
[t/a]

M 3-4-6

M0346_CO

M0346_cat.shp



2 0 2 chilometri





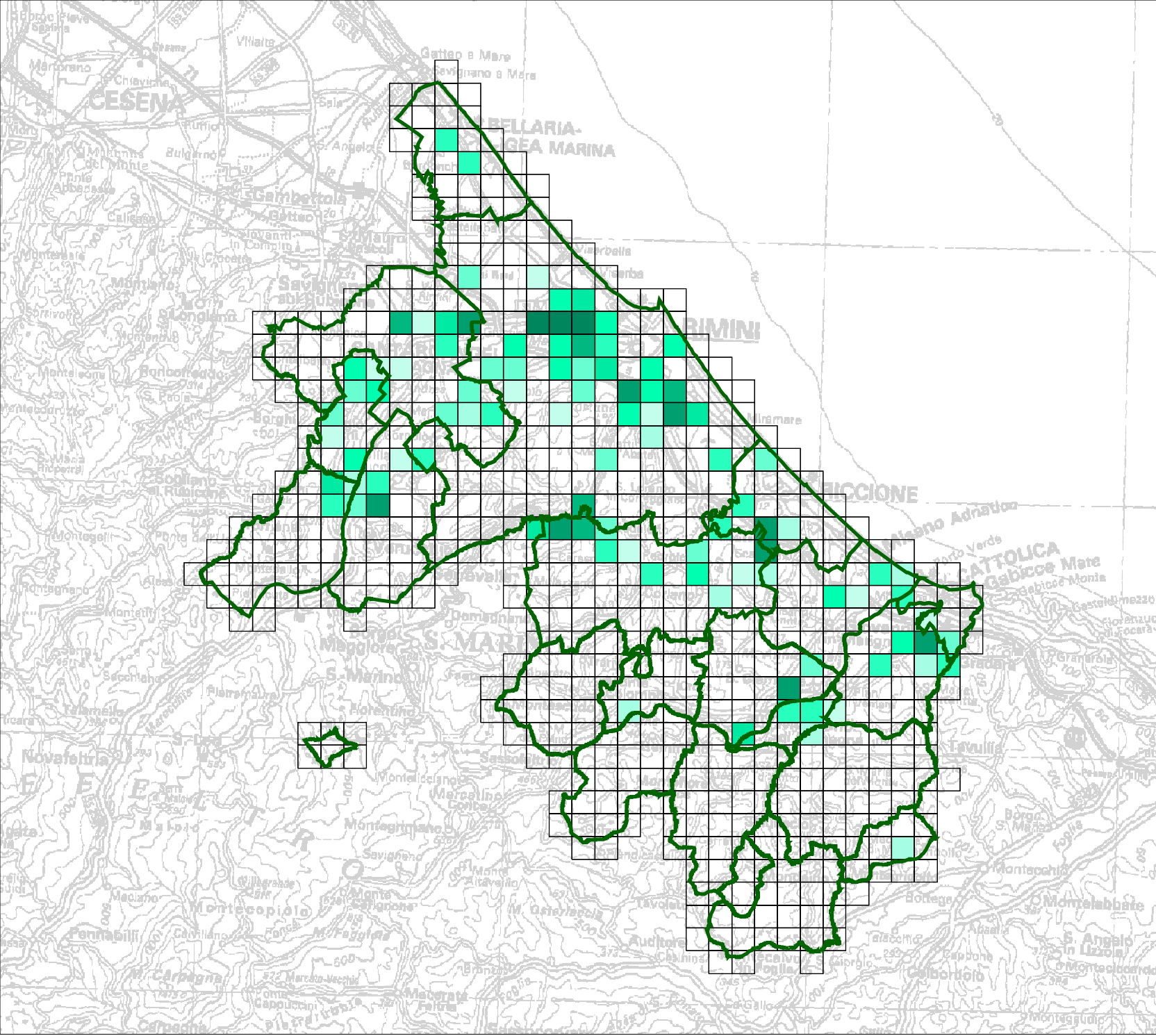
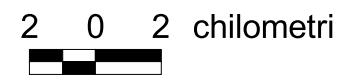
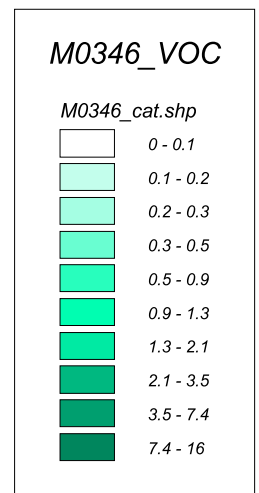
PROVINCIA
DI RIMINI



Fig. 7.11.17

Combustione
industriale
Processi Produttivi
Uso Solventi
[t/a]

M 3-4-6





PROVINCIA
DI RIMINI



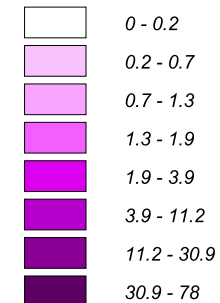
Fig. 7.11.18

Combustione
industriale
Processi Produttivi
Uso Solventi
[t/a]

M 3-4-6

M0346_PTS

M0346_cat.shp



2 0 2 chilometri



PROVINCIA
DI RIMINI



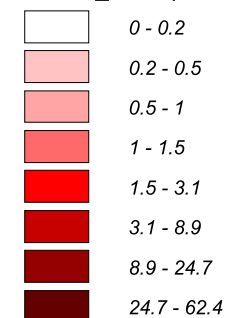
Fig. 7.11.19

Combustione
industriale
Processi Produttivi
Uso Solventi
[t/a]

M 3-4-6

M0346_PM10

M0346_cat.shp



2 0 2 chilometri





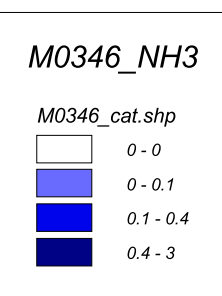
PROVINCIA
DI RIMINI



Fig. 7.11.20

Combustione
industriale
Processi Produttivi
Uso Solventi
[t/a]

M 3-4-6



2 0 2 chilometri



PROVINCIA
DI RIMINI



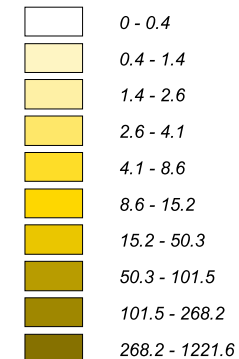
Fig. 7.11.21

Combustione
industriale
Processi Produttivi
Uso Solventi
[t/a]

M 3-4-6

M0346_SOx

M0346_cat.shp



2 0 2 chilometri





PROVINCIA
DI RIMINI



Fig. 7.11.22

Estrazione
Trattamento
Distribuzione
Combustibili

[t/a]

M 5



2 0 2 chilometri



PROVINCIA
DI RIMINI

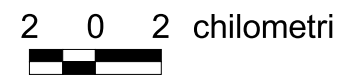
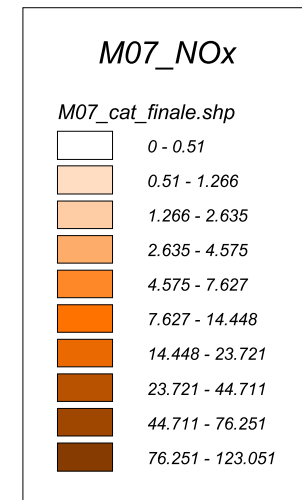


Fig. 7.11.23

Trasporto
su strada

[t/a]

M 7





PROVINCIA
DI RIMINI



Fig. 7.11.24

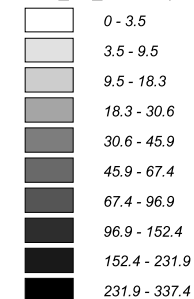
Trasporto
su strada

[t/a]

M 7

M07_CO

M07_cat_finale.shp



2 0 2 chilometri





PROVINCIA
DI RIMINI

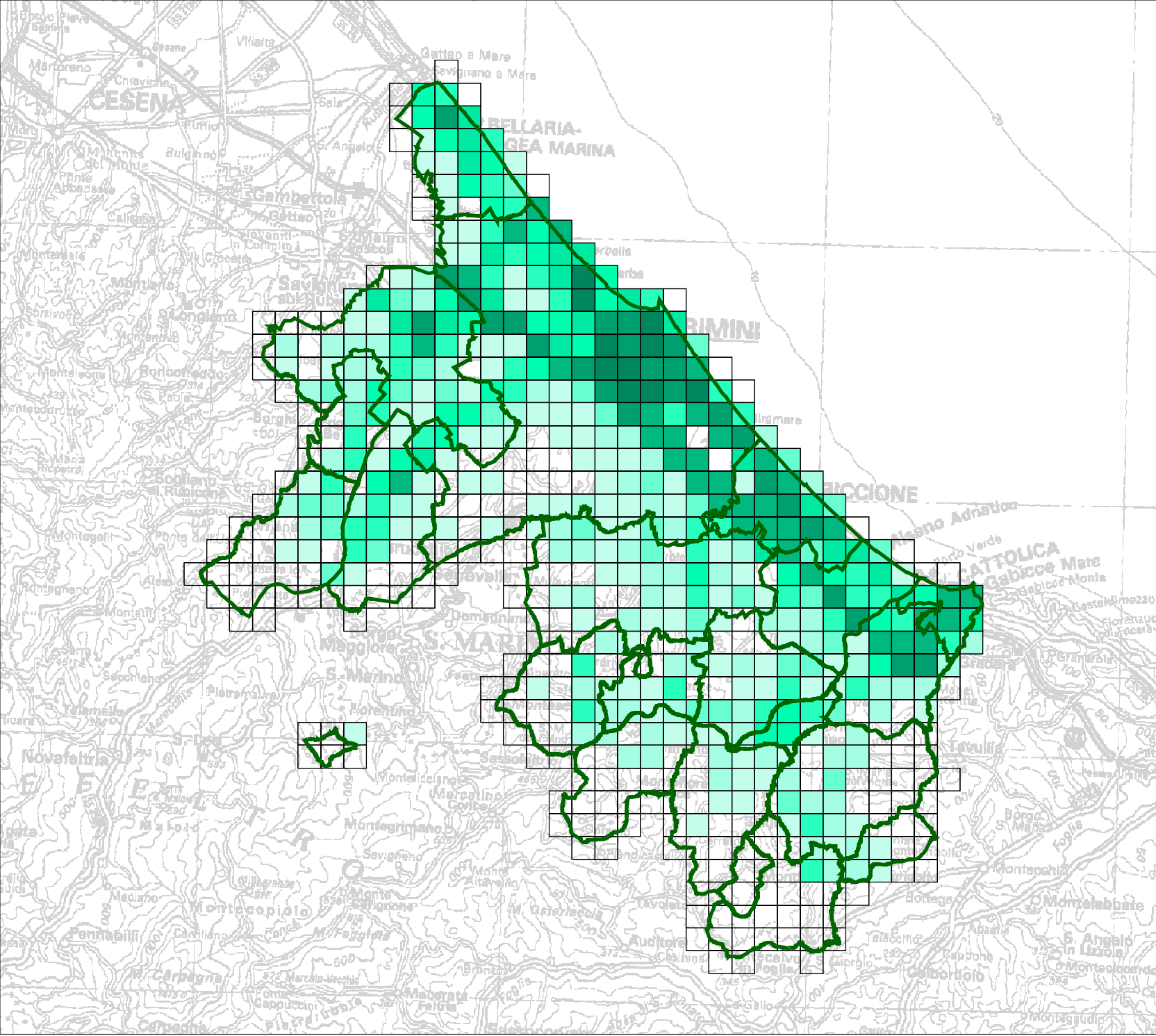
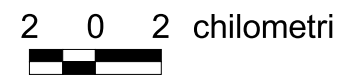
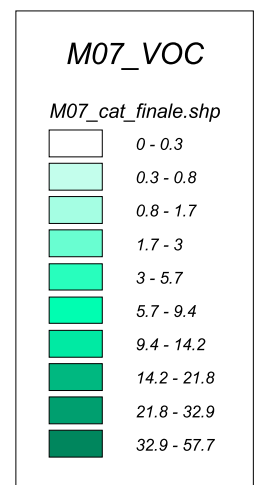


Fig. 7.11.25

Trasporto
su strada

[t/a]

M 7





PROVINCIA
DI RIMINI



Fig. 7.11.26

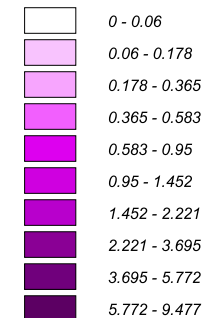
Trasporto
su strada

[t/a]

M 7

M07_PTS

M07_cat_finale.shp



2 0 2 chilometri





PROVINCIA
DI RIMINI



Fig. 7.11.27

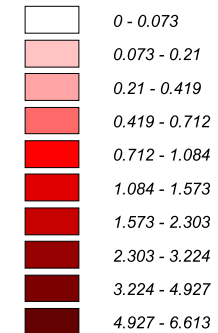
Trasporto
su strada

[t/a]

M 7

M07_PM10

M07_cat_finale.shp



2 0 2 chilometri





PROVINCIA
DI RIMINI



Fig. 7.11.28

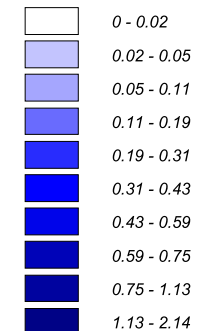
Trasporto
su strada

[t/a]

M 7

M07_NH3

M07_cat_finale.shp



2 0 2 chilometri





PROVINCIA
DI RIMINI



Fig. 7.11.29

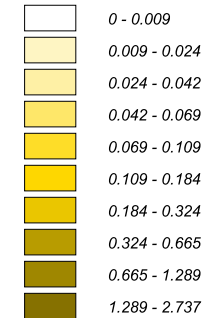
Trasporto
su strada

[t/a]

M 7

M07_SOx

M07_cat_finale.shp



2 0 2 chilometri





PROVINCIA
DI RIMINI



Fig. 7.11.30

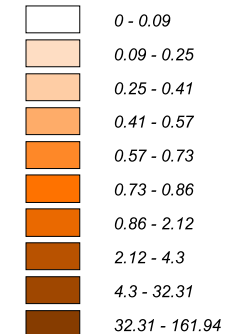
Altre sorgenti
mobili

[t/a]

M 8

M08_NOx

M08_cat.shp



2 0 2 chilometri





PROVINCIA
DI RIMINI



Fig. 7.11.31

Altre sorgenti
mobili

[t/a]

M 8

M08_CO

M08_cat.shp

	0 - 0.04
	0.04 - 0.11
	0.11 - 0.19
	0.19 - 0.26
	0.26 - 0.33
	0.33 - 0.39
	0.39 - 0.59
	0.59 - 2.85
	2.85 - 560.25
	560.25 - 2803.86

2 0 2 chilometri





PROVINCIA
DI RIMINI



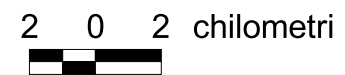
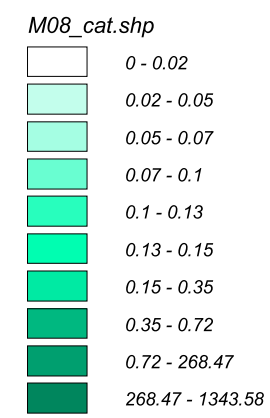
Fig. 7.11.32

Altre sorgenti
mobili

[t/a]

M 8

M08_VOC





PROVINCIA
DI RIMINI



Fig. 7.11.33

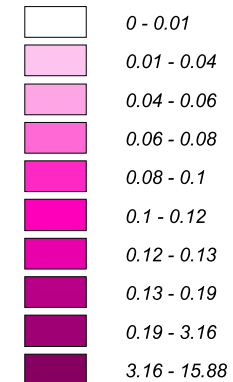
Altre sorgenti
mobili

[t/a]

M 8

M08_PTS

M08_cat.shp



2 0 2 chilometri





PROVINCIA
DI RIMINI



Fig. 7.11.34

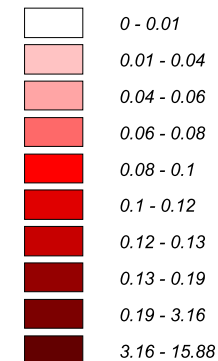
Altre sorgenti
mobili

[t/a]

M 8

M08_PM10

M08_cat.shp



2 0 2 chilometri





PROVINCIA
DI RIMINI



Fig. 7.11.35

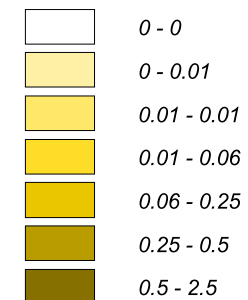
Altre sorgenti
mobili

[t/a]

M 8

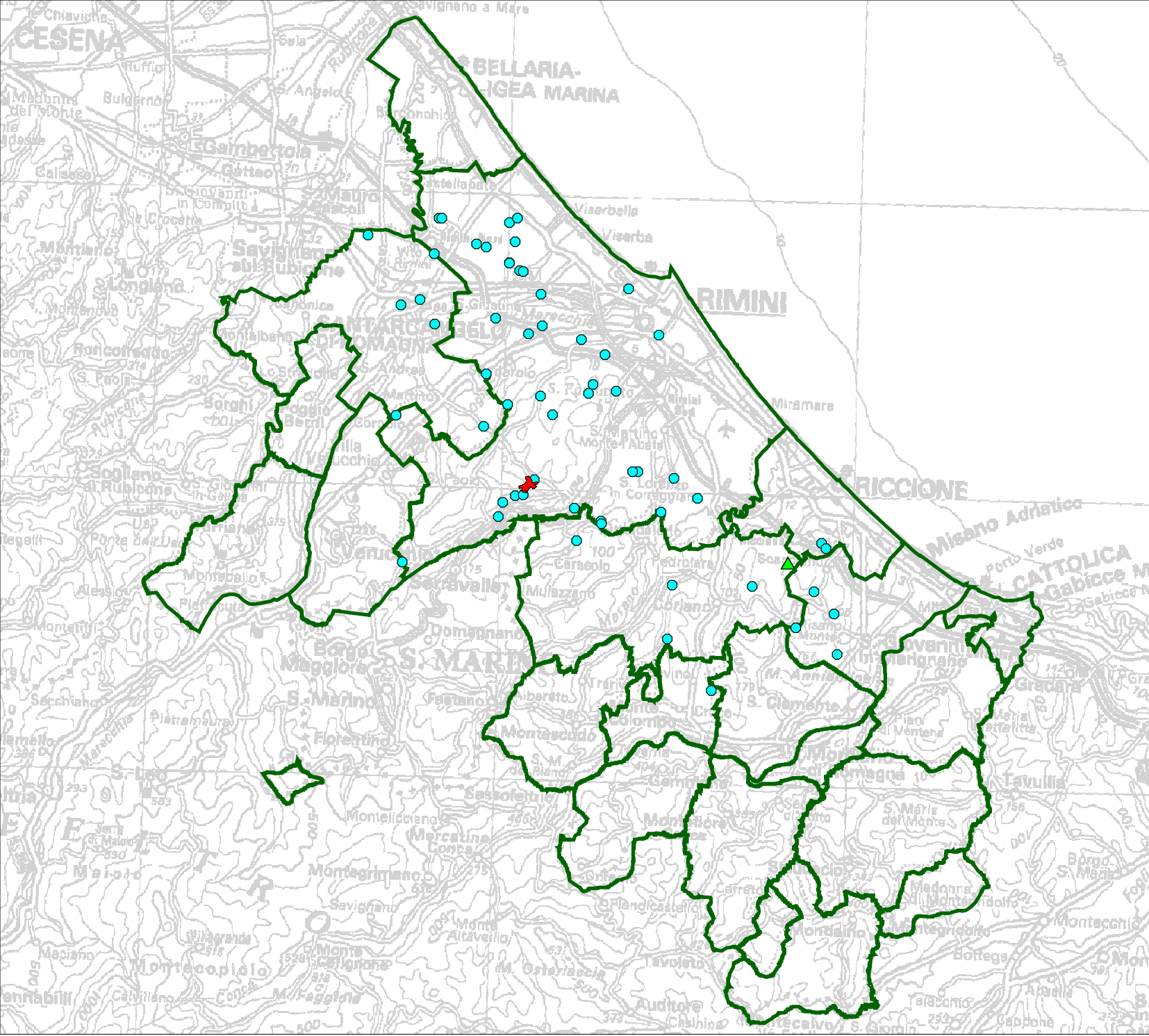
M08_SOx

M08_cat.shp



2 0 2 chilometri





PROVINCIA
DI RIMINI



Fig. 7.11.36

Trattamento
Rifiuti
[t/a]

M 9

NOx = 119
CO = 3,5
VOC = 3,8
PTS = 1,9
PM10 = 1,4
SOx = 1,8

M09



Baldacci_area.shp



Fanghitot.shp



Inceneritore.shp

2 0 2 chilometri



PROVINCIA
DI RIMINI

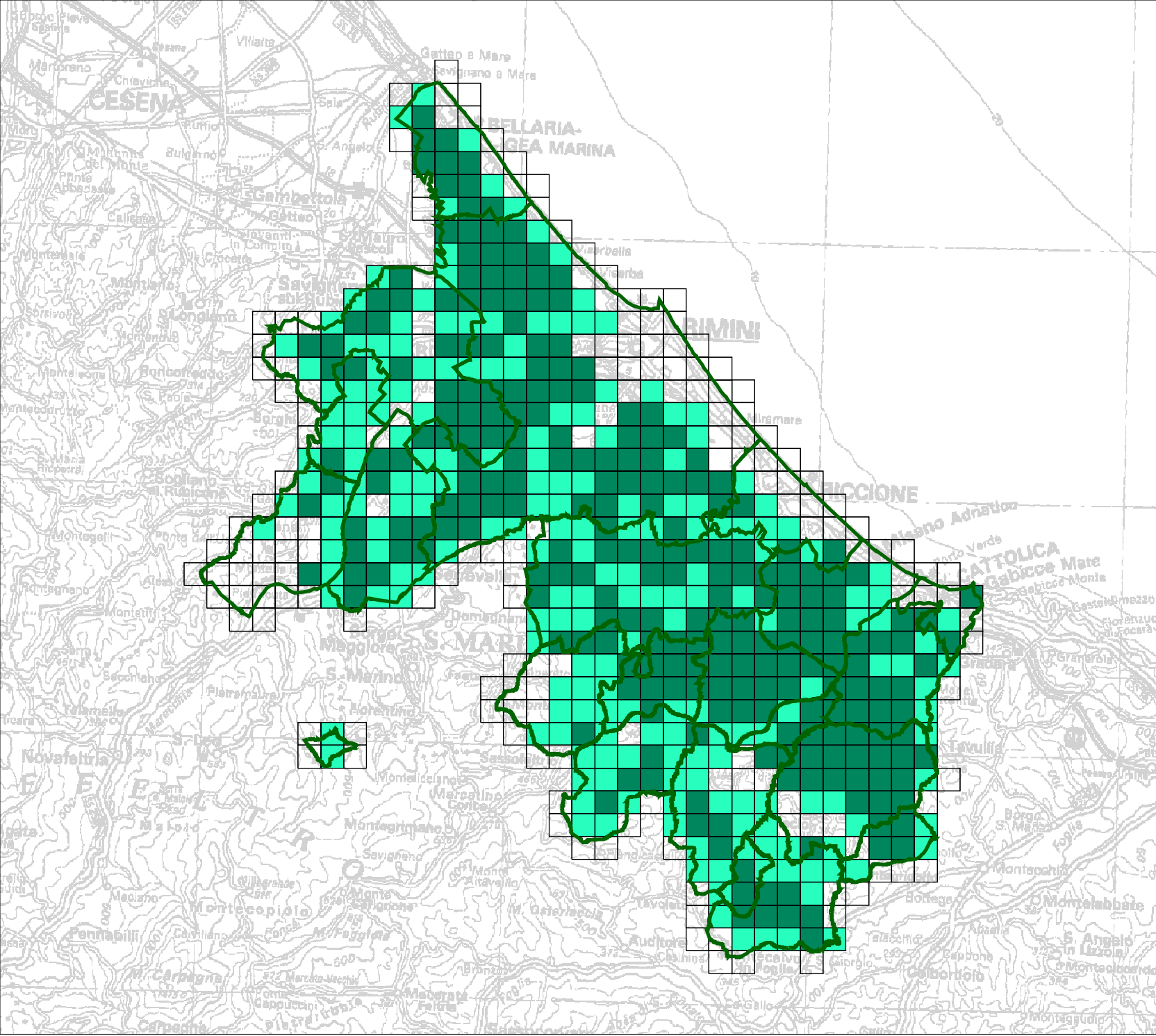
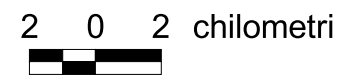
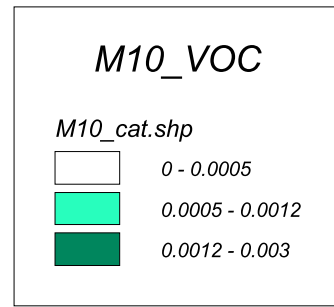


Fig. 7.11.37

Attività
Agricole

[t/a]

M 10





PROVINCIA
DI RIMINI



Fig. 7.11.38

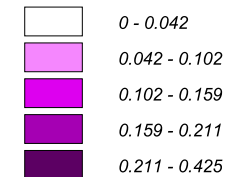
Attività
Agricole

[t/a]

M 10

M10_PTS

M10_cat.shp



2 0 2 chilometri





PROVINCIA
DI RIMINI



Fig. 7.11.39

Attività
Agricole

[t/a]

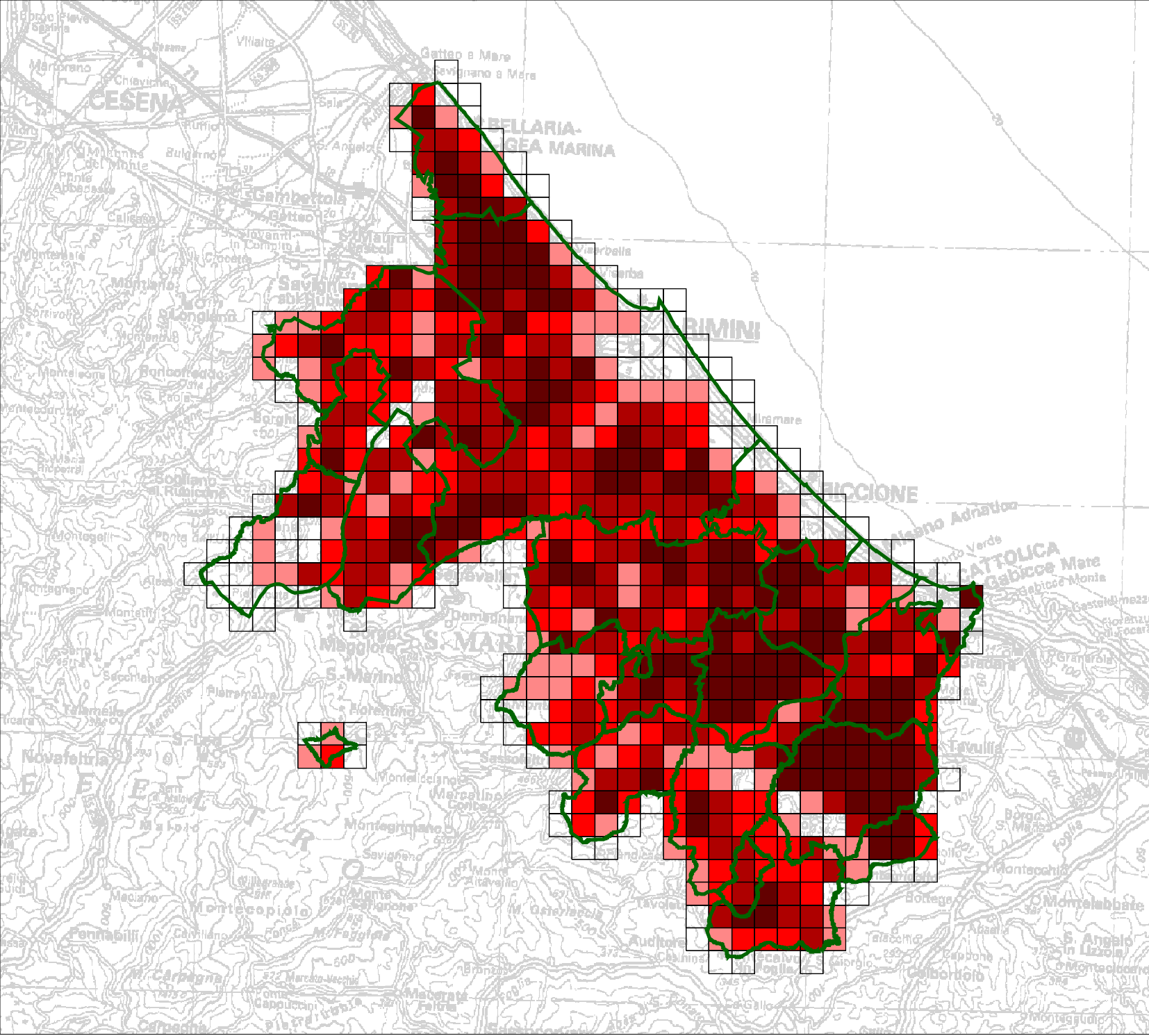
M 10

M10_PM10

M10_cat.shp

	0 - 0.028
	0.028 - 0.068
	0.068 - 0.105
	0.105 - 0.14
	0.14 - 0.283

2 0 2 chilometri





PROVINCIA
DI RIMINI

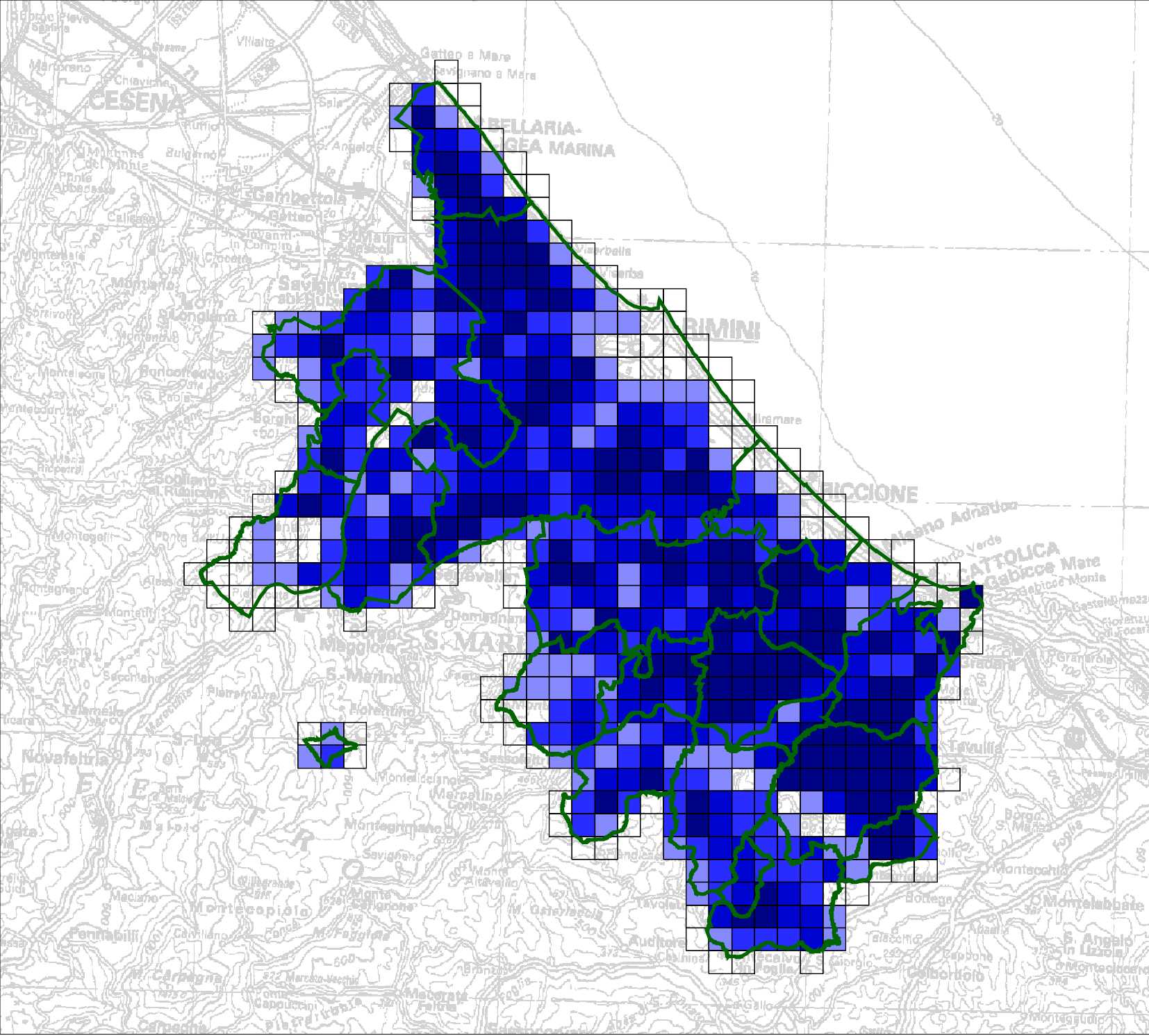
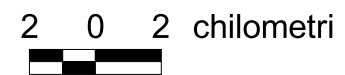
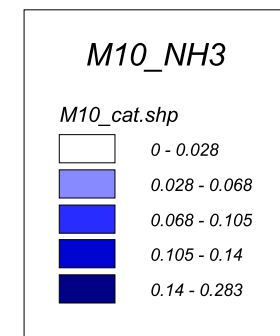


Fig. 7.11.40

Attività
Agricole

[t/a]

M 10



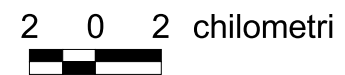
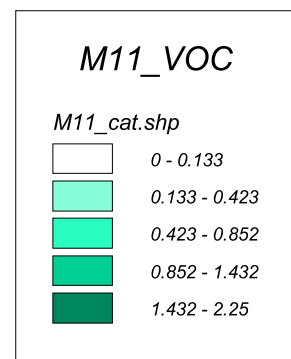


PROVINCIA
DI RIMINI



Fig. 7.11.41

Altre
Sorgenti
[t/a]
M 11





PROVINCIA
DI RIMINI



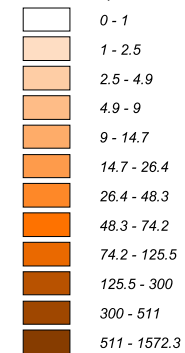
Fig. 7.11.42

TOTALI
Provincia RN

[t/a]

TOT_NOx.shp

Totaloni.shp



2 0 2 chilometri





PROVINCIA
DI RIMINI

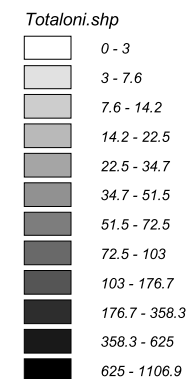


Fig. 7.11.43

TOTALI
Provincia RN

[t/a]

TOT_CO.shp



2 0 2 chilometri





PROVINCIA
DI RIMINI



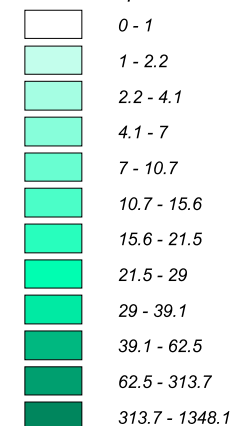
Fig. 7.11.44

TOTALI
Provincia RN

[t/a]

TOT_VOC.shp

Totaloni.shp



2 0 2 chilometri





PROVINCIA
DI RIMINI



arpa
14.000
regione emilia-romagna
protezione ambientale
www.arpa.emr.it

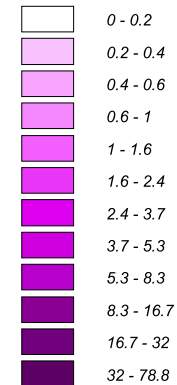
Fig. 7.11.45

TOTALI
Provincia RN

[t/a]

TOT_PTS.shp

Totaloni.shp



2 0 2 chilometri



PROVINCIA
DI RIMINI



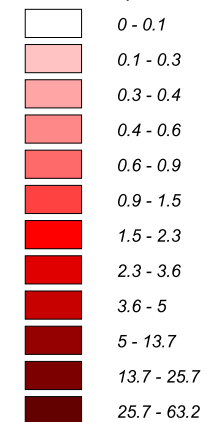
Fig. 7.11.46

TOTALI
Provincia RN

[t/a]

TOT_PM10.shp

Totaloni.shp



2 0 2 chilometri





PROVINCIA
DI RIMINI



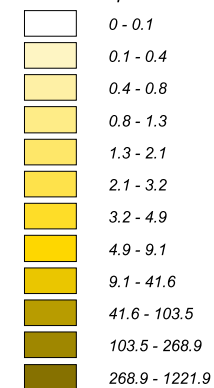
Fig. 7.11.47

TOTALI
Provincia RN

[t/a]

TOT_SOx.shp

Totaloni.shp

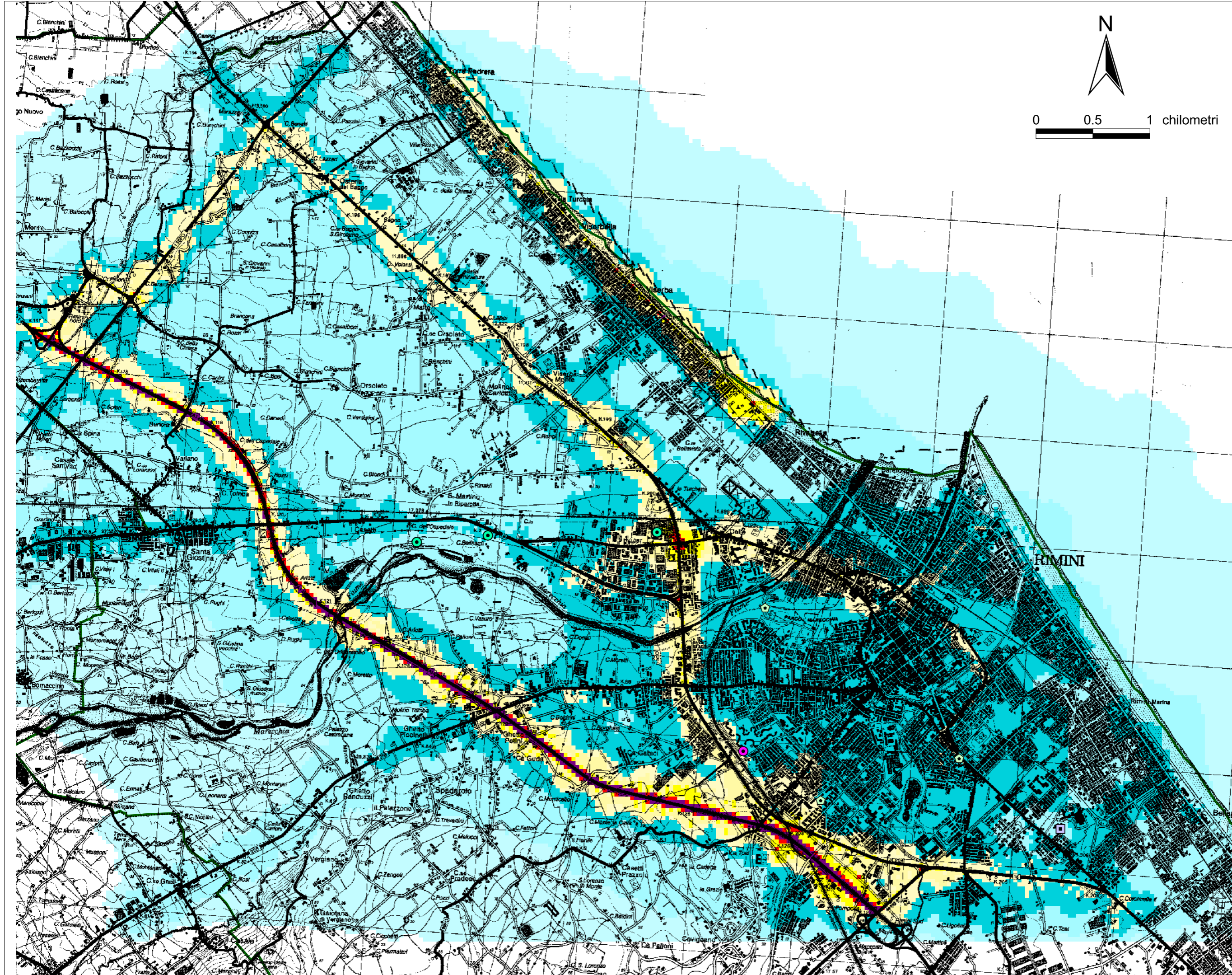


2 0 2 chilometri

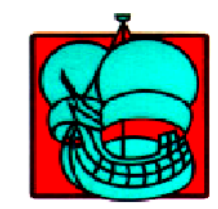




**Mappe delle simulazioni delle
concentrazioni degli inquinanti in atmosfera**



0 0.5 1 chilometri



PROVINCIA DI RIMINI



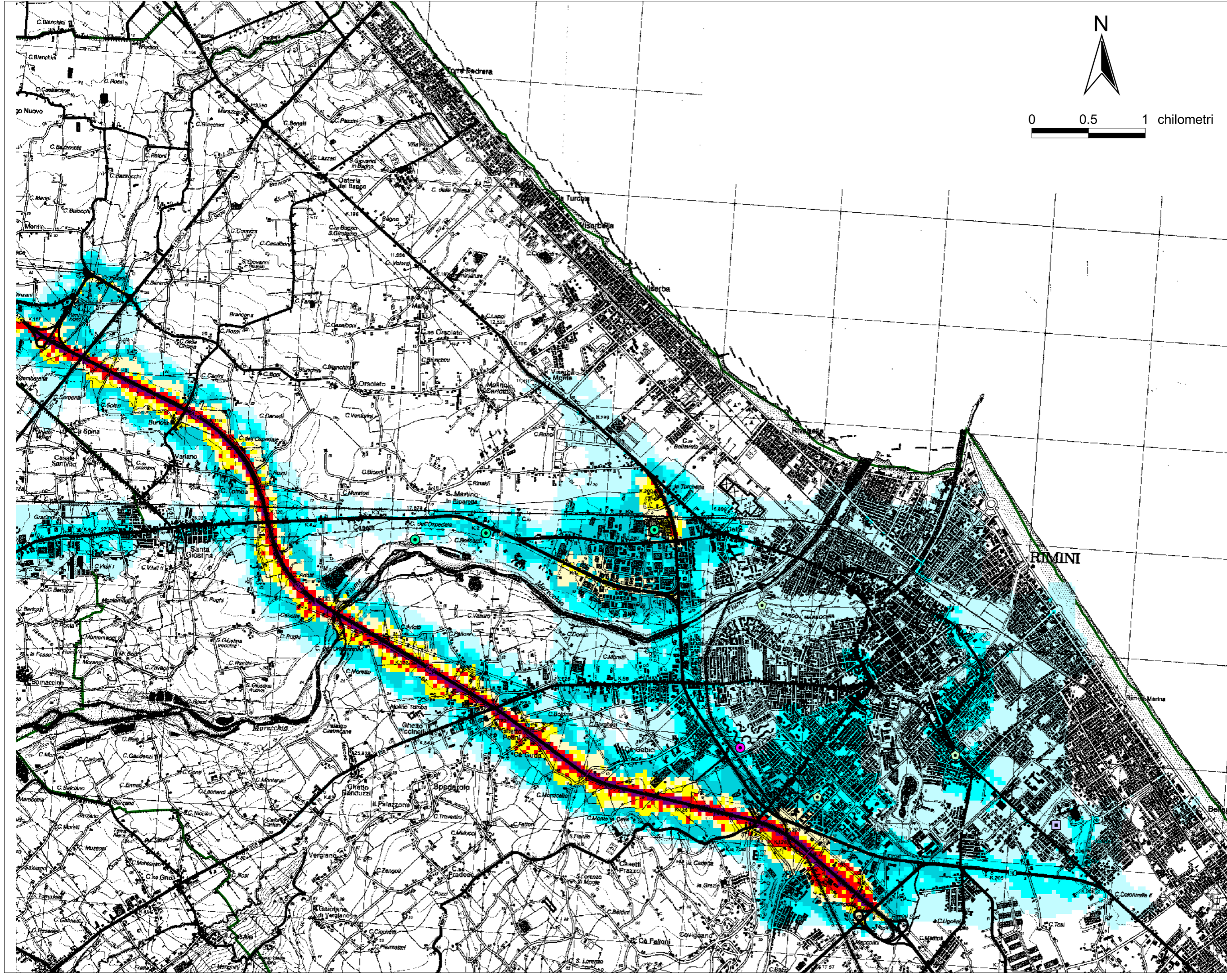
NO2-2003

Media annua dei valori orari [ug/m³]

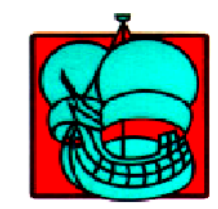
[ug/m³]

- 0 - 15
- 15 - 20
- 20 - 30
- 30 - 40
- 40 - 45
- 45 - 50
- 50 - 55
- 55 - 60
- 60 - 80
- Nessun dato

- M1-Punt.
- M2-Punt.
- M3-4-6-Punt.
- Stazioni RQA



0 0.5 1 chilometri



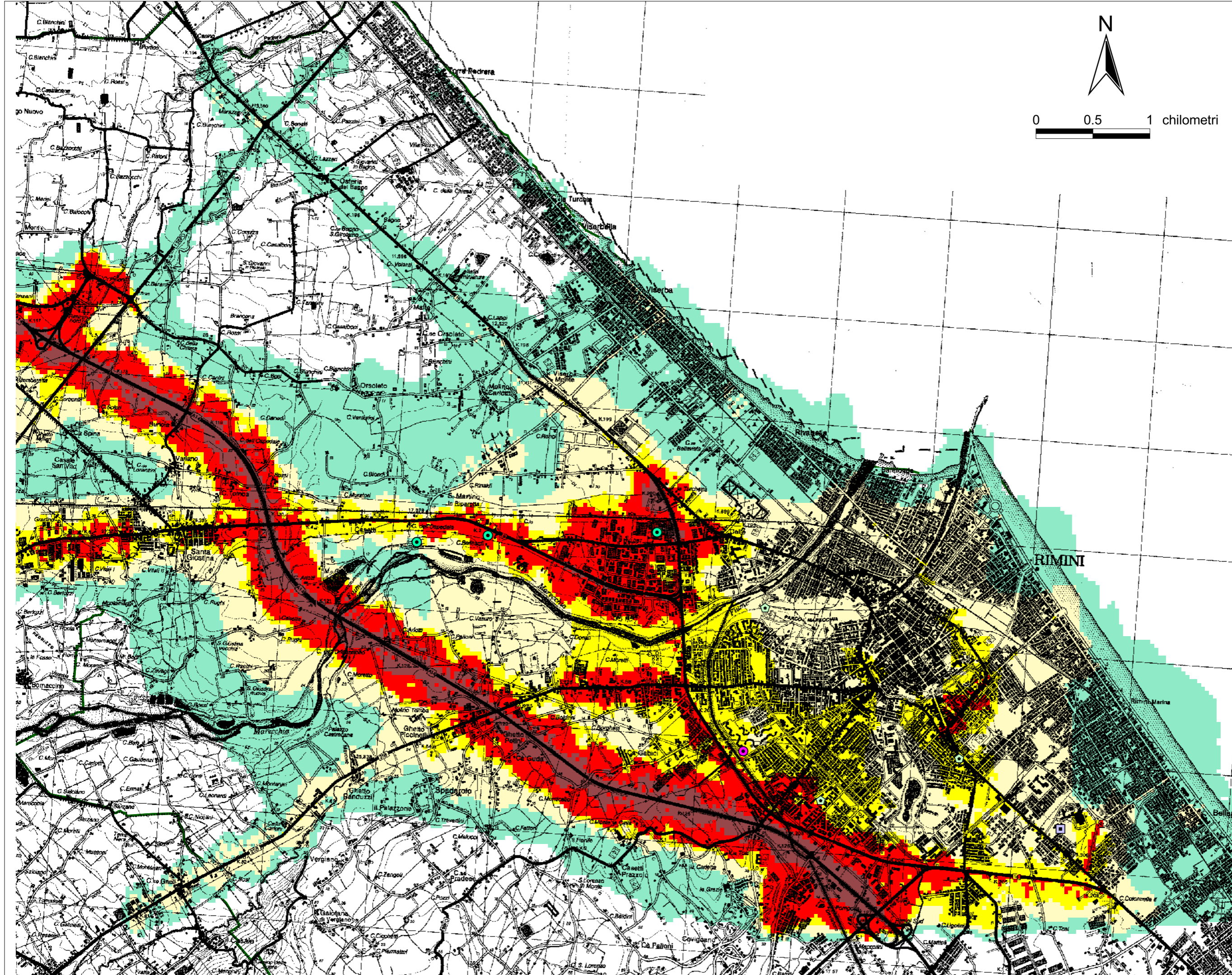
PROVINCIA DI RIMINI



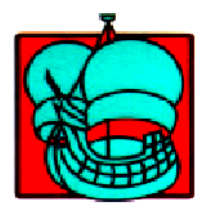
PM10-2003

Media annua dei valori giornalieri [µg/m³]

- | | |
|--|--------------|
| | 33 - 36 |
| | 36 - 37 |
| | 37 - 38 |
| | 38 - 40 |
| | 40 - 41.6 |
| | 41.6 - 43.2 |
| | 43.2 - 50 |
| | 50 - 60 |
| | Nessun dato |
| | M1-Punt. |
| | M2-Punt. |
| | M3-4-6-Punt. |
| | Stazioni RQA |



0 0.5 1 chilometri



PROVINCIA DI RIMINI

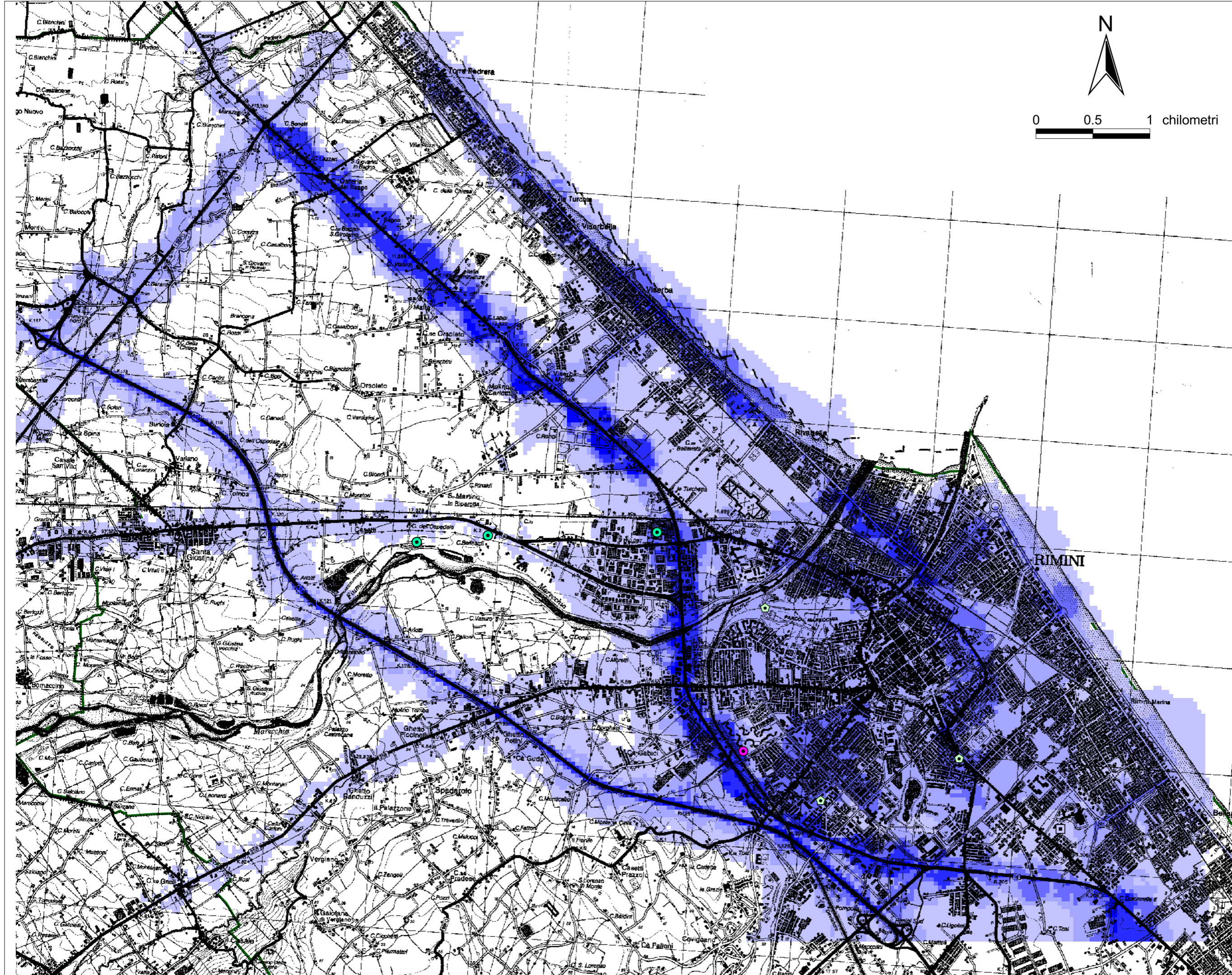


PM10 - 2003
90,41° Perc.

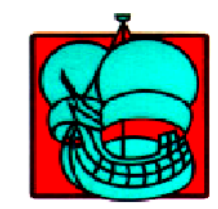
Percentili
dei valori giornalieri
[ug/m³]

	55 - 57
	57 - 58
	58 - 59
	59 - 60
	60 - 65
	65 - 85
	Nessun dato

	M1-Punt.
	M2-Punt.
	M3-4-6-Punt.
	Stazioni RQA



0 0.5 1 chilometri



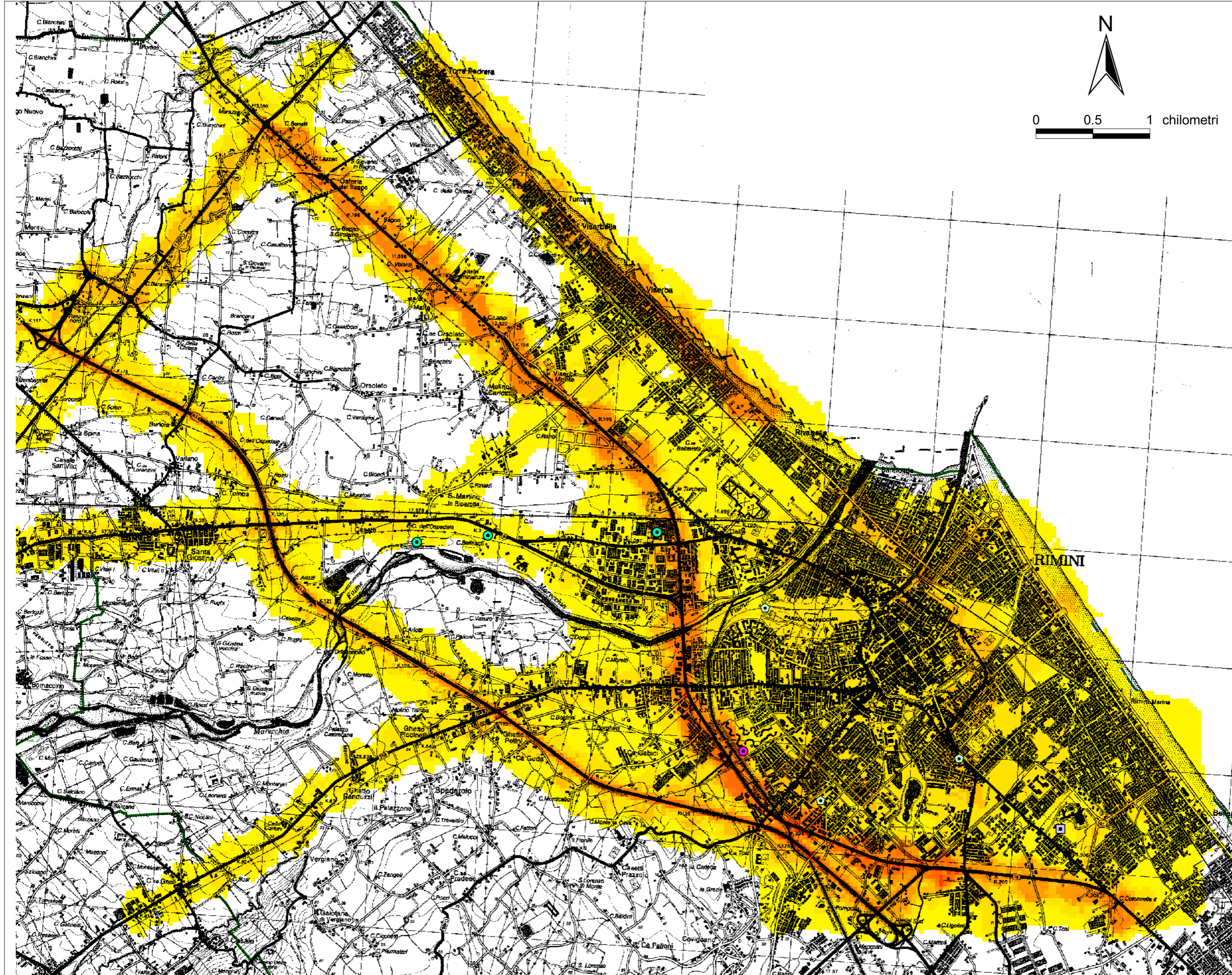
PROVINCIA
DI RIMINI



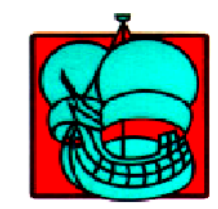
CO-2003

Media annua
dei valori orari
[mg/m³]

- | | |
|--|---------------|
| | 0.307 - 0.374 |
| | 0.374 - 0.442 |
| | 0.442 - 0.509 |
| | 0.509 - 0.576 |
| | 0.576 - 0.644 |
| | 0.644 - 0.711 |
| | 0.711 - 0.779 |
| | 0.779 - 0.846 |
| | 0.846 - 0.913 |
| | 0.913 - 1.5 |
| | M1-Punt. |
| | M2-Punt. |
| | M3-4-6-Punt. |
| | Stazioni RQA |



0 0.5 1 chilometri



PROVINCIA DI RIMINI

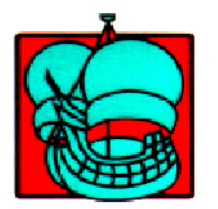
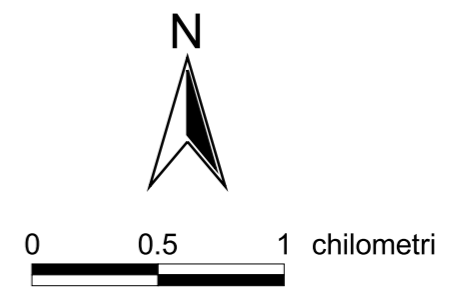
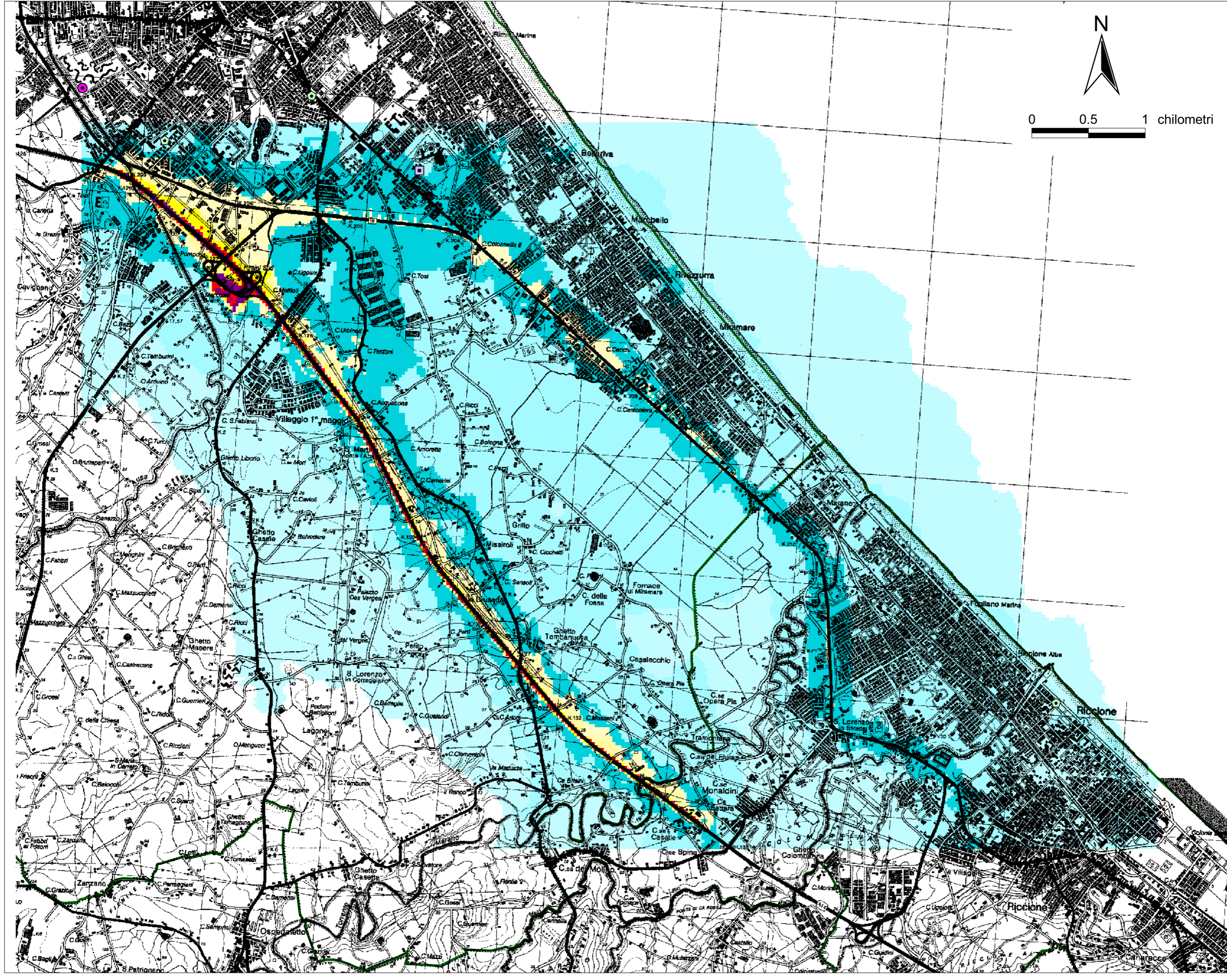


VOC - 2003

Media annua dei valori orari [ug/m³]

VOC_ug_m³

- 1 - 13
- 13 - 25
- 25 - 37
- 37 - 49
- 49 - 60
- 60 - 73
- 73 - 85
- 85 - 97
- 97-110
- > 110
- Nessun dato
- M3-4-6-Punt.



PROVINCIA
DI RIMINI

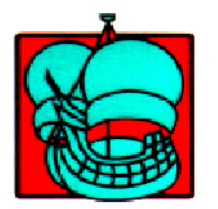
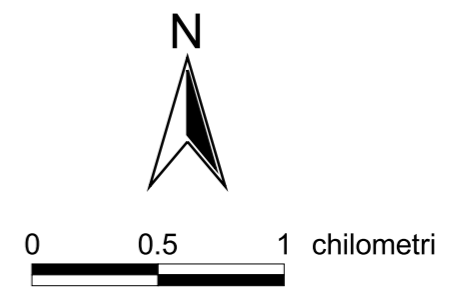
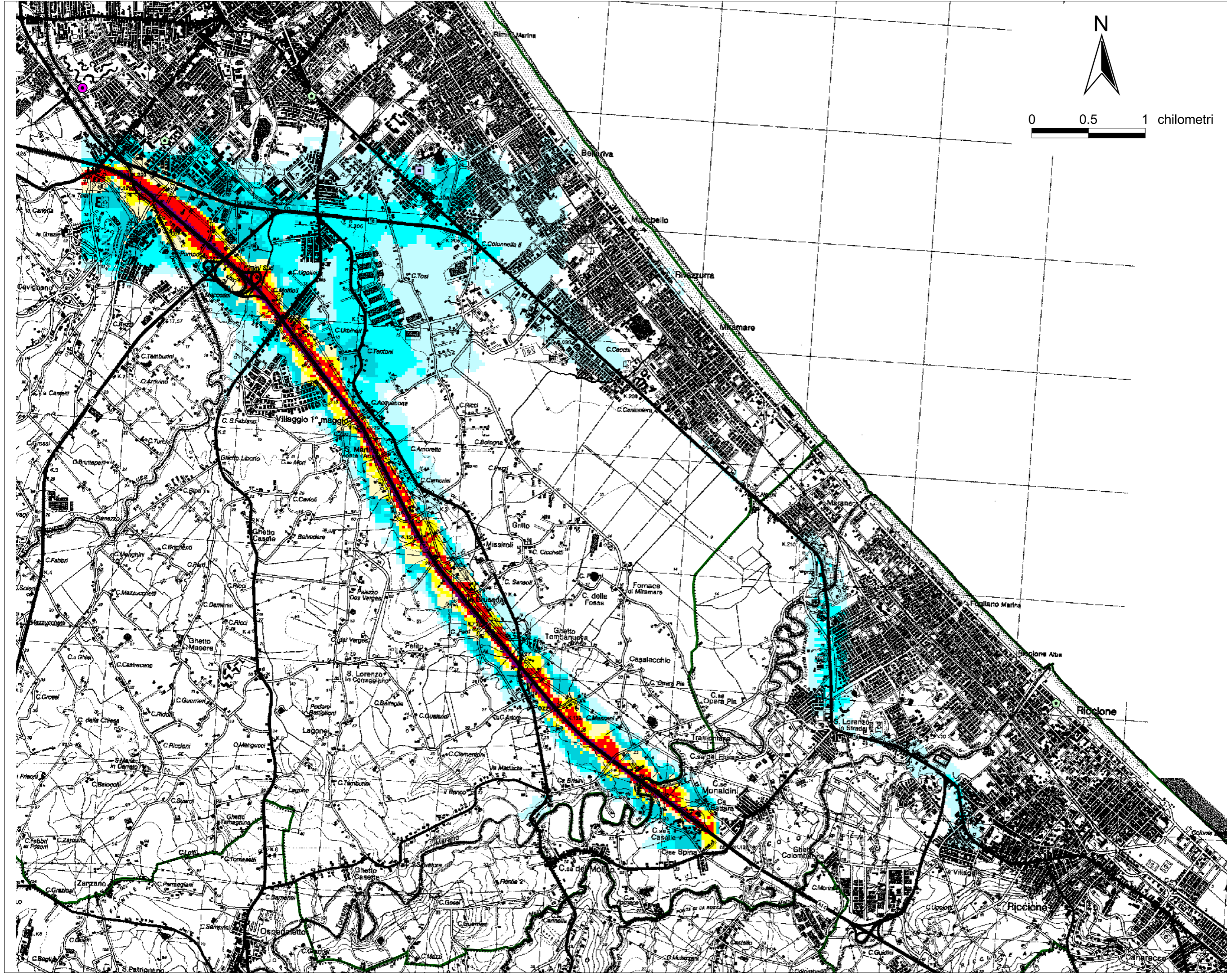


NO2-2003
Media annua
dei valori orari
[ug/m³]

[ug/m³]

	0 - 15
	15 - 20
	20 - 30
	30 - 40
	40 - 45
	45 - 50
	50 - 55
	55 - 60
	60 - 80
	Nessun dato

- M1-Punt.
- M2-Punt.
- M3-4-6-Punt.
- Stazioni RQA

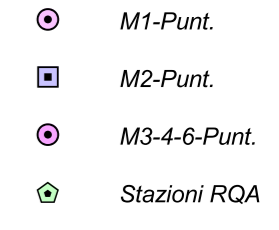
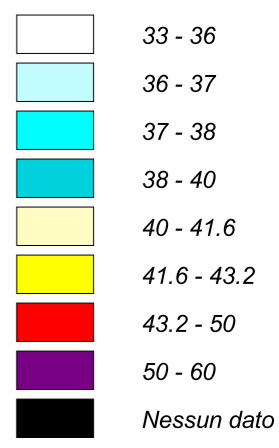


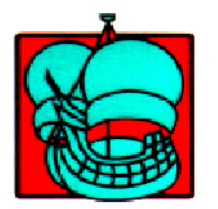
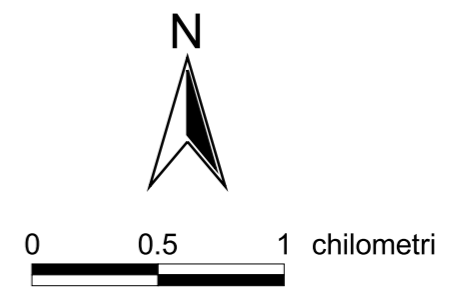
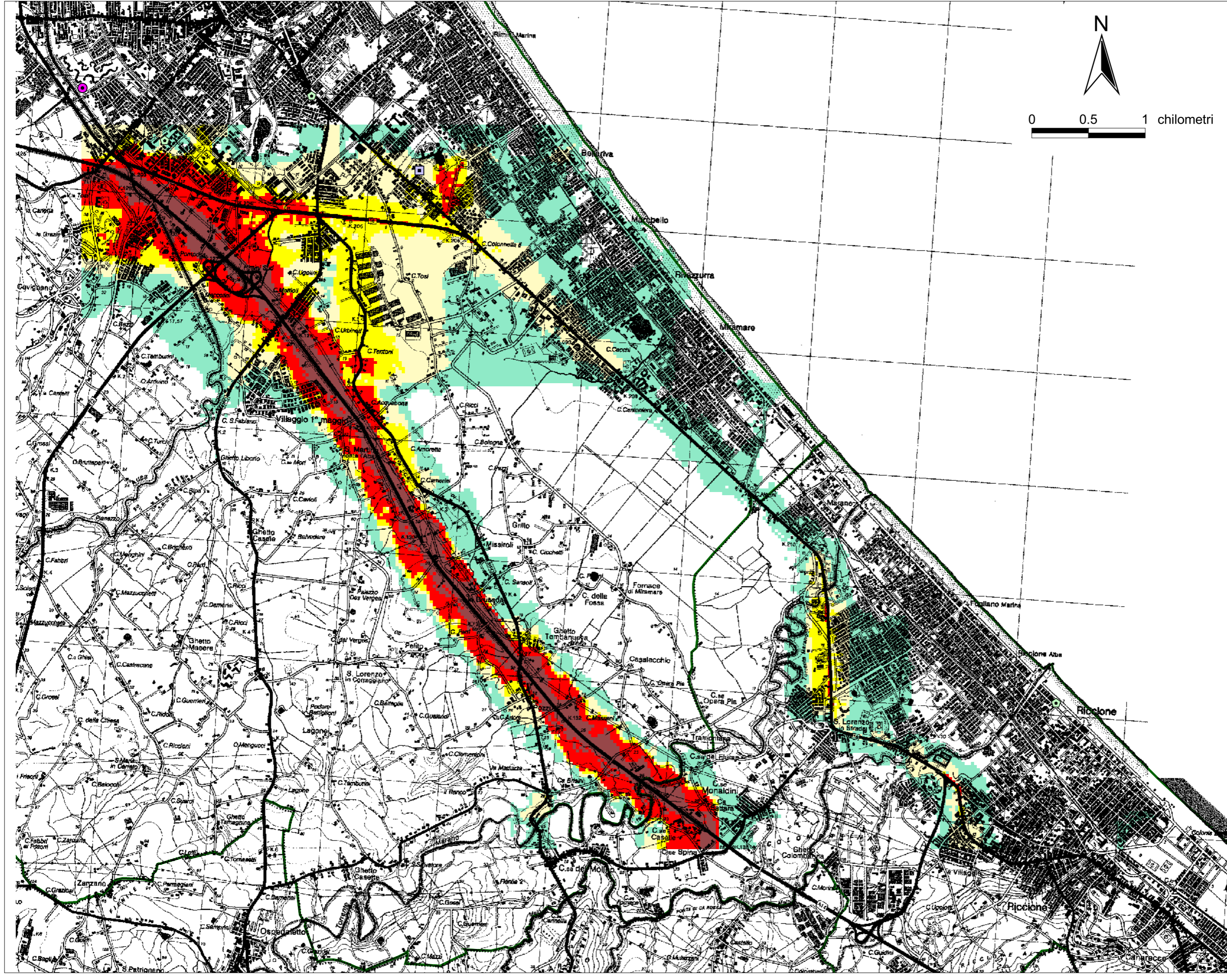
PROVINCIA
DI RIMINI



PM10-2003

Media annua
dei valori giornalieri
[ug/m³]





PROVINCIA
DI RIMINI

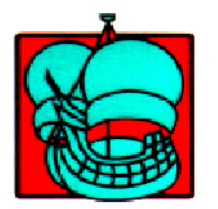
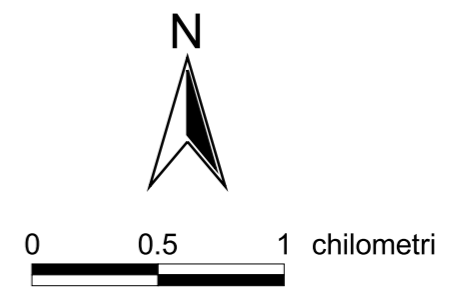
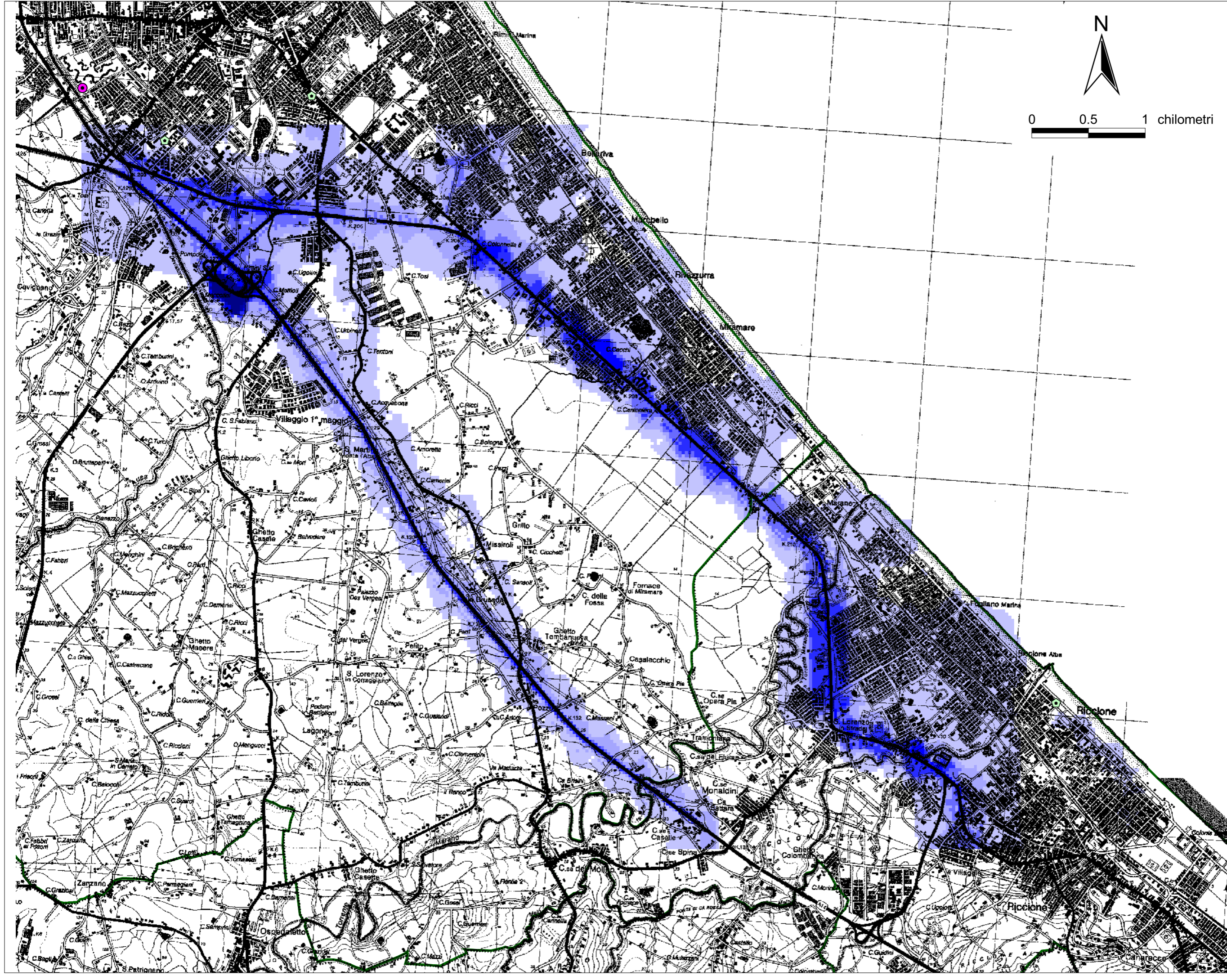


PM10 - 2003
90,41° Perc.

Percentili
dei valori giornalieri
[ug/m³]

	55 - 57
	57 - 58
	58 - 59
	59 - 60
	60 - 65
	65 - 85
	Nessun dato

- M1-Punt.
- M2-Punt.
- M3-4-6-Punt.
- ◇ Stazioni RQA



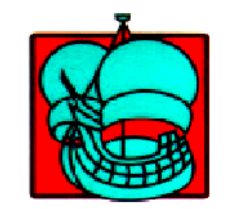
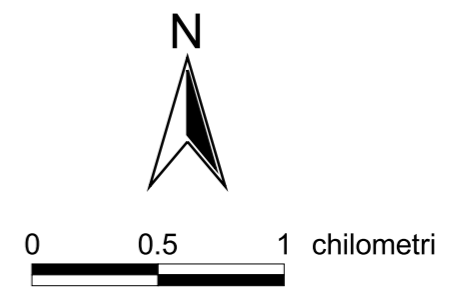
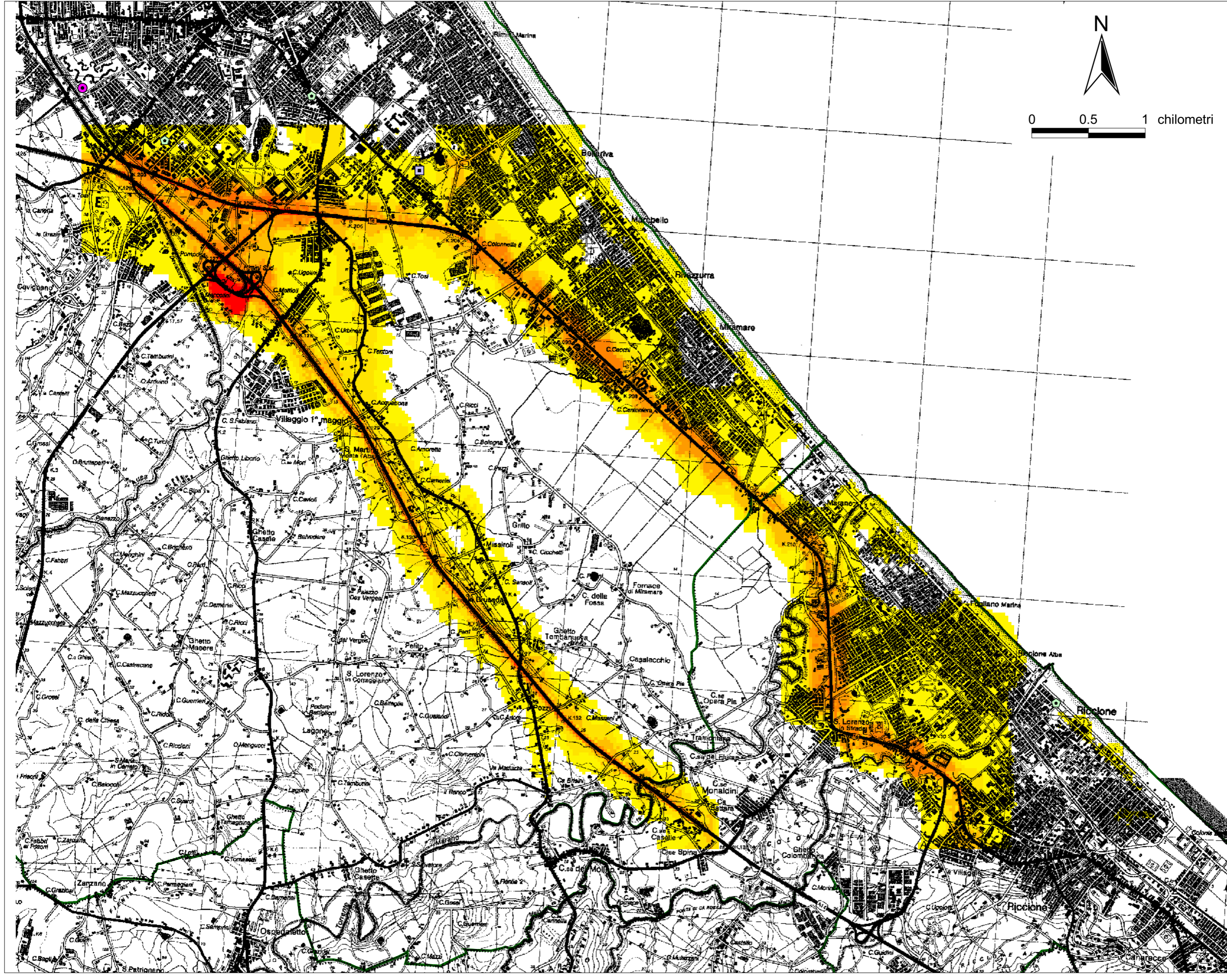
PROVINCIA
DI RIMINI



CO-2003

Media annua
dei valori orari
[mg/m³]

- | | |
|--|---------------|
| | 0.307 - 0.374 |
| | 0.374 - 0.442 |
| | 0.442 - 0.509 |
| | 0.509 - 0.576 |
| | 0.576 - 0.644 |
| | 0.644 - 0.711 |
| | 0.711 - 0.779 |
| | 0.779 - 0.846 |
| | 0.846 - 0.913 |
| | 0.913 - 1.5 |
| | Nessun dato |
| | M1-Punt. |
| | M2-Punt. |
| | M3-4-6-Punt. |
| | Stazioni RQA |

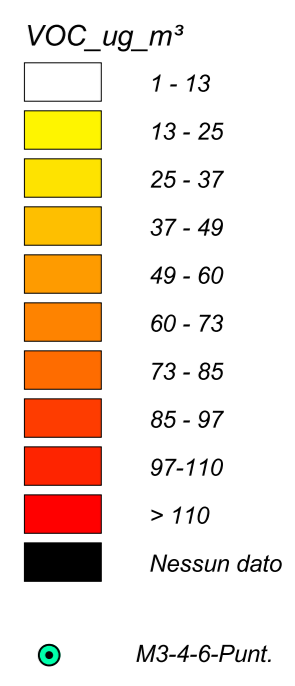


PROVINCIA
DI RIMINI



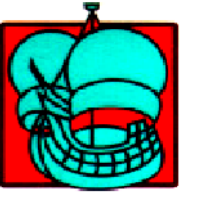
VOC - 2003

Media annua
dei valori orari
[ug/m³]





0 0.5 1 chilometri



PROVINCIA DI RIMINI




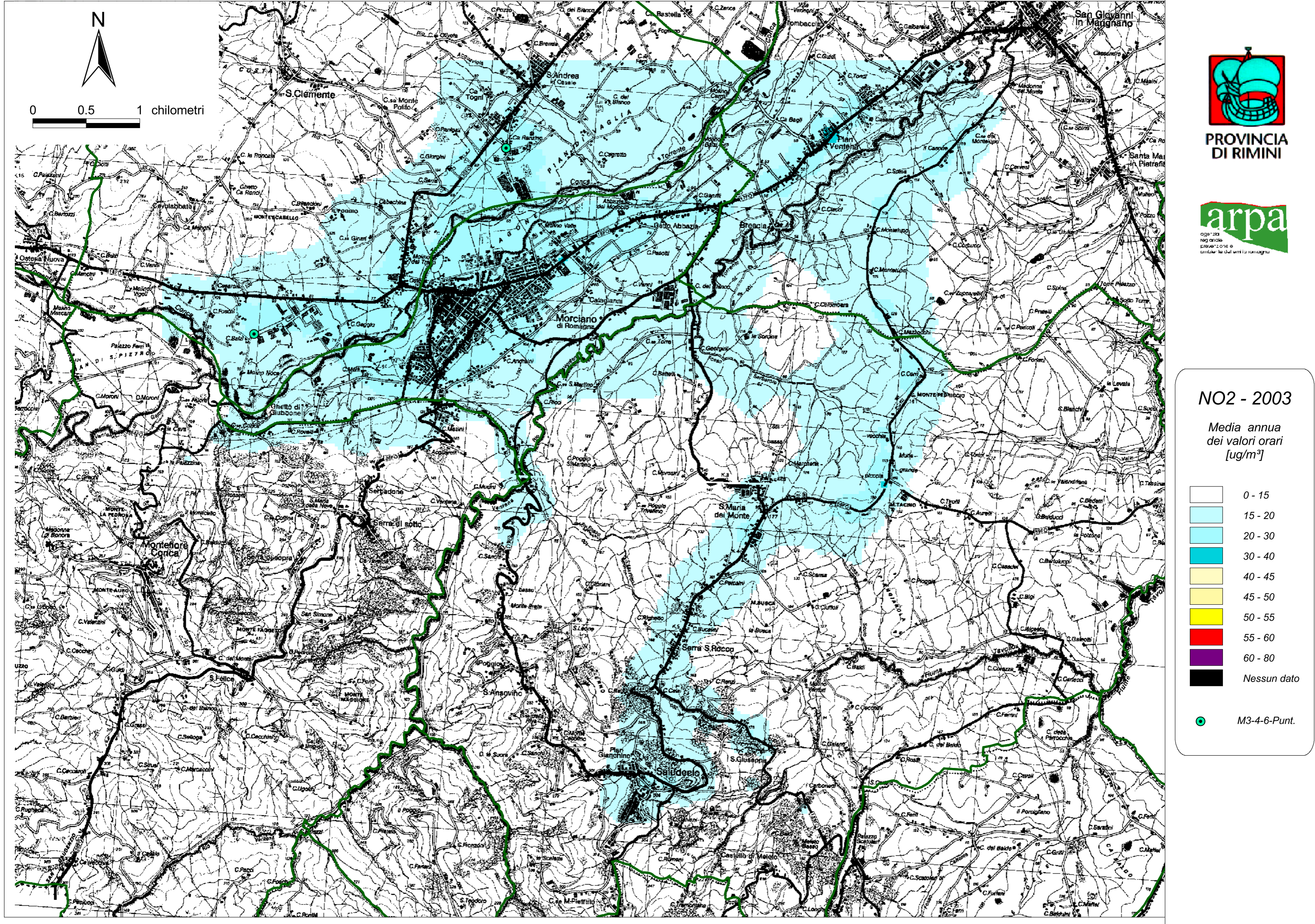
agenzia regionale
protezione e
controllo dell'ambiente

NO2 - 2003

Media annua
dei valori orari
[$\mu\text{g}/\text{m}^3$]

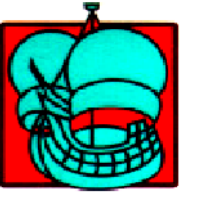


 M3-4-6-Punt.





0 0.5 1 chilometri



PROVINCIA DI RIMINI

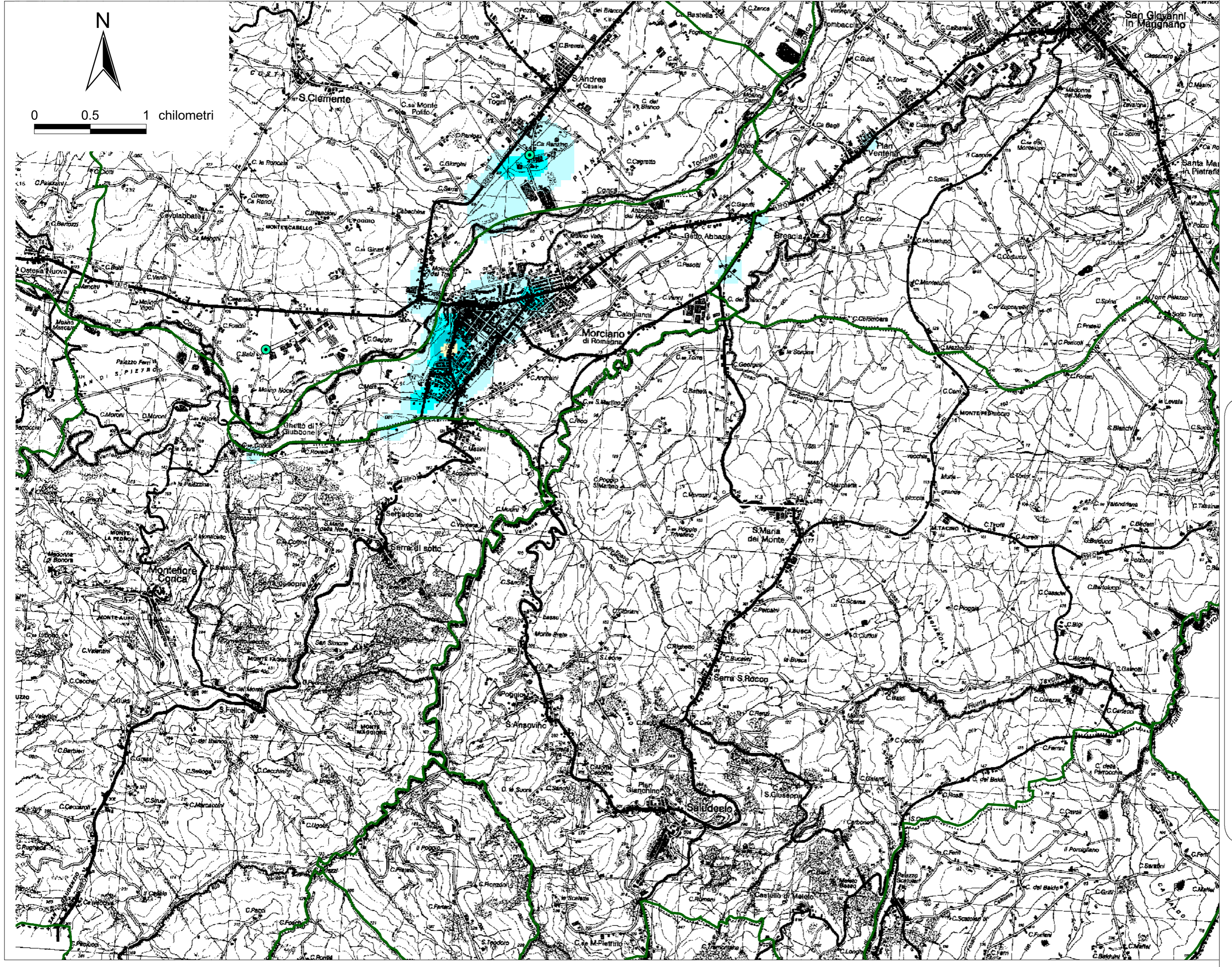


agenzia regionale per la protezione dell'ambiente

PM10-2003

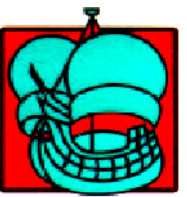
Media annua dei valori giornalieri [ug/m³]

- | | |
|--|--------------|
| | 33 - 36 |
| | 36 - 37 |
| | 37 - 38 |
| | 38 - 40 |
| | 40 - 41.6 |
| | 41.6 - 43.2 |
| | 43.2 - 50 |
| | 50 - 60 |
| | Nessun dato |
| | M1-Punt. |
| | M2-Punt. |
| | M3-4-6-Punt. |
| | Stazioni RQA |





0 0.5 1 chilometri



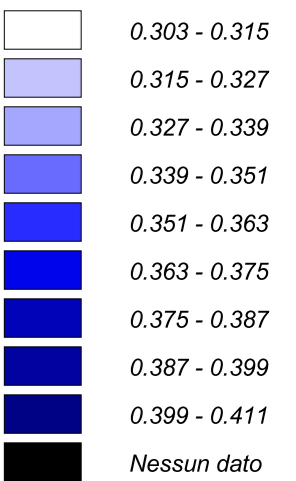
PROVINCIA
DI RIMINI




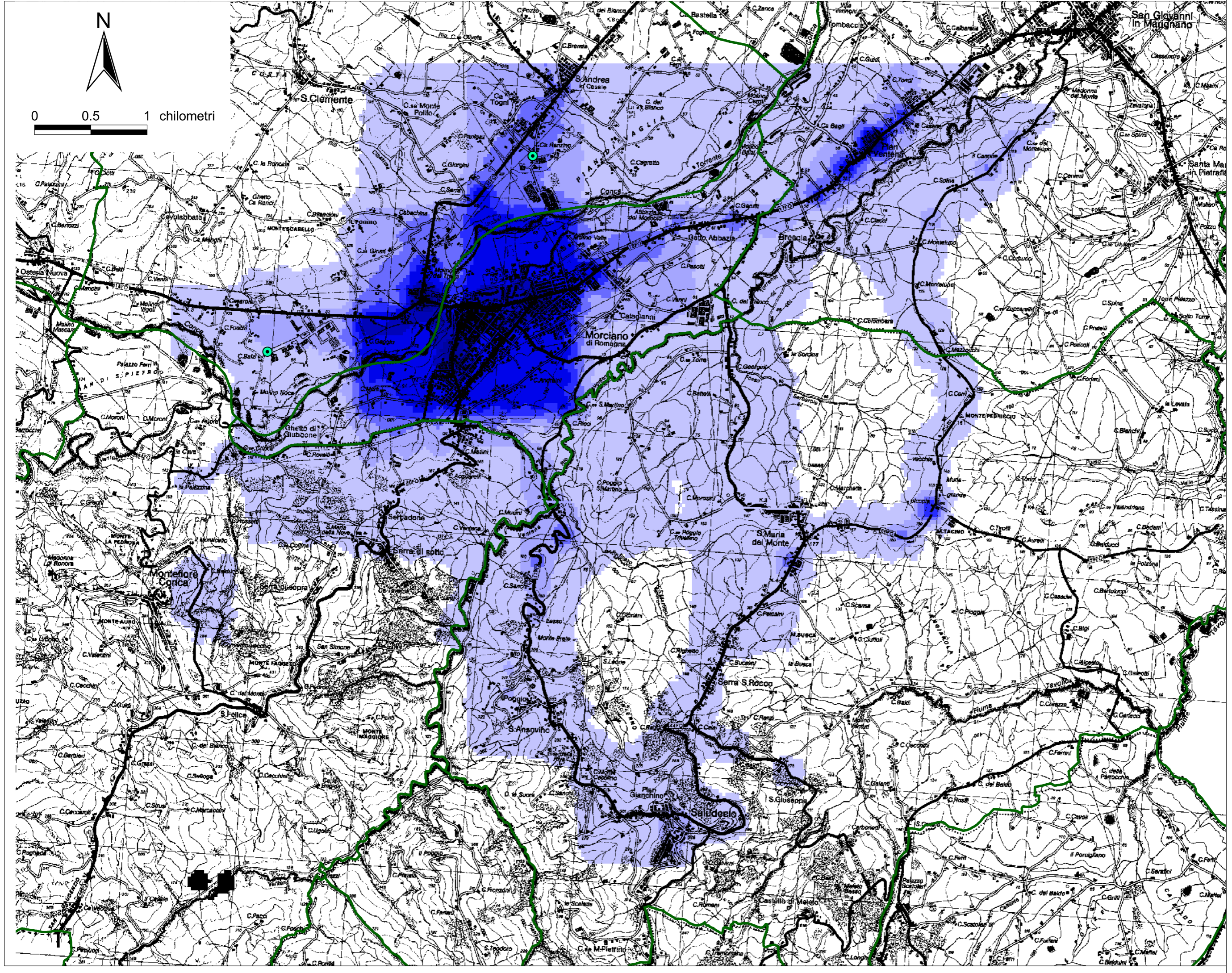
agenzia
regionale
prevenzione e
controllo dell'ambiente

CO - 2003

Media annua
dei valori orari
[mg/m³]

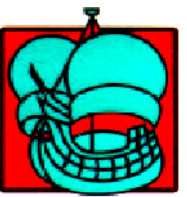


 M3-4-6-Punt.





0 0.5 1 chilometri



PROVINCIA
DI RIMINI



agenzia
regionale
protezione e
controllo dell'ambiente

VOC - 2003

Media annua
dei valori orari
[$\mu\text{g}/\text{m}^3$]

