



**Le conoscenze geologiche  
10 anni dopo**

Venerdì 27 maggio 2022  
Bologna | viale della Fiera, 8  
Terza Torre | Sala 20 maggio 2012

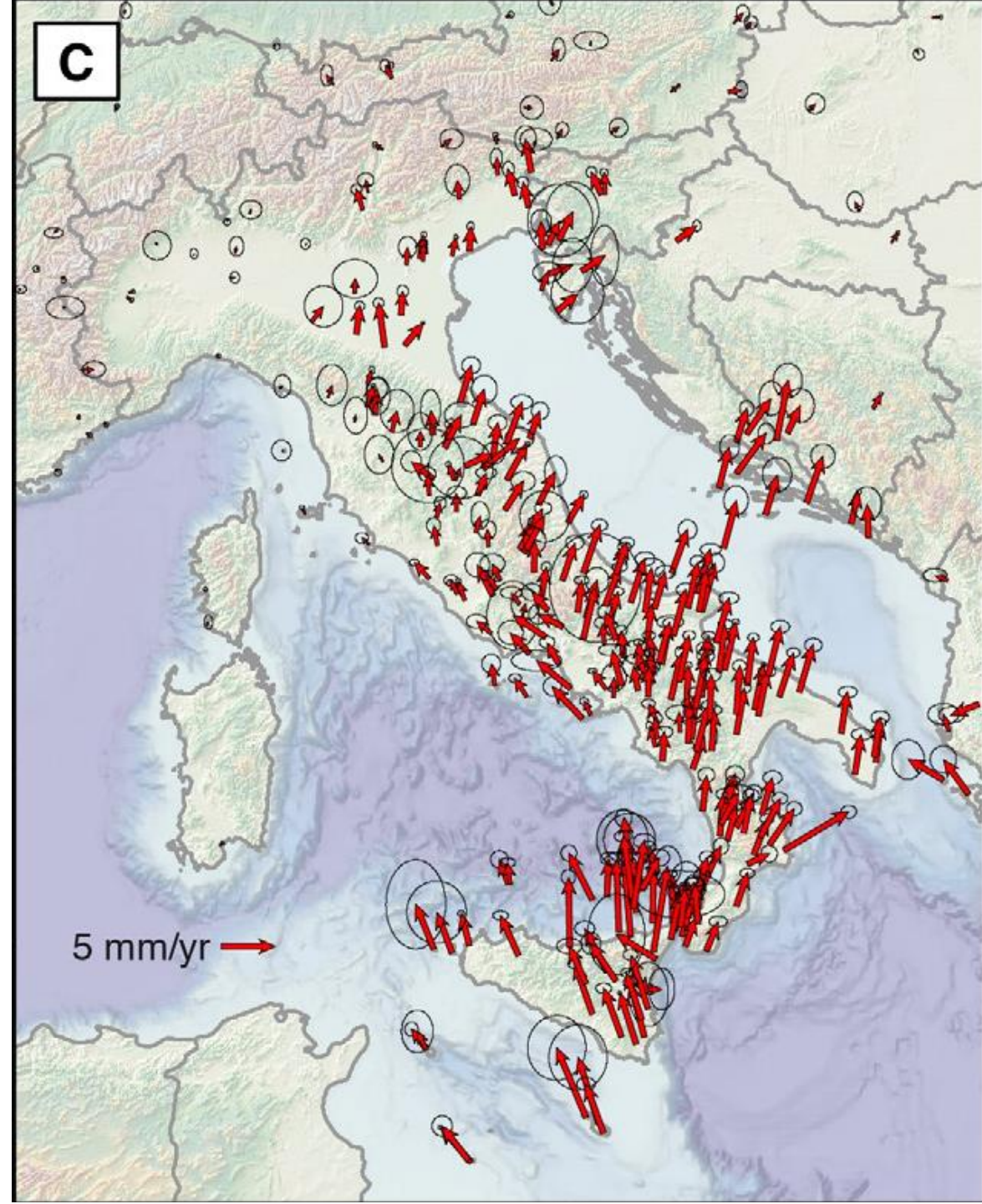
**Inquadramento sismotettonico  
dell'area epicentrale:  
considerazioni sulla pericolosità  
sismica**

**Riccardo Caputo**



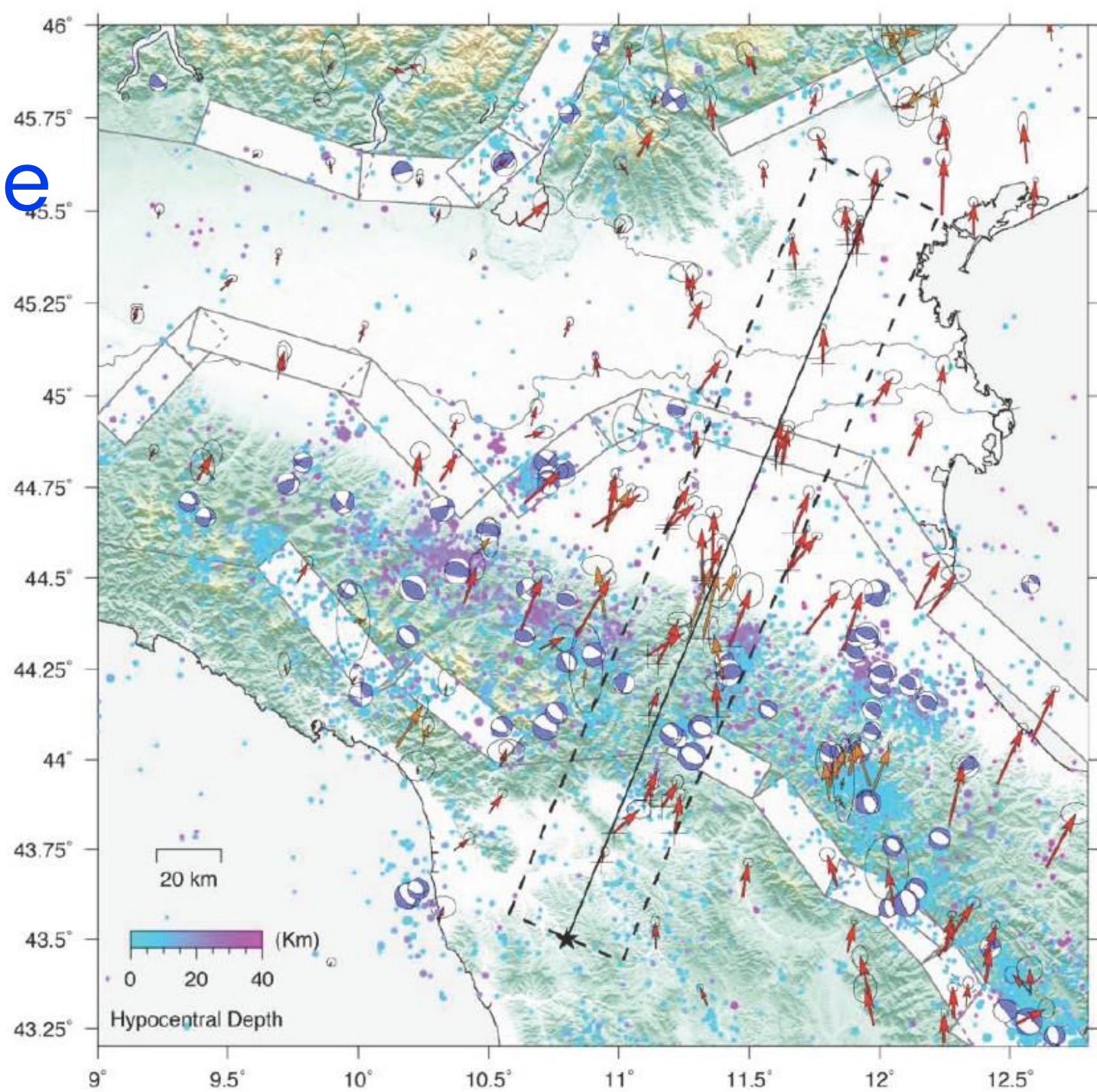
Università di Ferrara

# campo velocità Italia

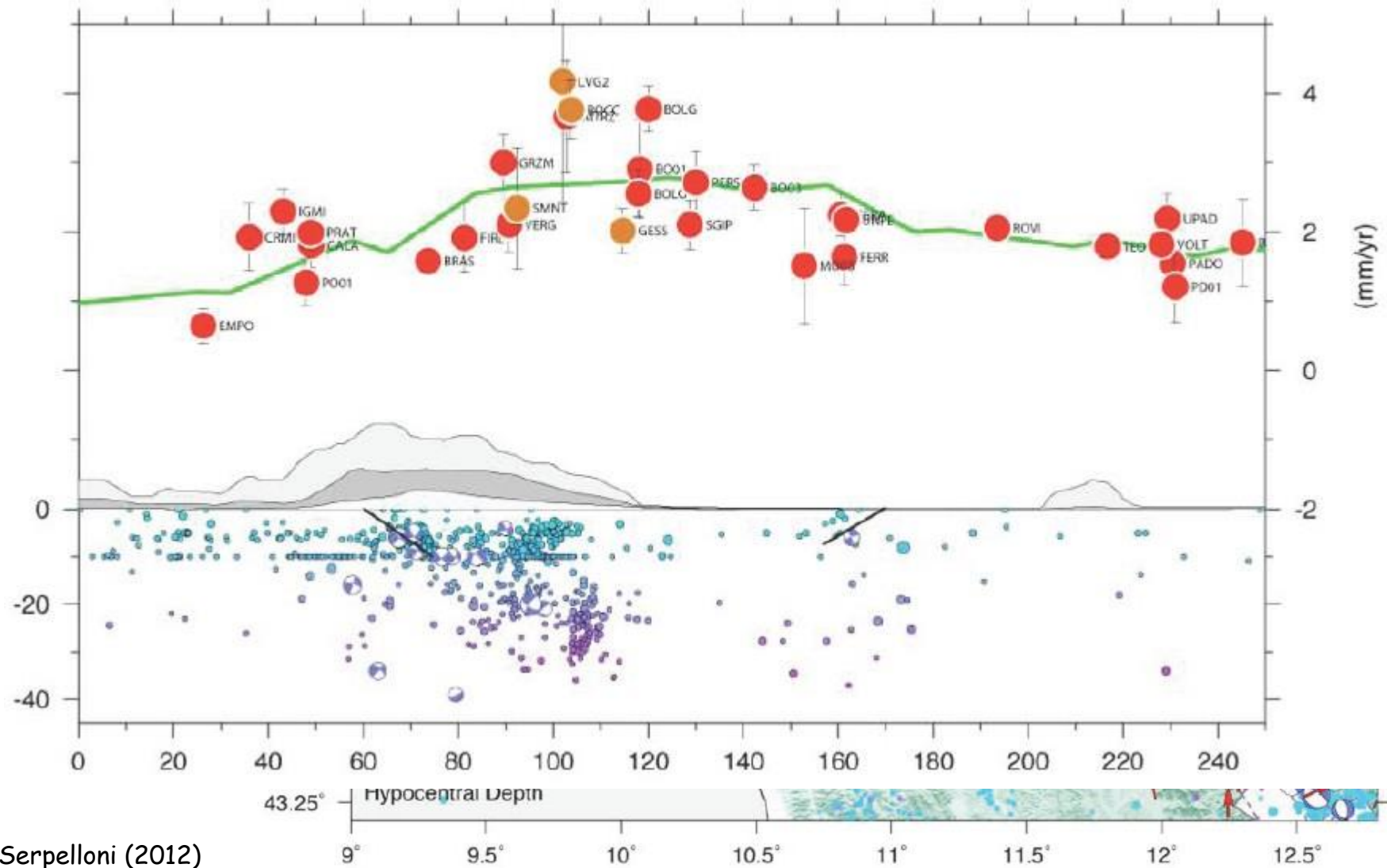
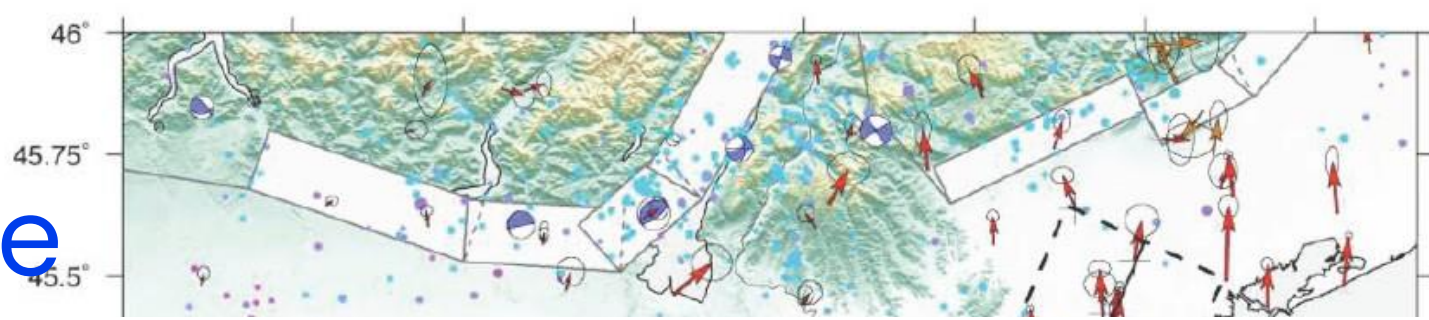




# campo velocità Italia settentrionale

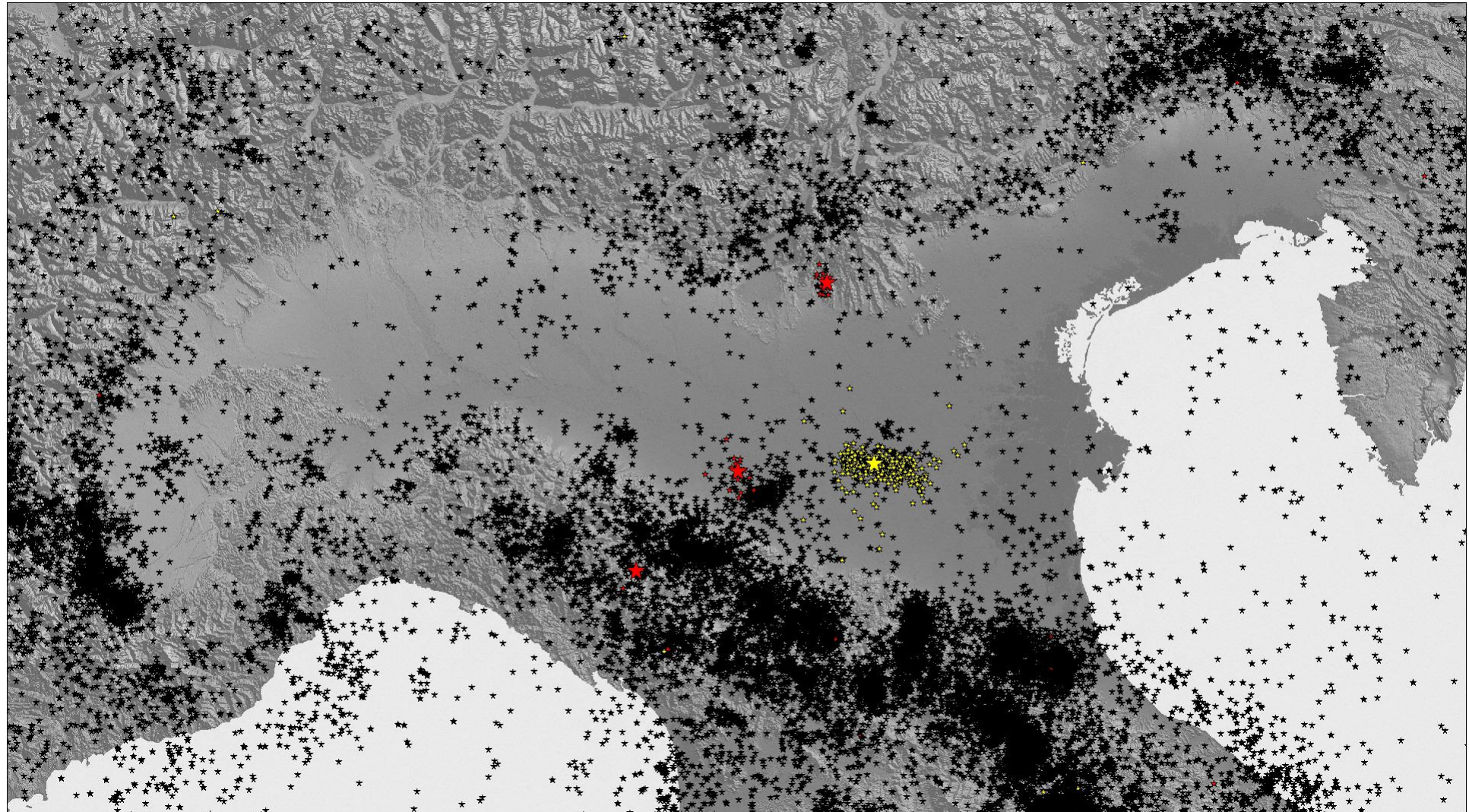


# campo velocità Italia settentrionale



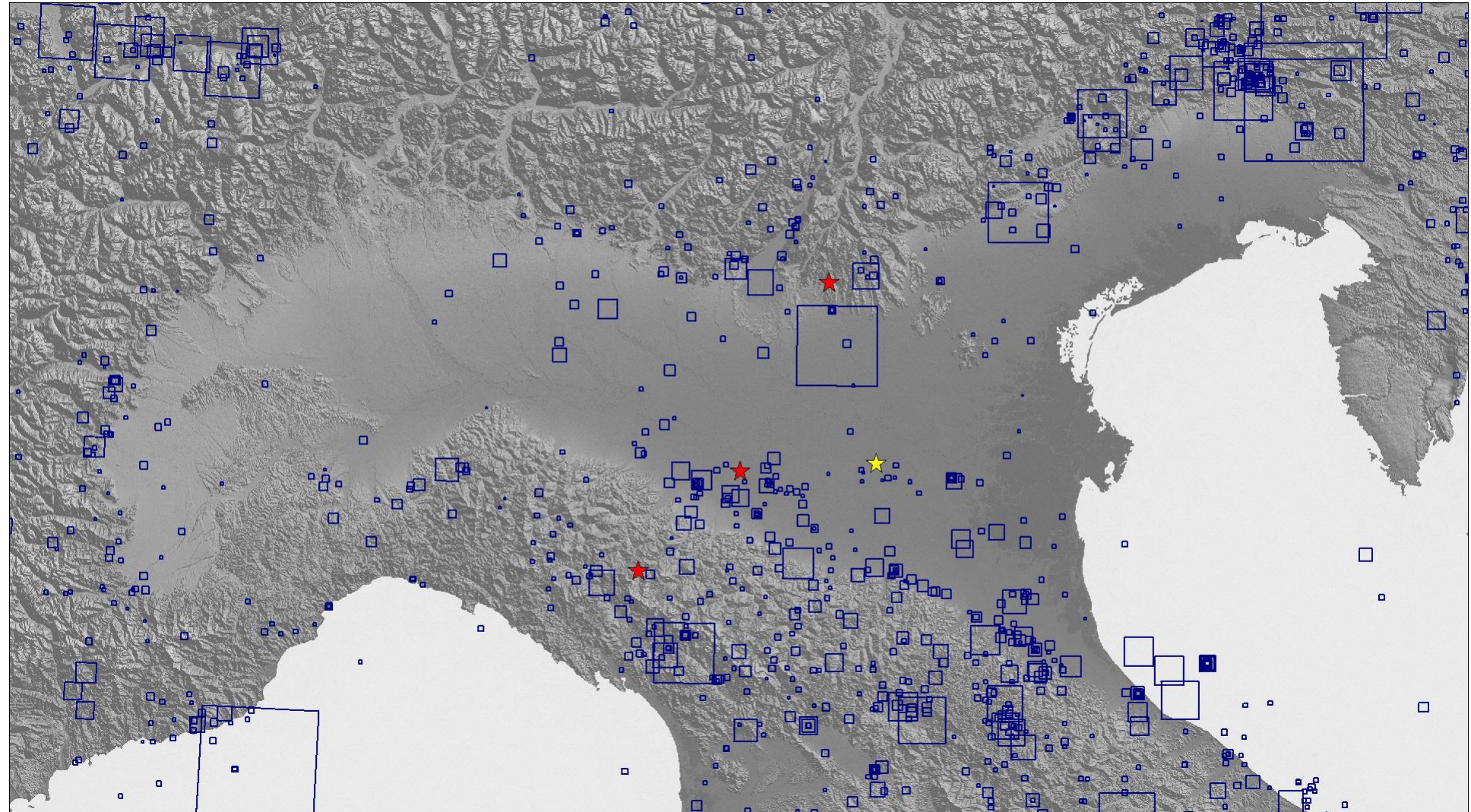


# sismicità strumentale (INGV catalogue 1981-2012)





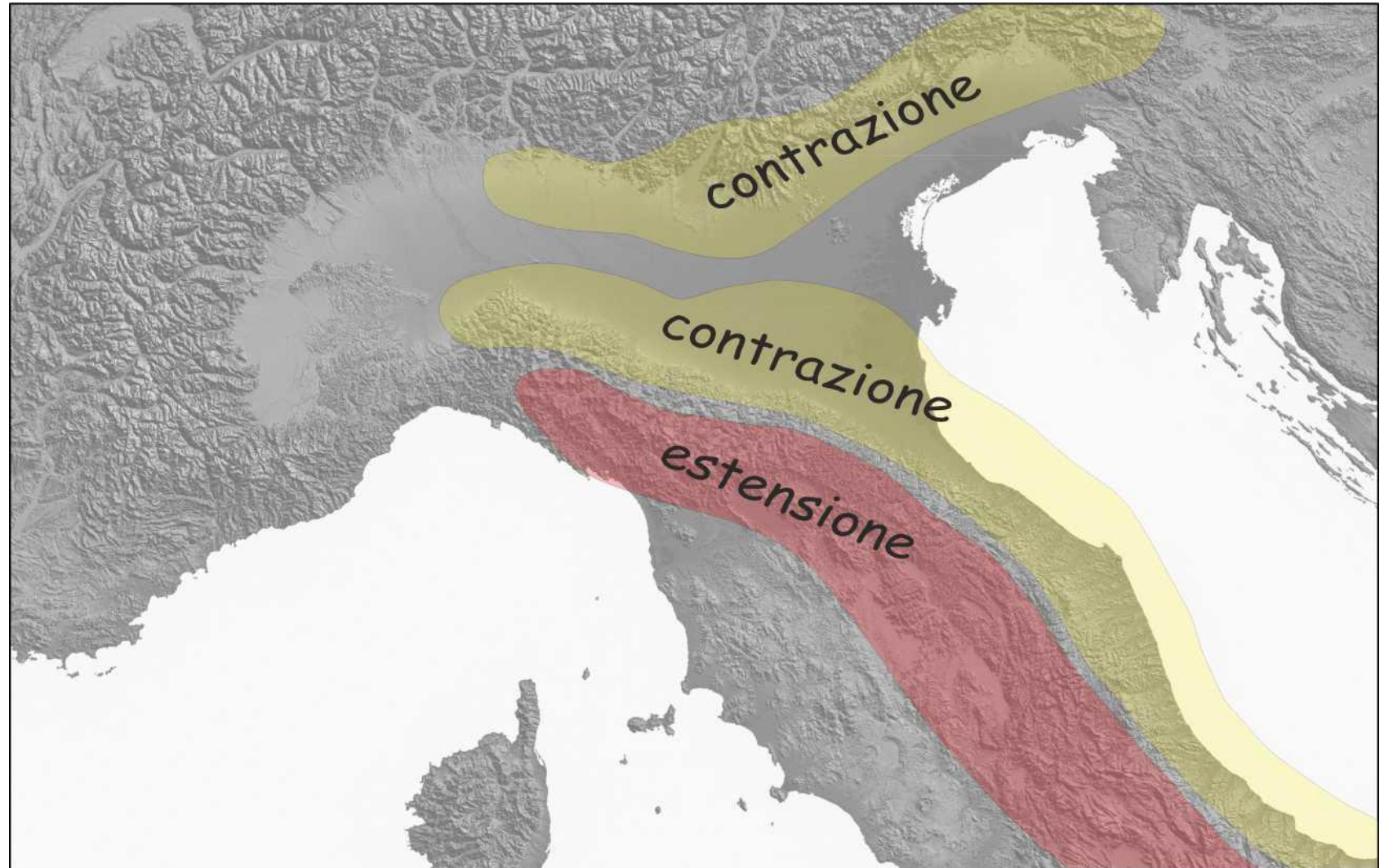
# sismicità storica (CPT11 catalogue)





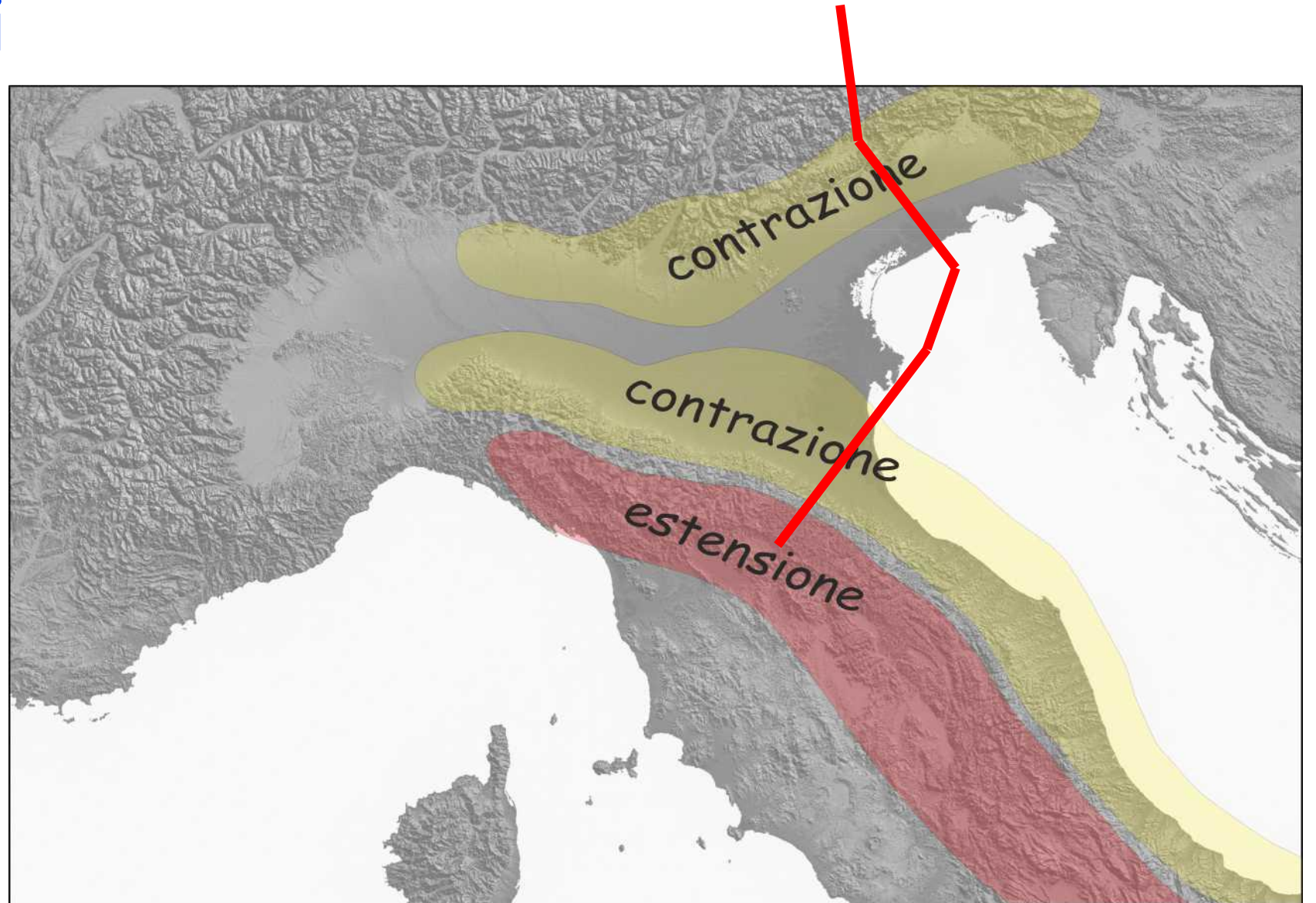
# Italia settentrionale

## regimi tettonici



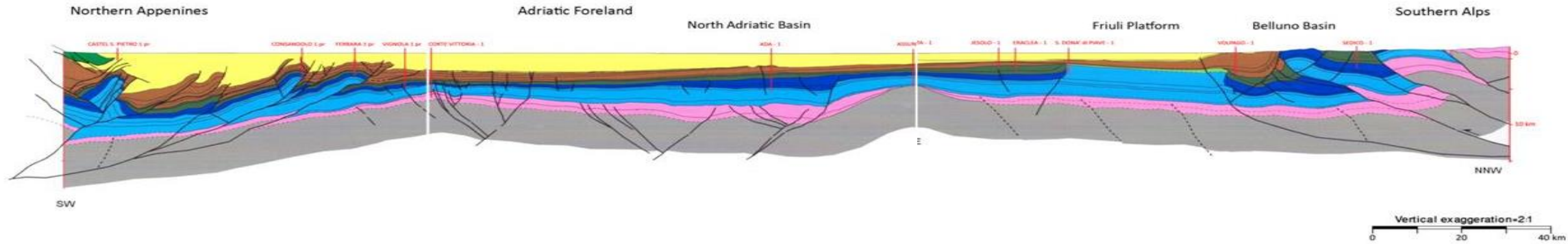
# Italia settentrionale

## regimi tettonici





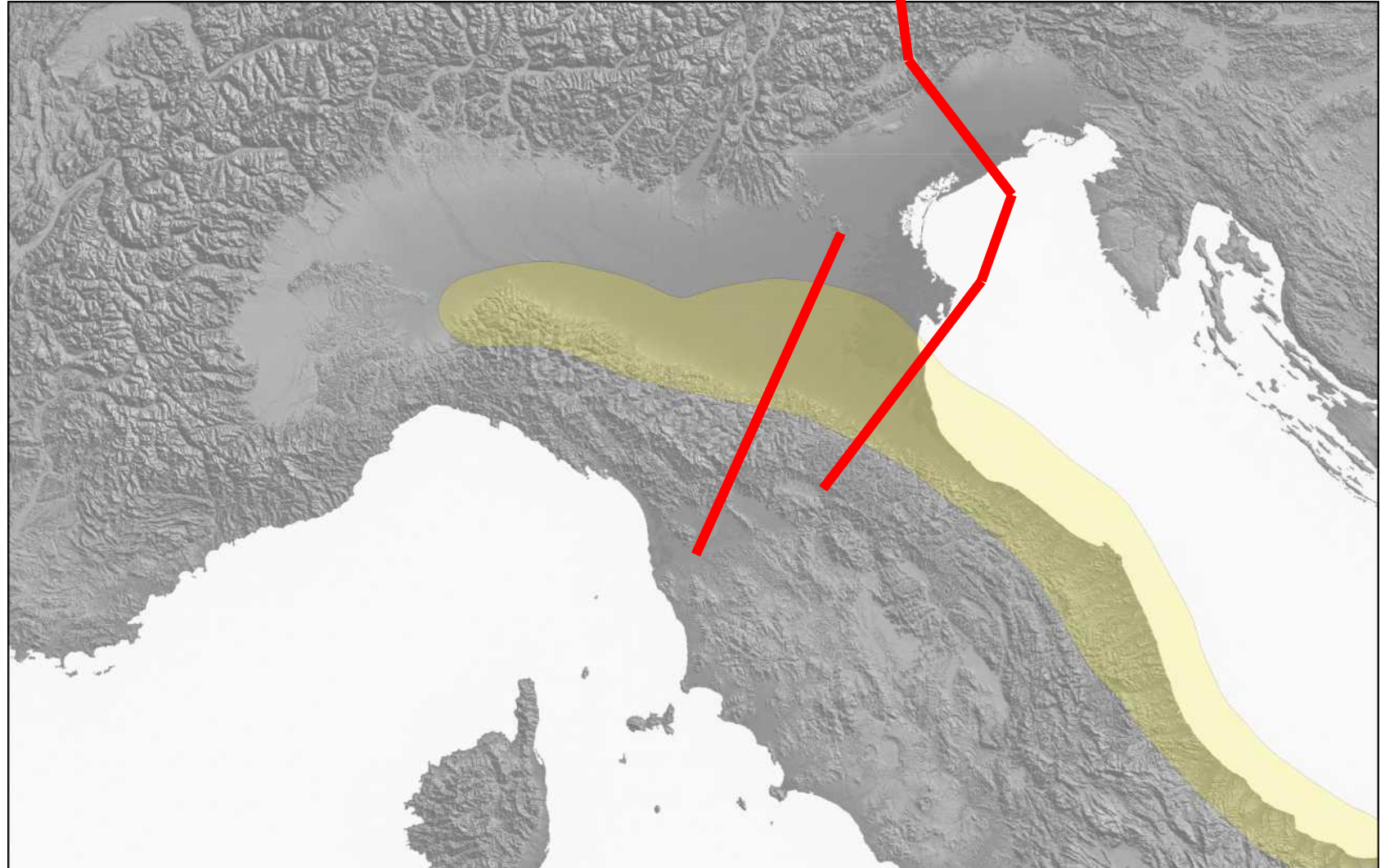
# Alpi *versus* Appennini



Masetti et al. (2012)

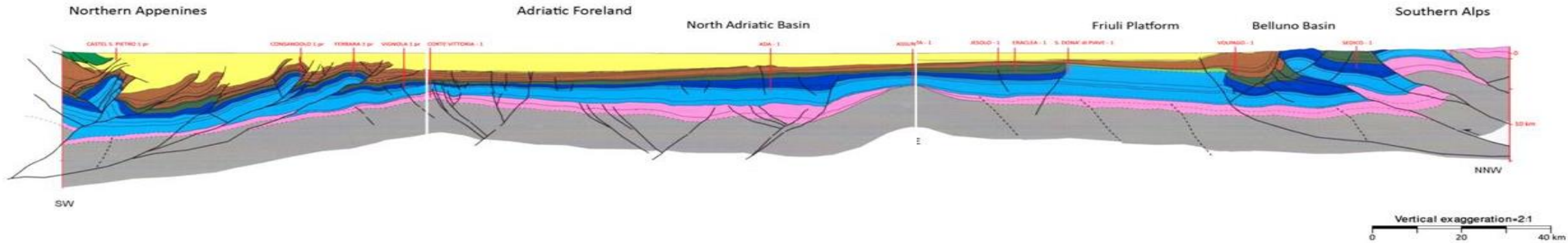
# Appennino Settentrionale

regime tettonico compressivo

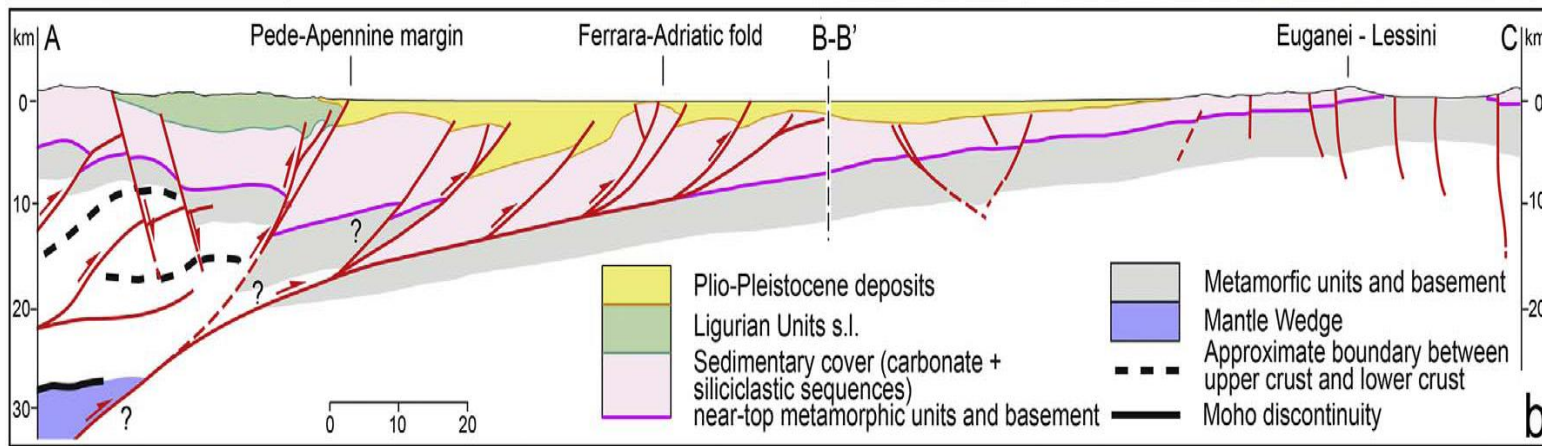




# Appennino Settentrionale regime tettonico compressivo



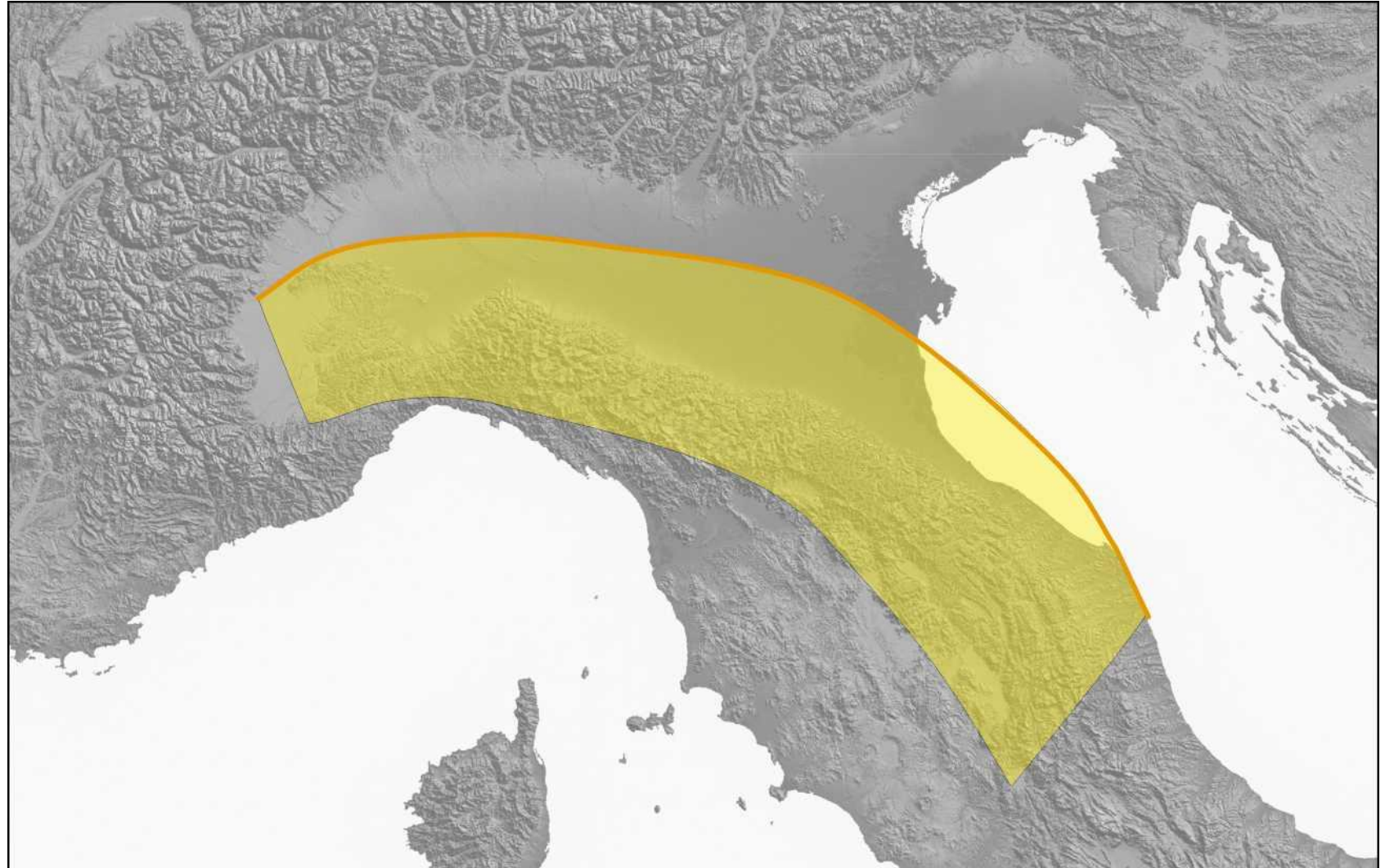
Masetti et al. (2012)



Meastrelli et al. (2018)

# Appennino Settentrionale

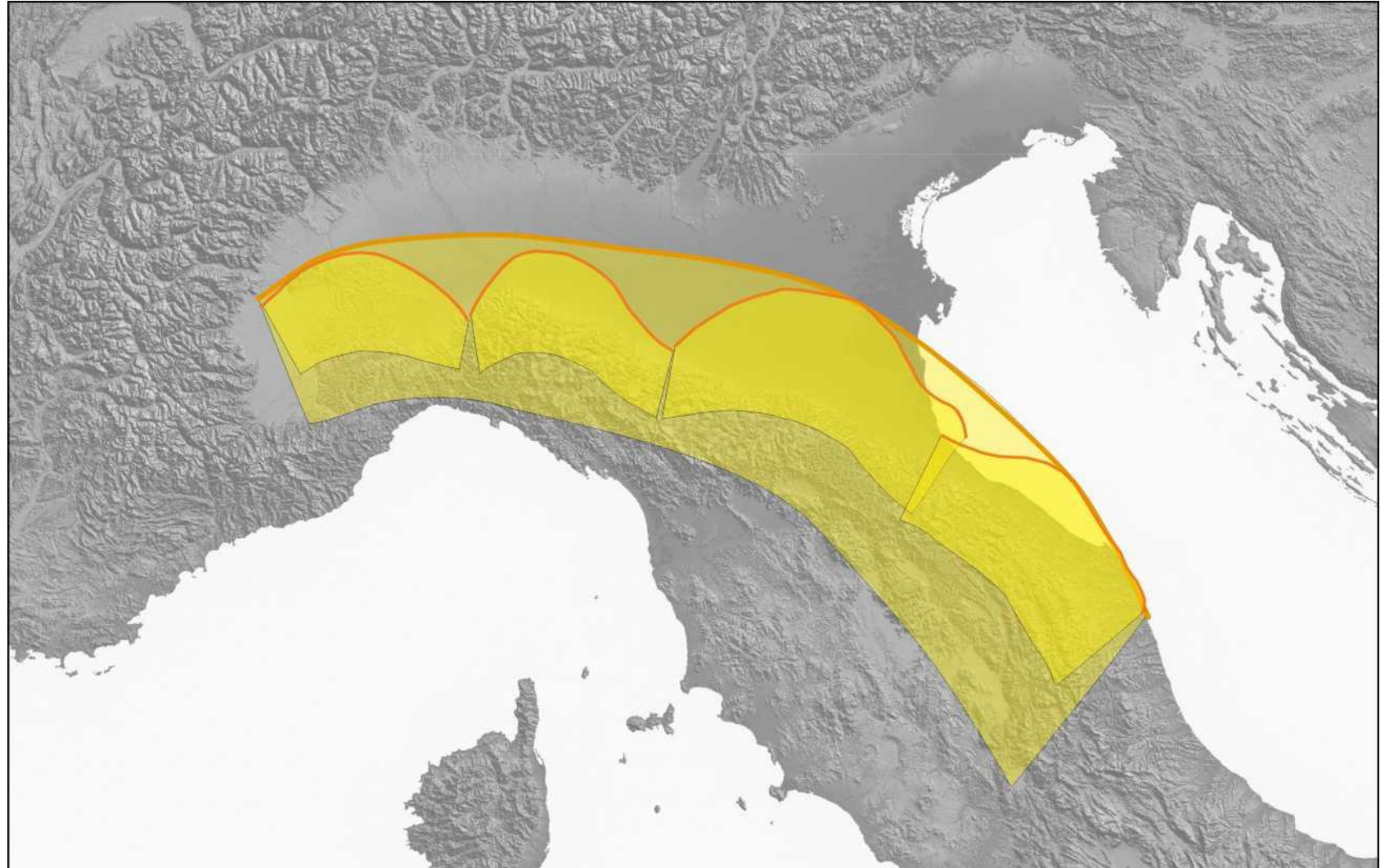
struttura 1° ordine





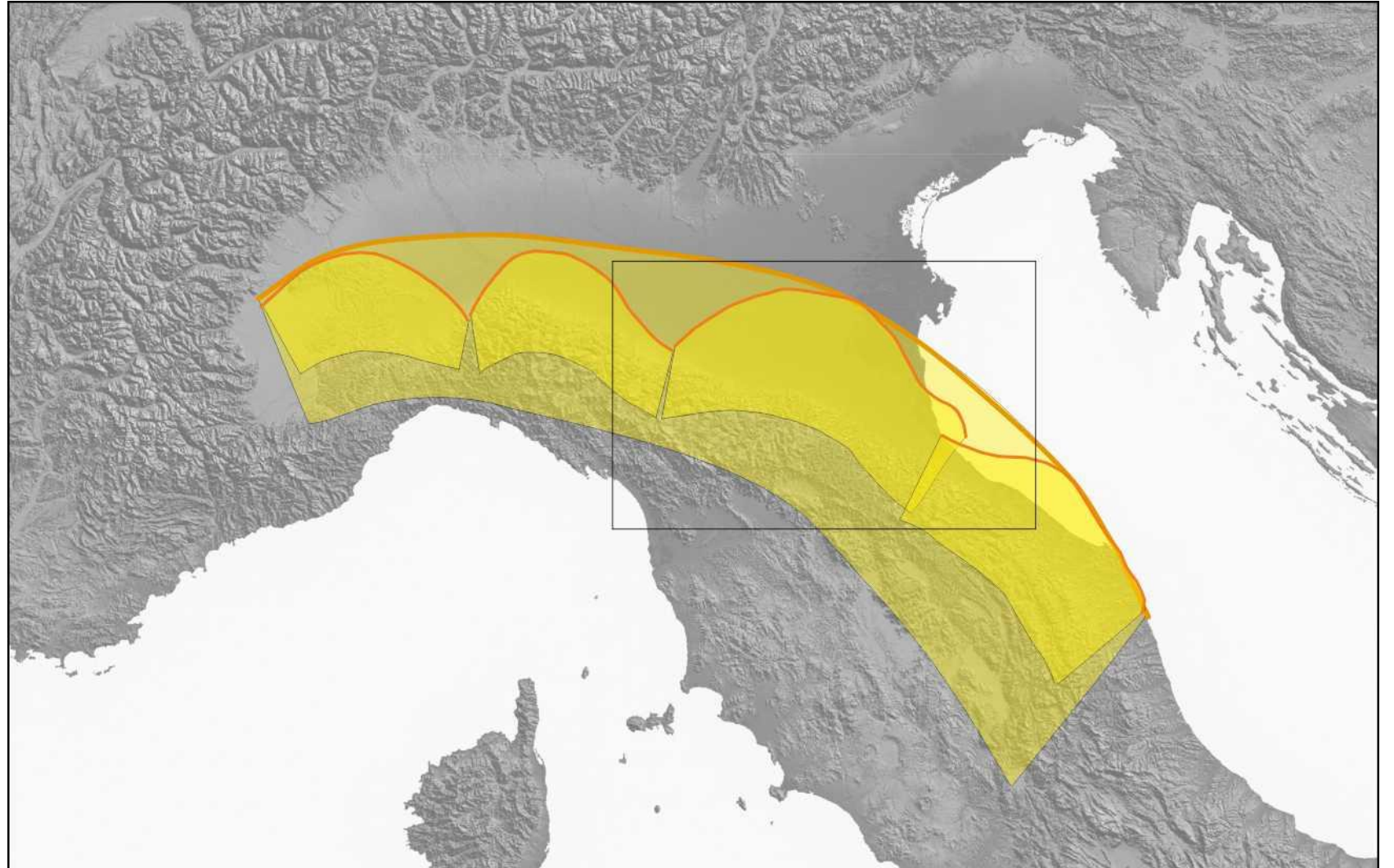
# Appennino Settentrionale

strutture 1° e 2° ordine



# Appennino Settentrionale

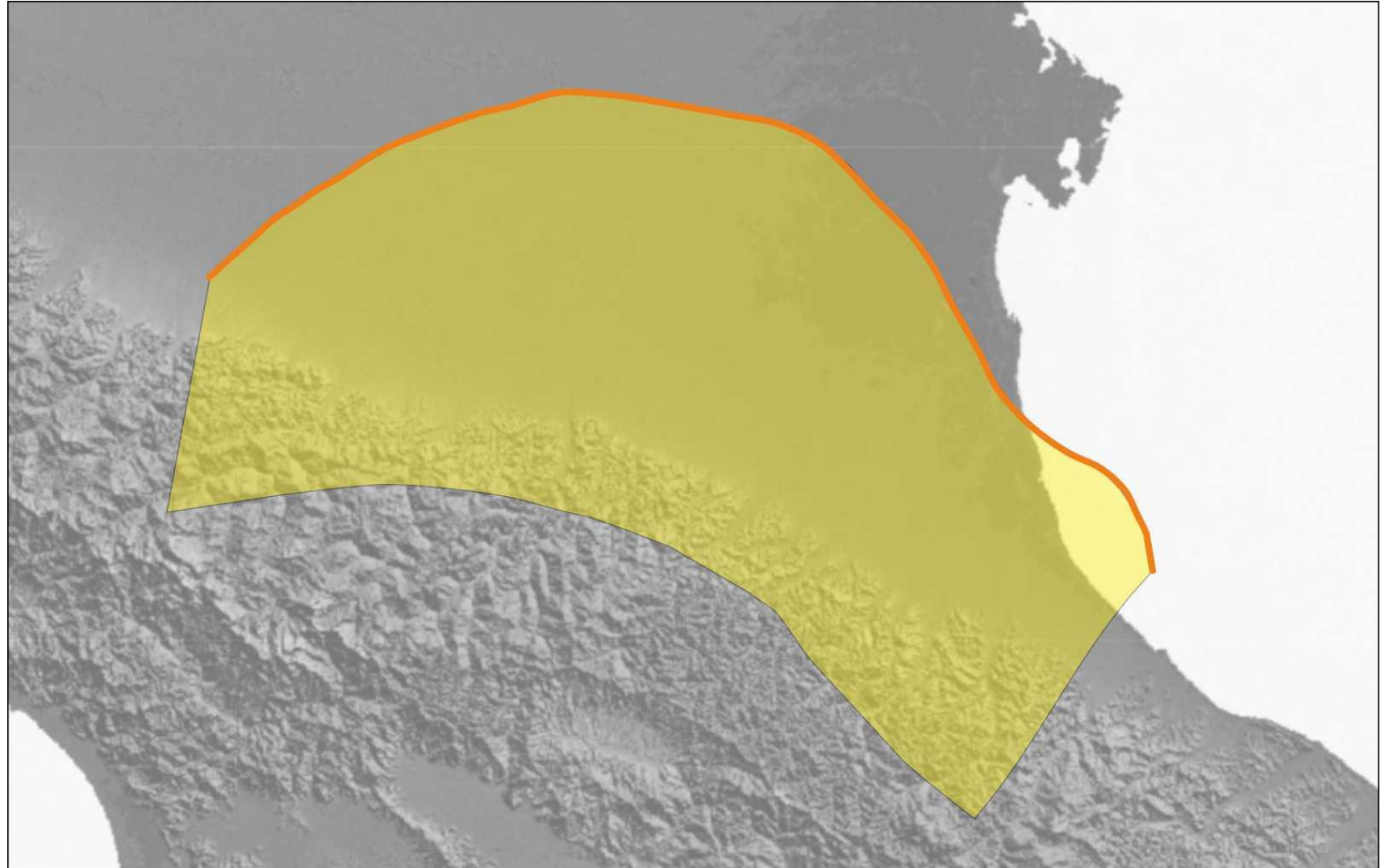
strutture 1° e 2° ordine



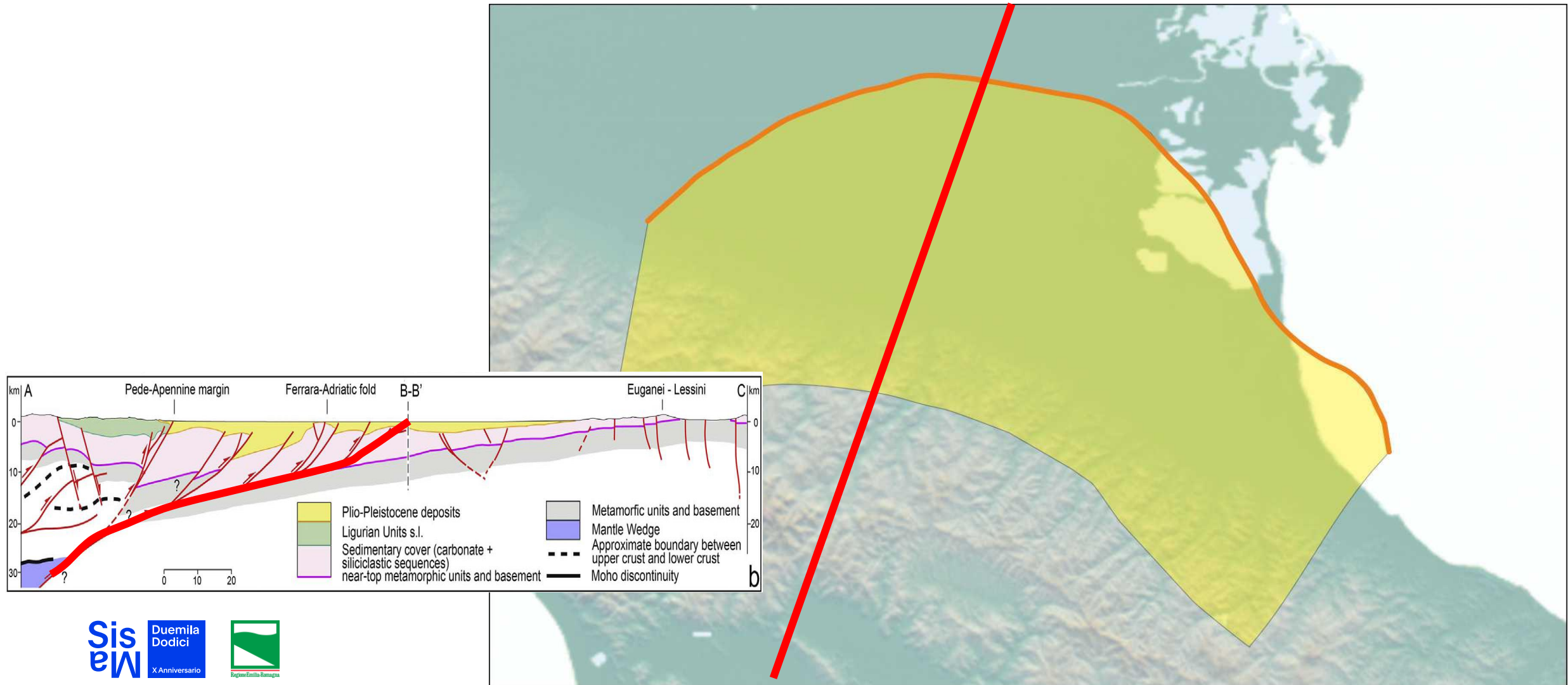


# Arco Ferrarese

struttura 2° ordine



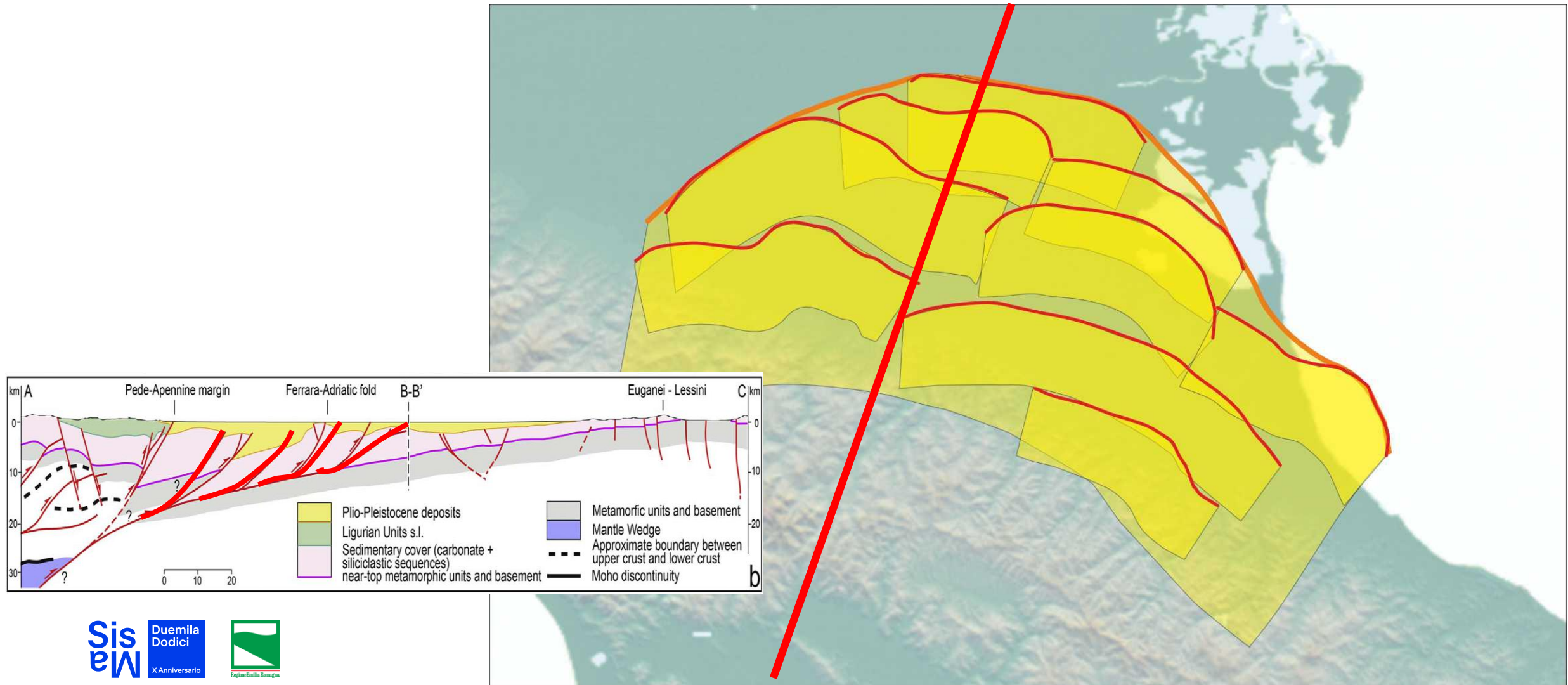
# Arco Ferrarese struttura 2° ordine





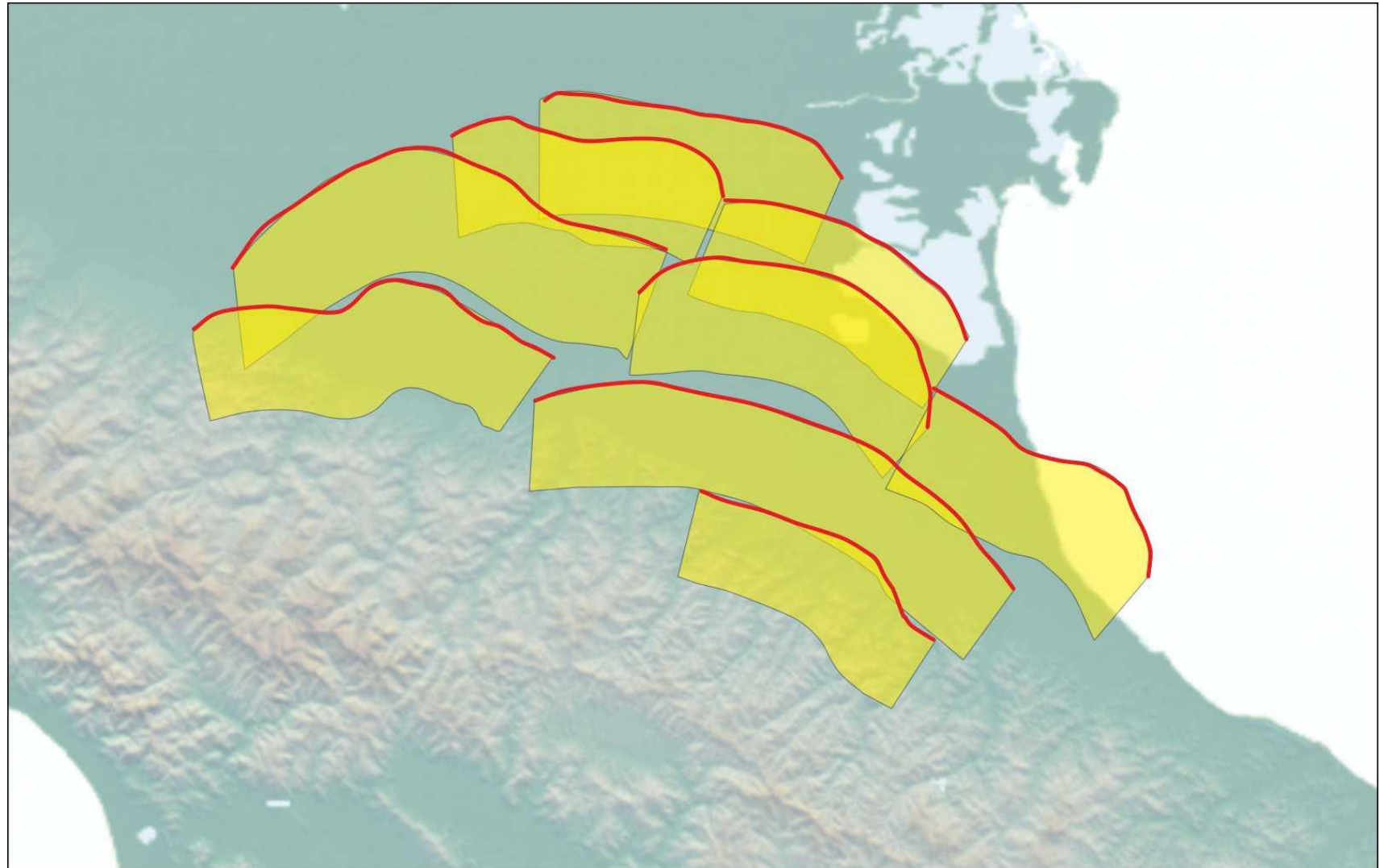
# Arco Ferrarese

## strutture 2° e 3° ordine



# Arco Ferrarese

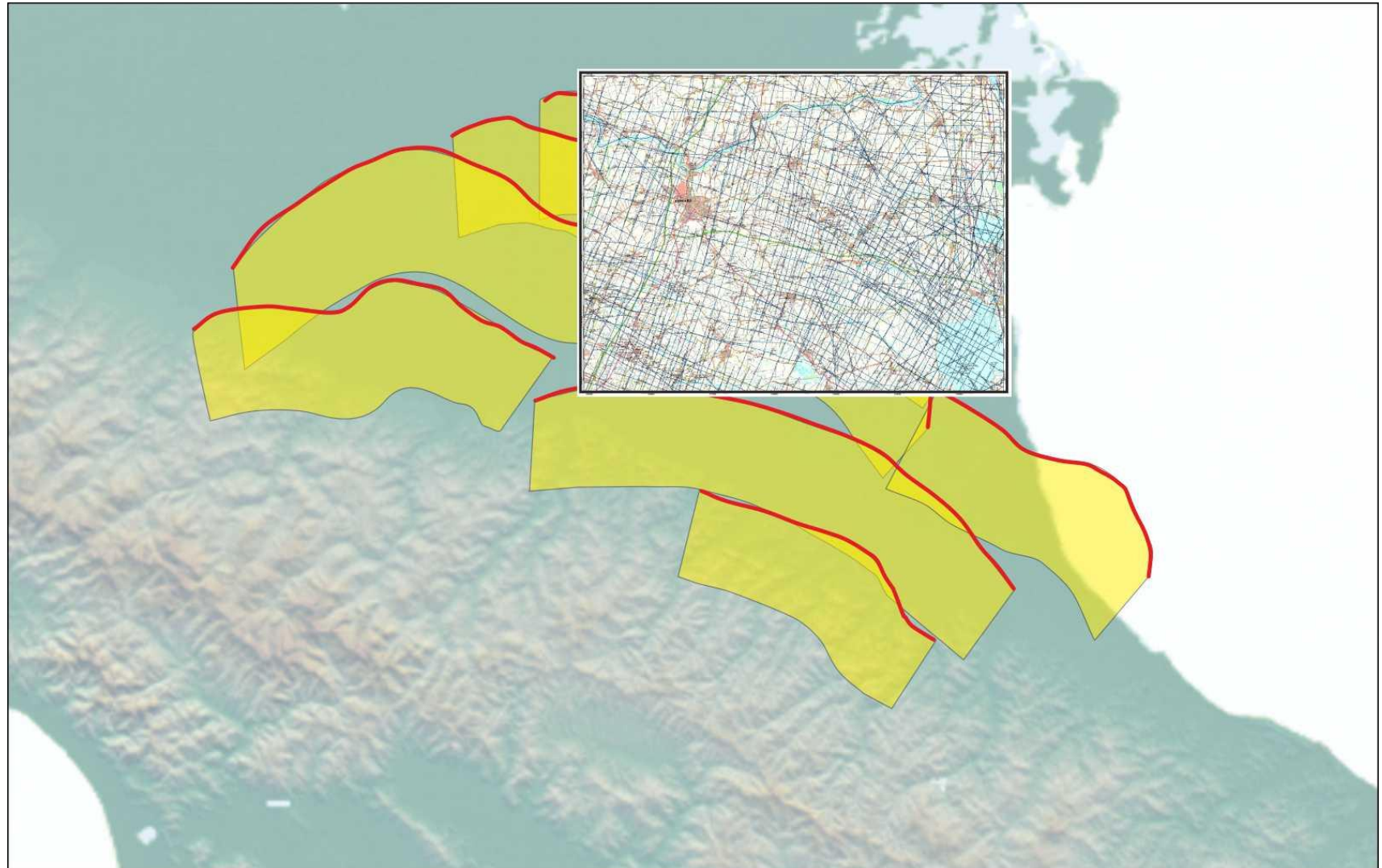
strutture 3° ordine





# Arco Ferrarese

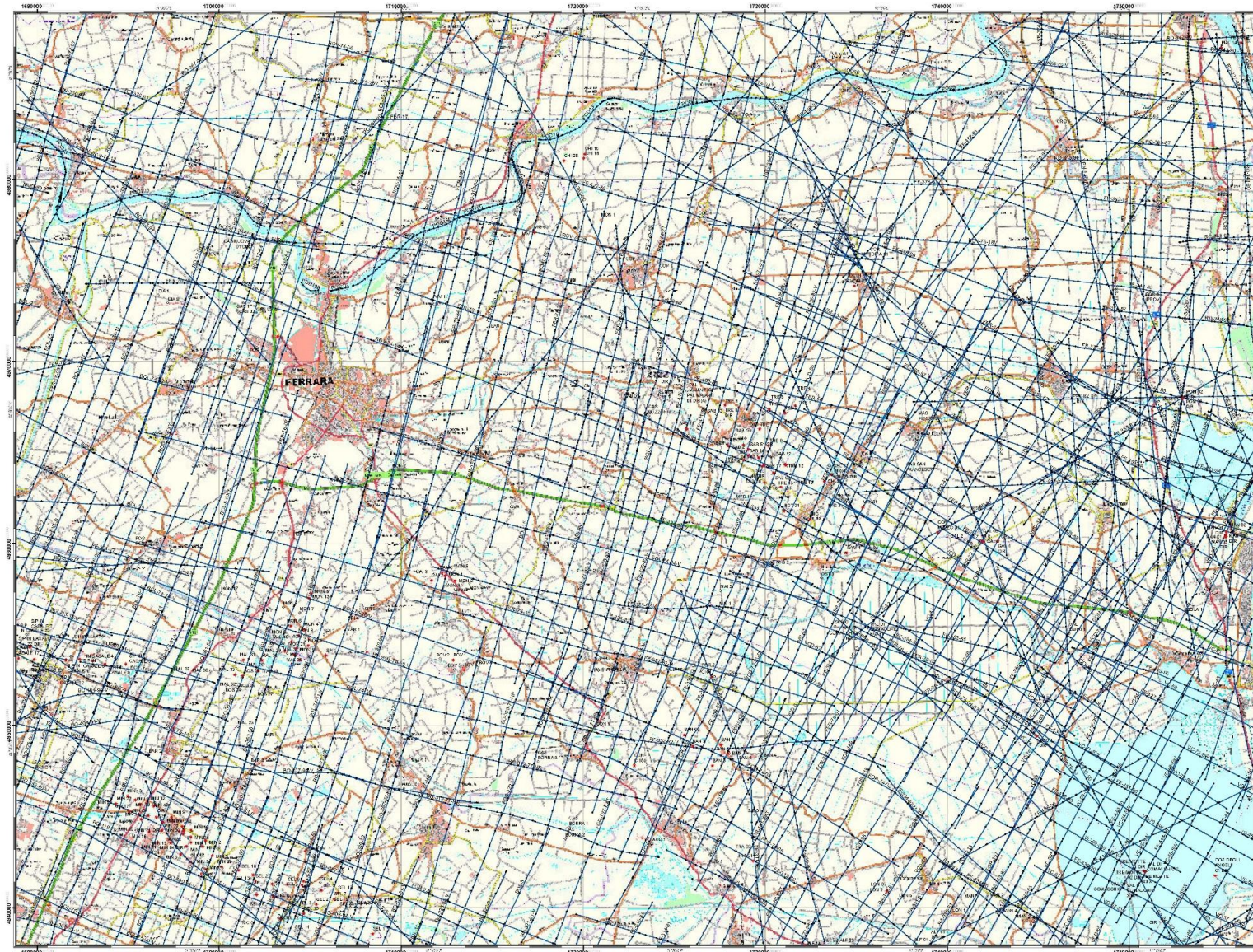
profili sismici disponibili





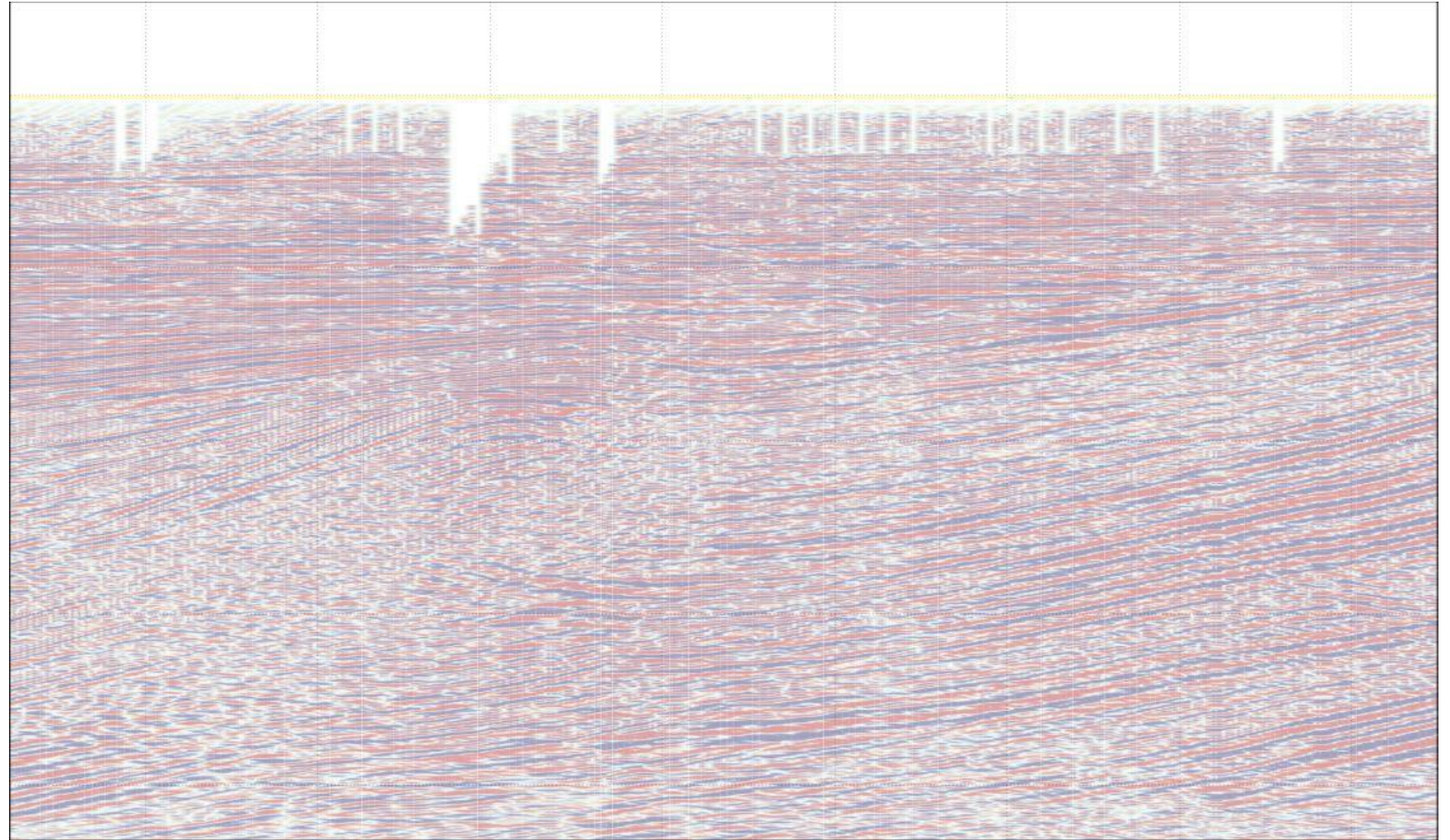
# dati 'disponibili'

## profili sismici e pozzi





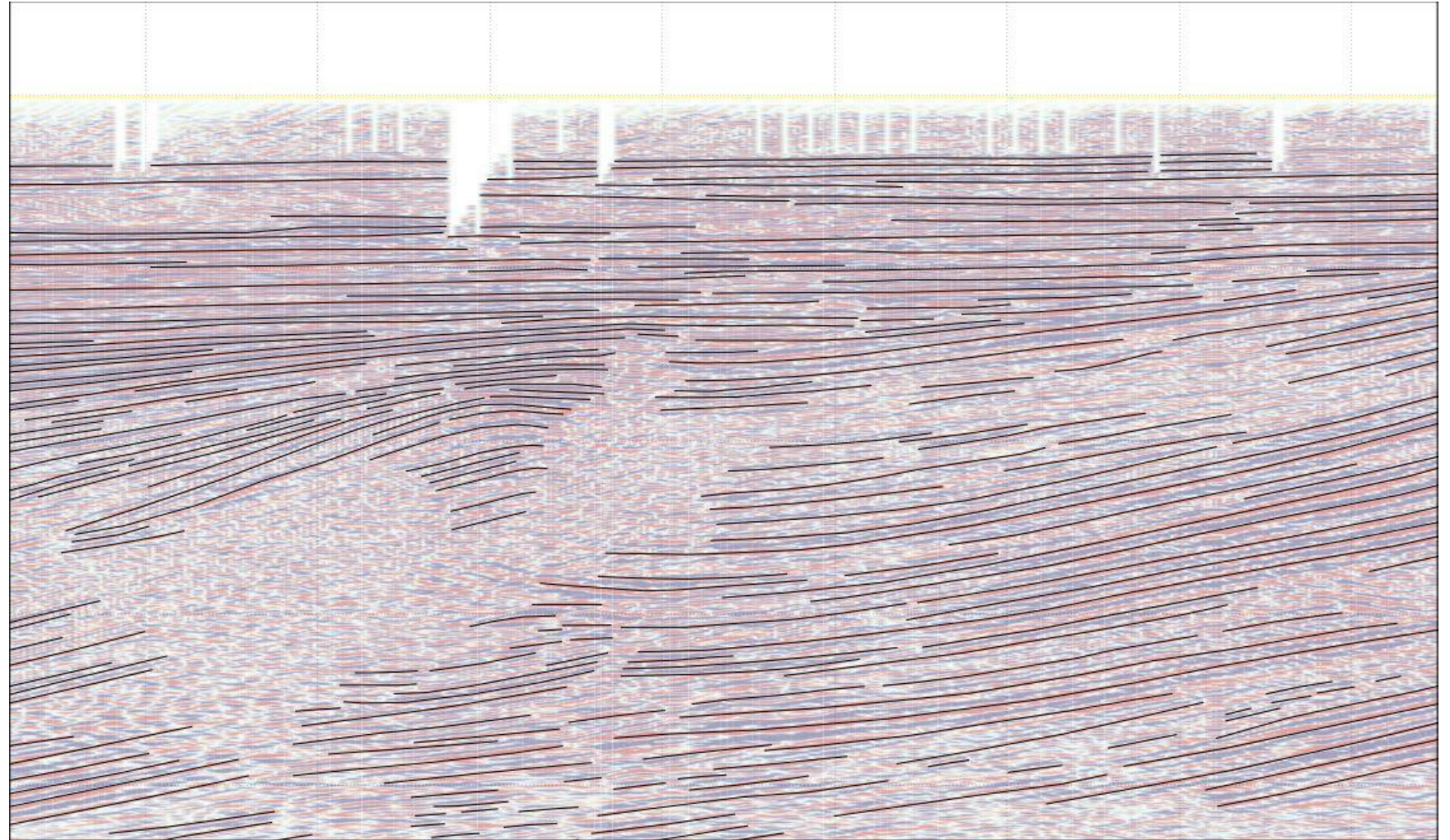
# esempio interpretazione 2D





# esempio interpretazione 2D

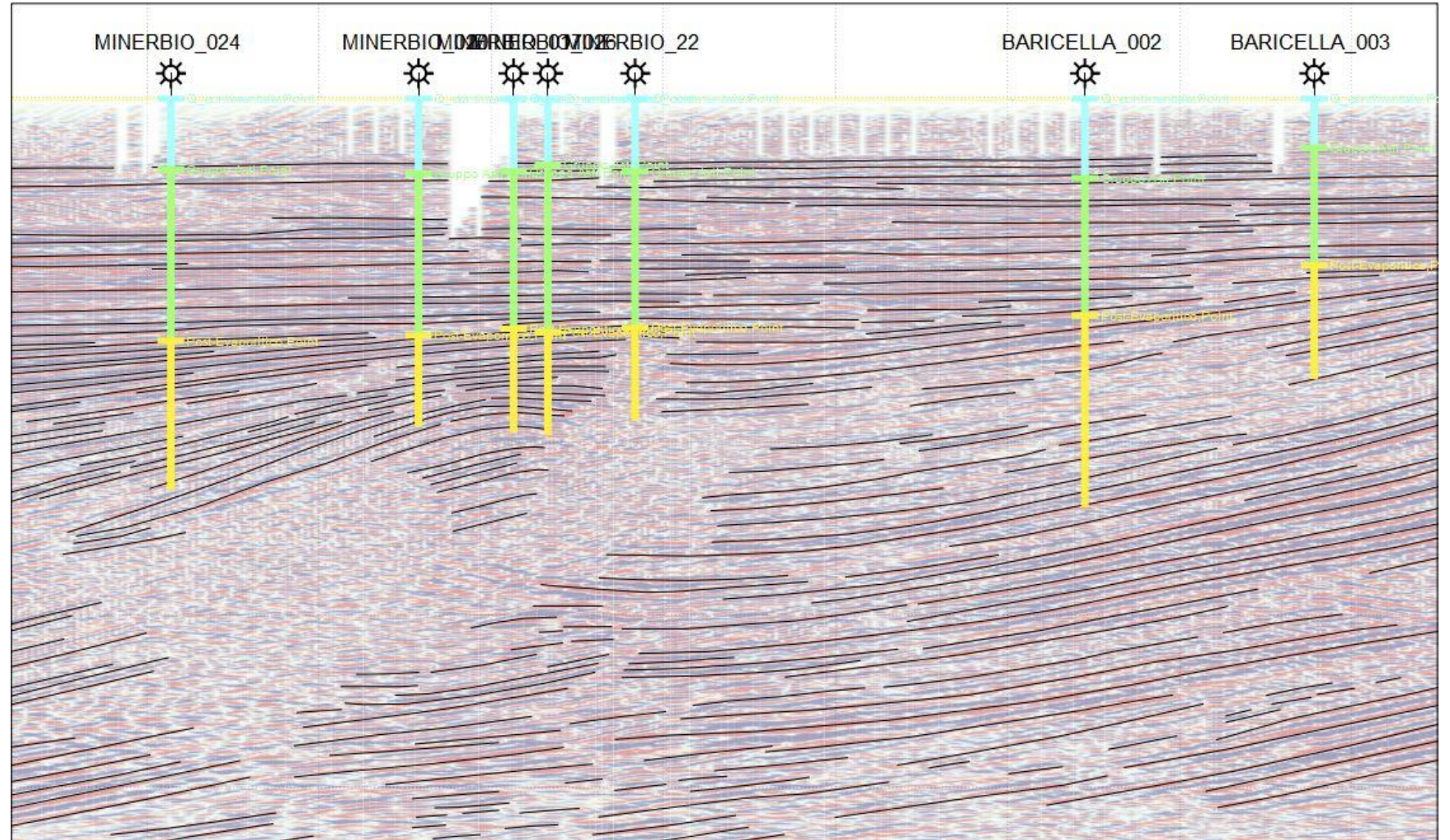
*line drawing*





# esempio interpretazione 2D

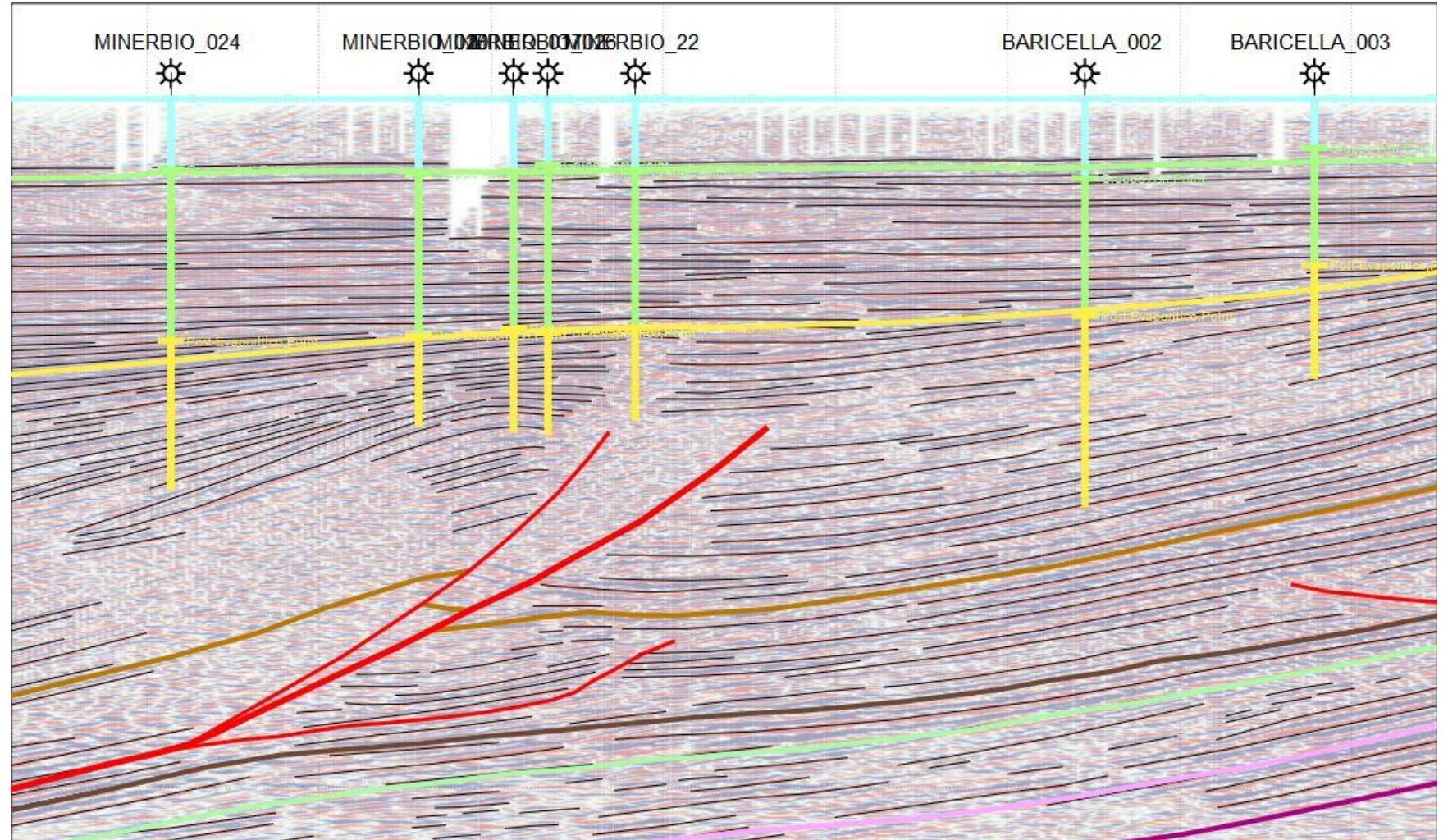
## proiezione pozzi





# esempio interpretazione 2D

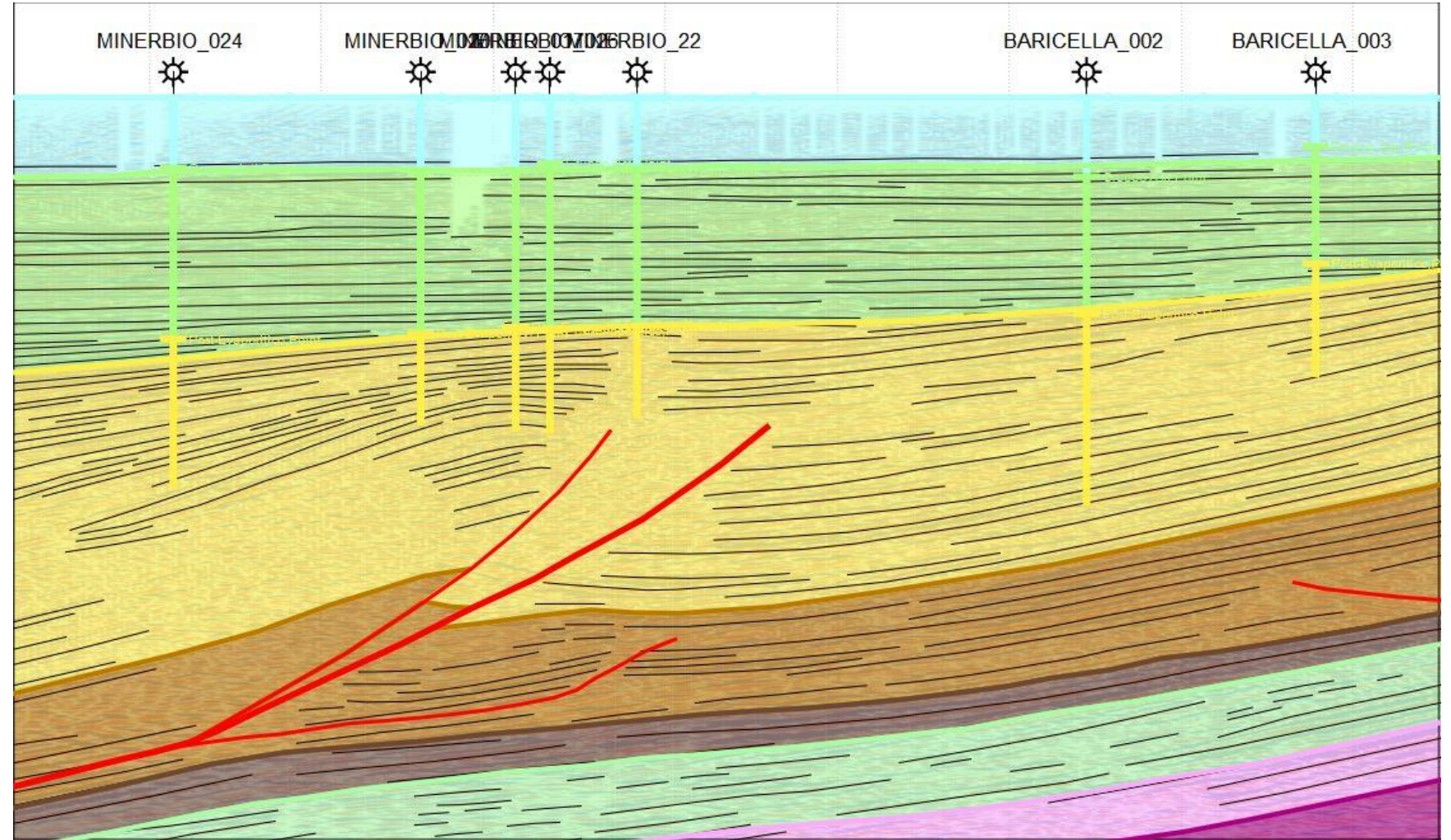
## caratterizzazione riflettori





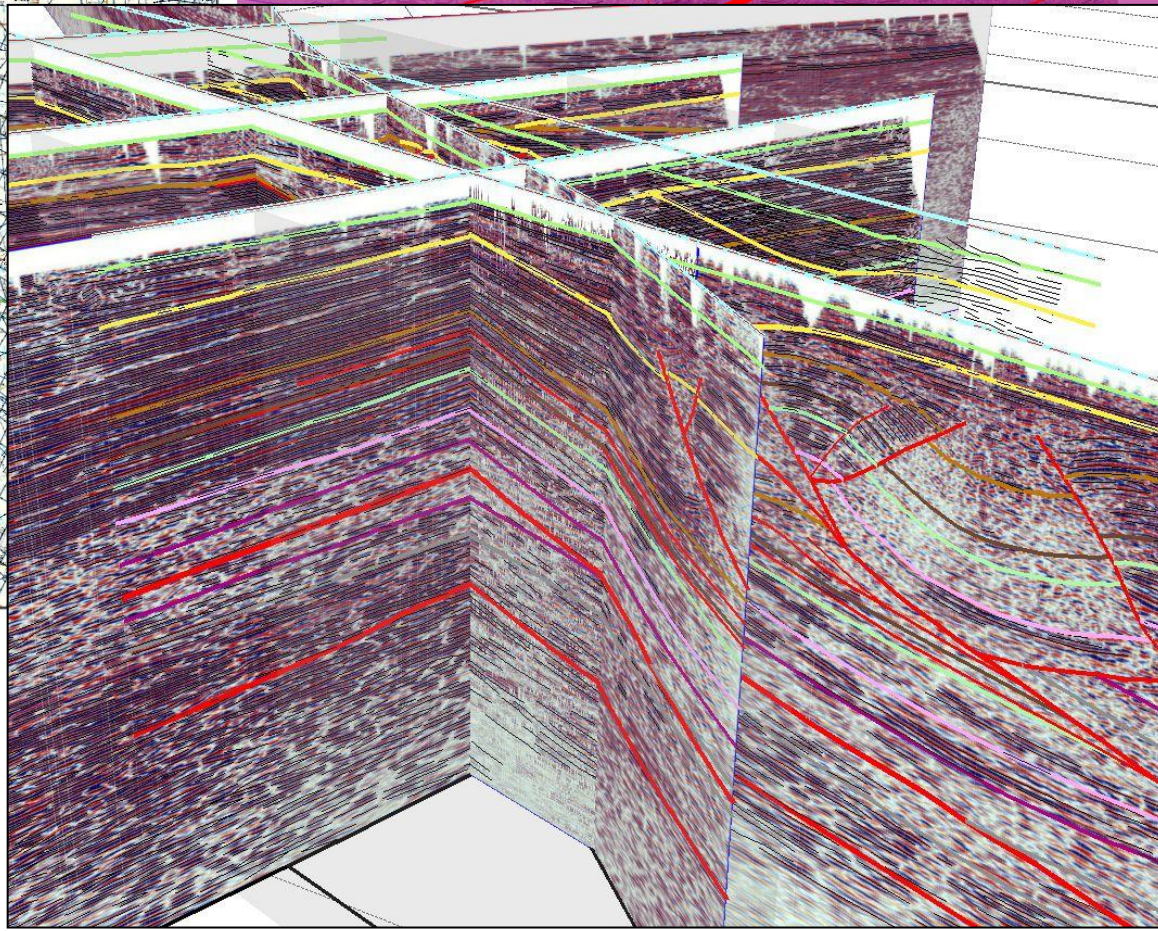
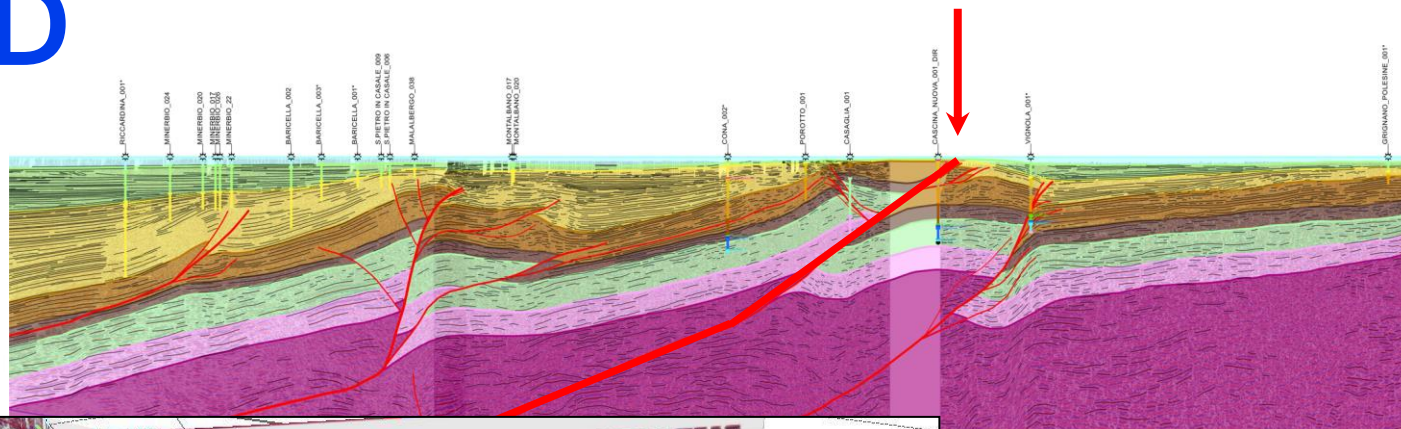
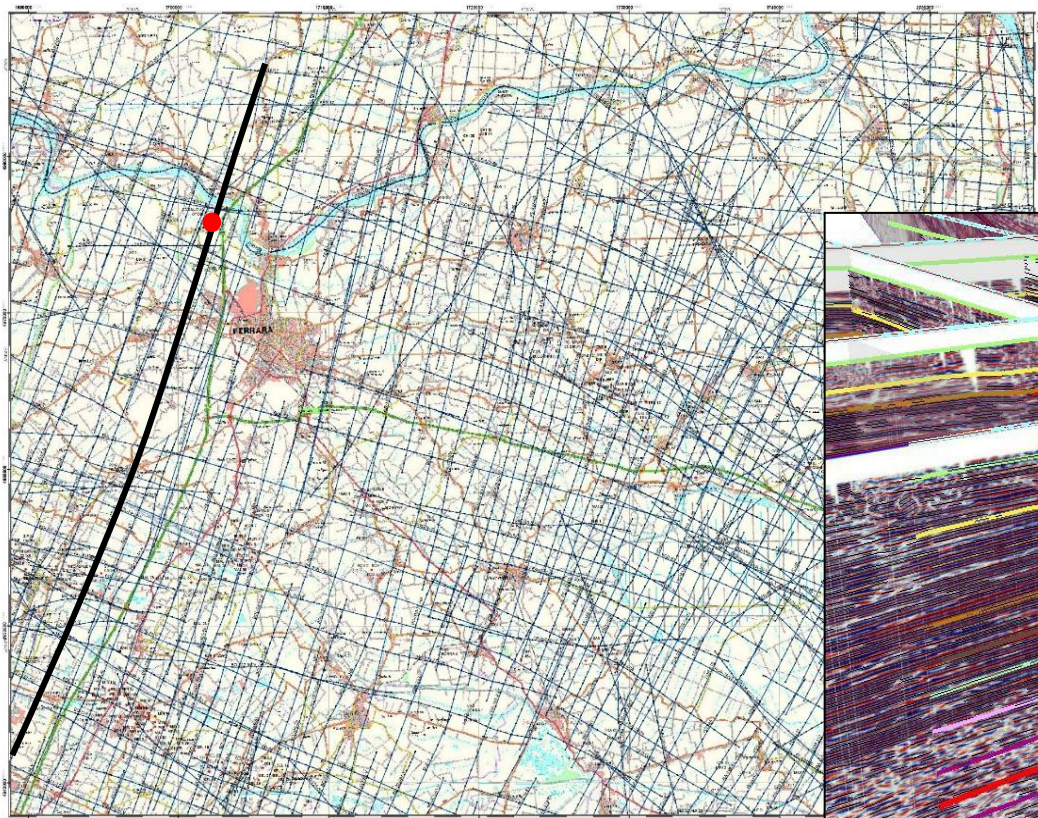
# esempio interpretazione 2D

## costruzione profilo 'geologico'





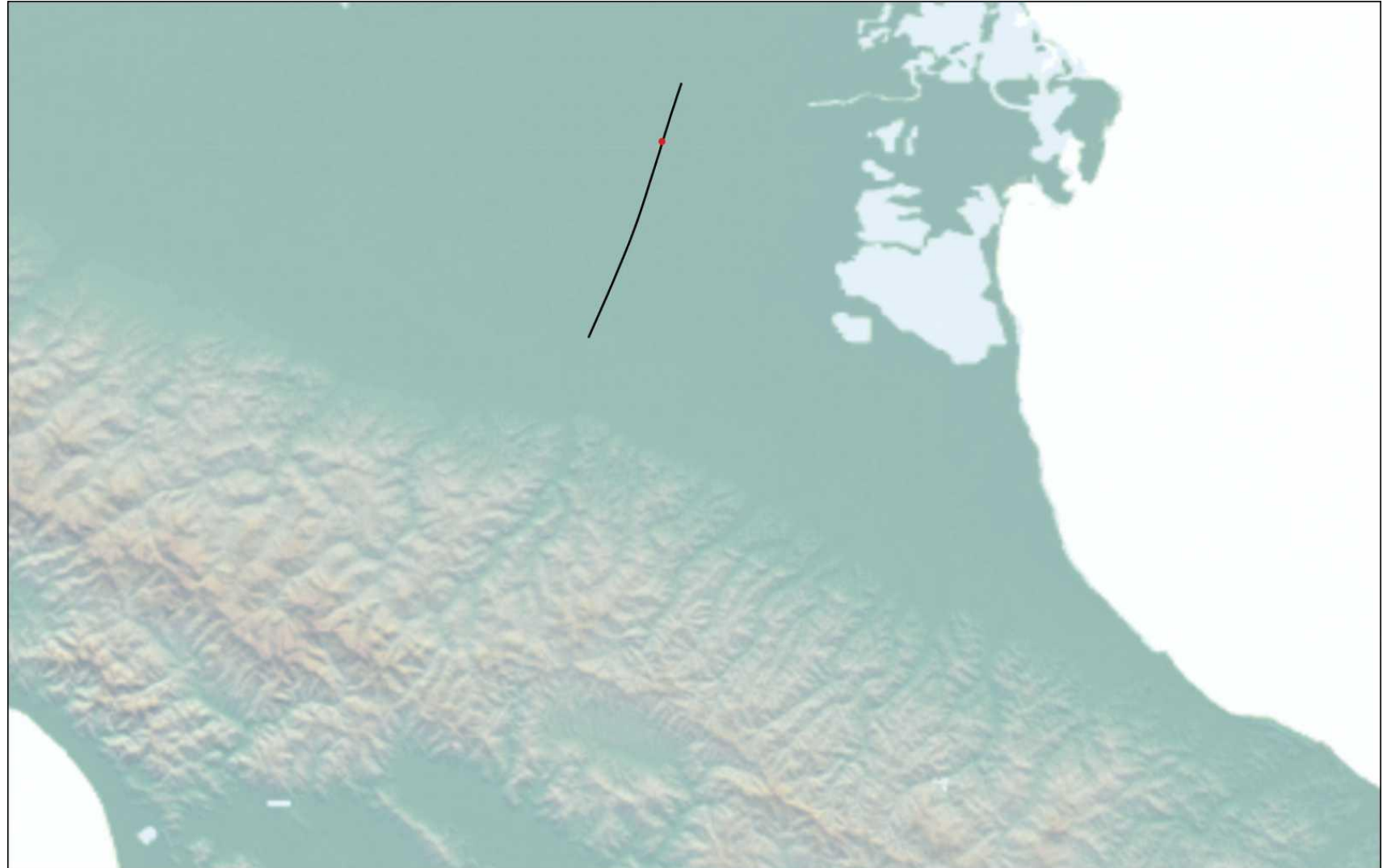
# interpretazione 3D





# Arco Ferrarese

ricostruzione *top*



# Arco Ferrarese

ricostruzione *top*





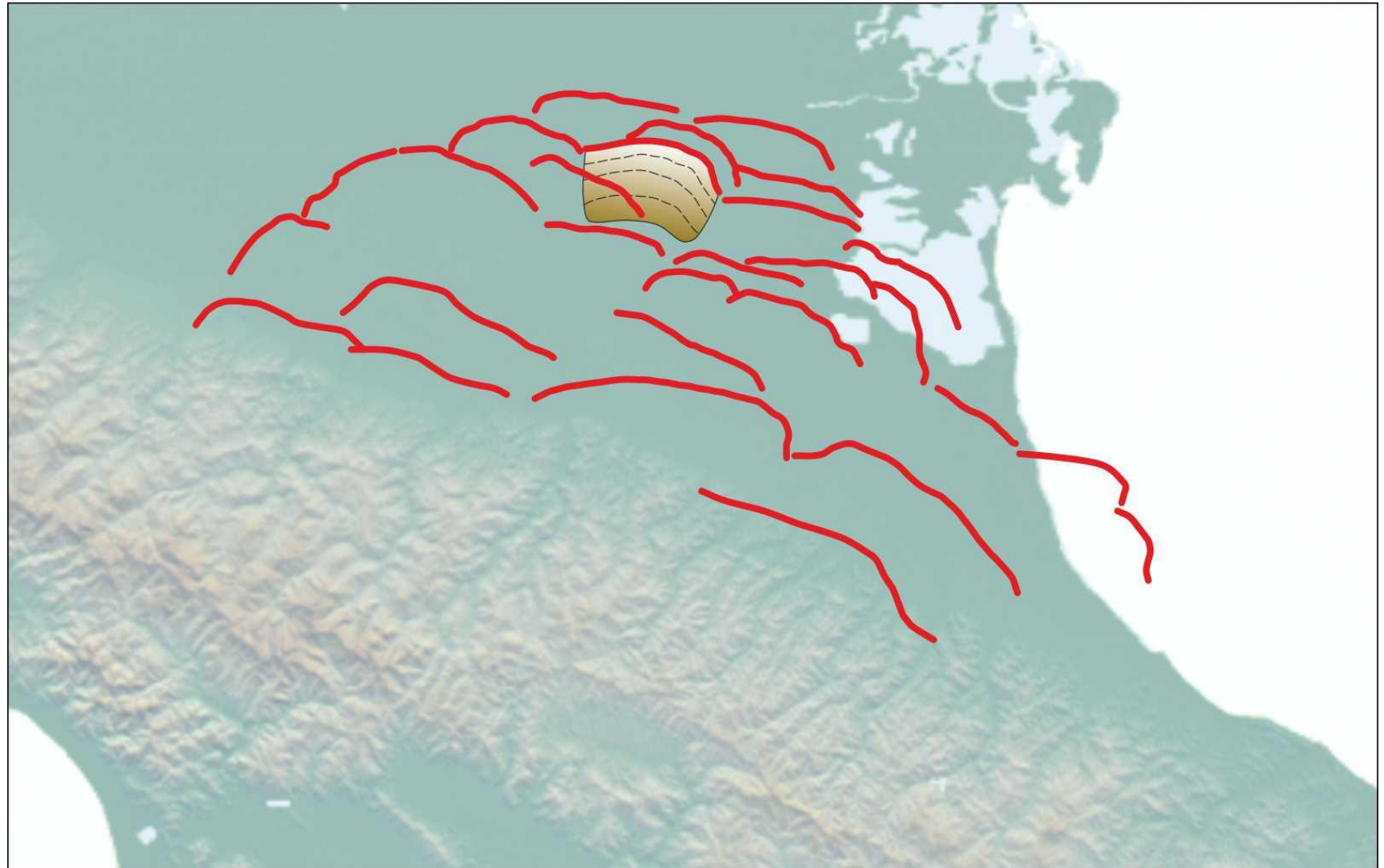
# Arco Ferrarese

ricostruzione sorgente 4° ordine



# Arco Ferrarese

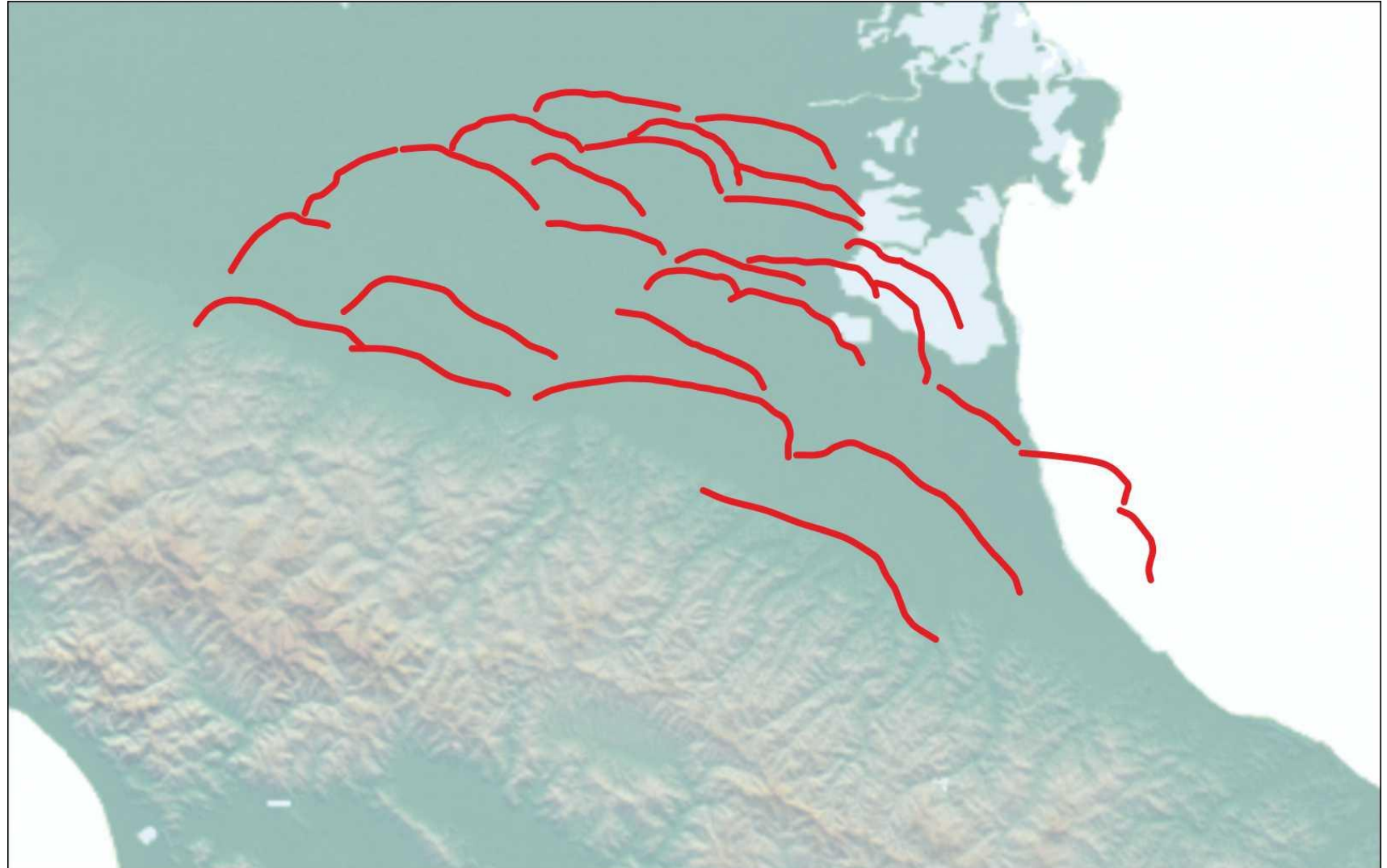
ricostruzione sorgenti 4° ordine





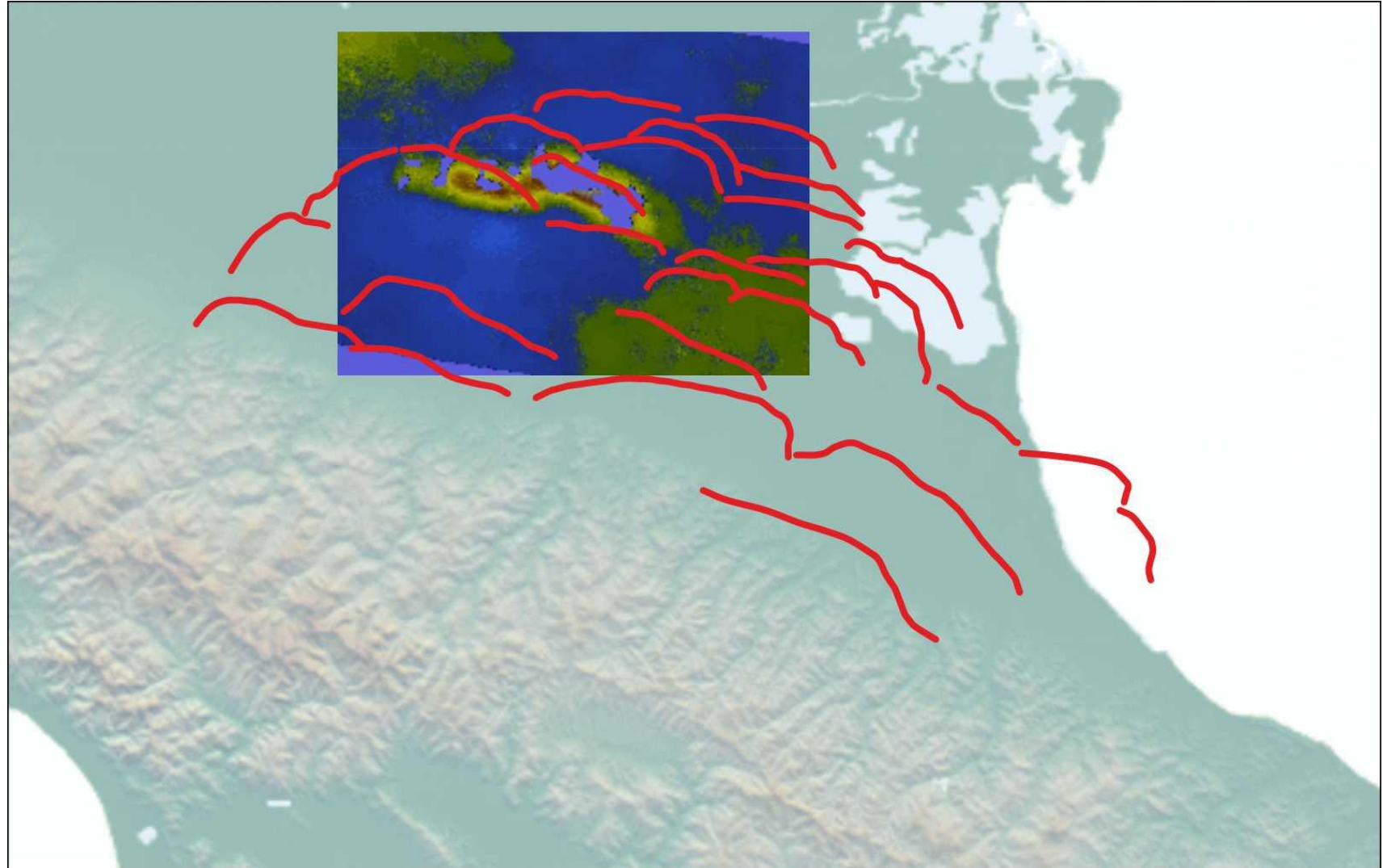
# Arco Ferrarese

sorgenti 4° ordine



# Arco Ferrarese

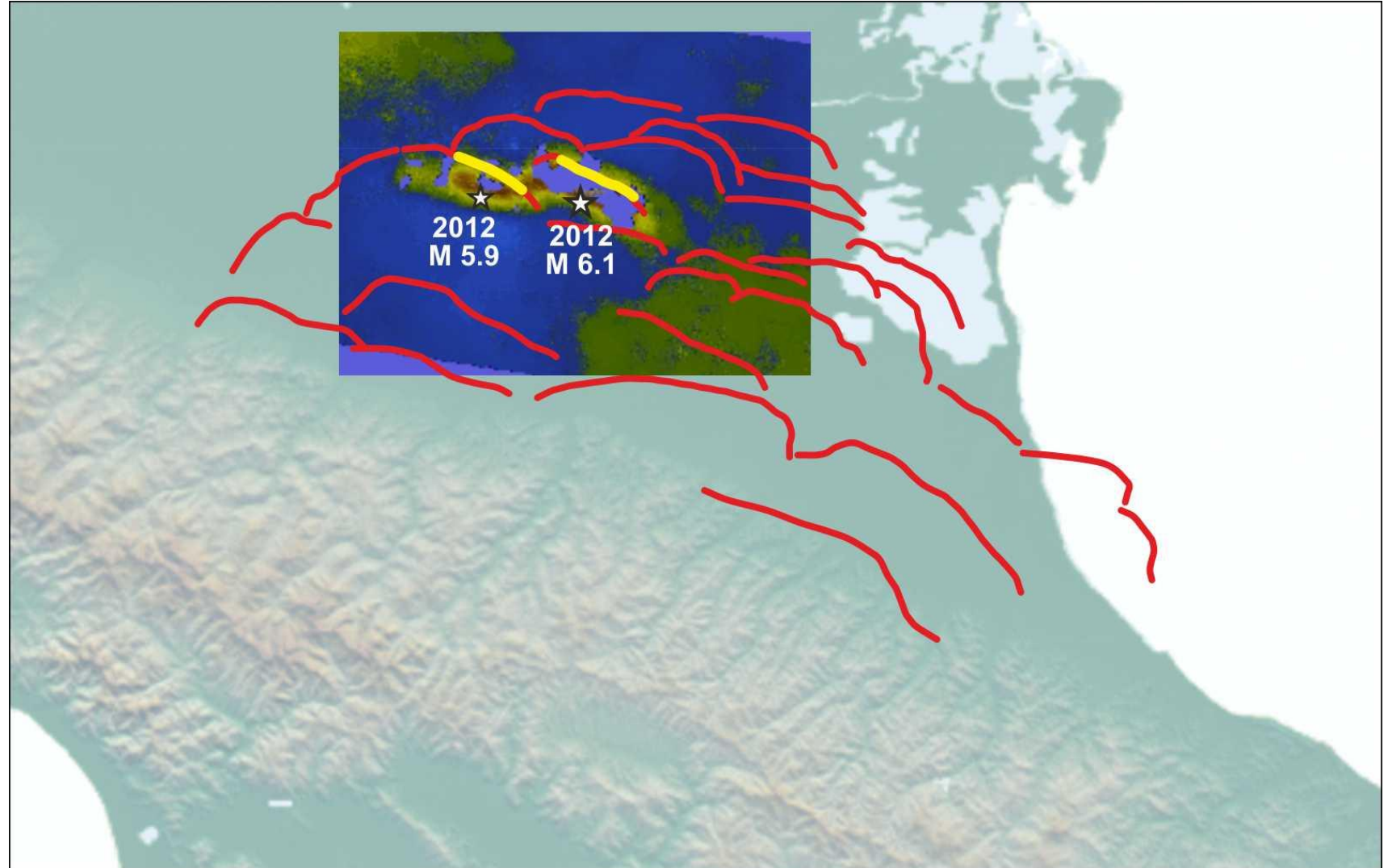
## riattivazioni 2012





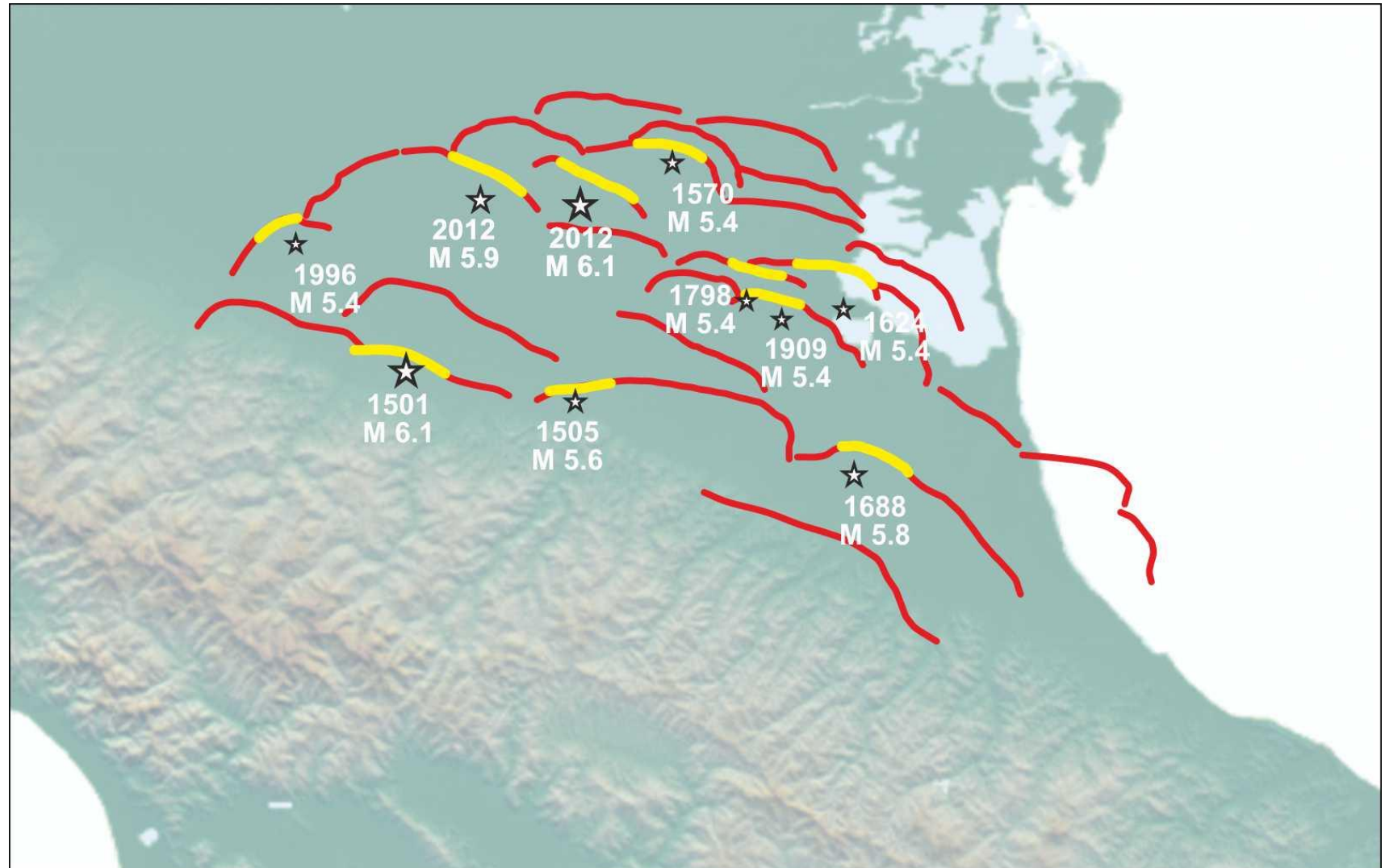
# Arco Ferrarese

## riattivazioni 2012



# Arco Ferrarese

## riattivazioni storiche







**Le conoscenze geologiche  
10 anni dopo**

Venerdì 27 maggio 2022

Bologna | viale della Fiera, 8

Terza Torre | Sala 20 maggio 2012

**Inquadramento sismotettonico  
dell'area epicentrale:  
considerazioni sulla pericolosità  
sismica**

**Riccardo Caputo**



Università di Ferrara