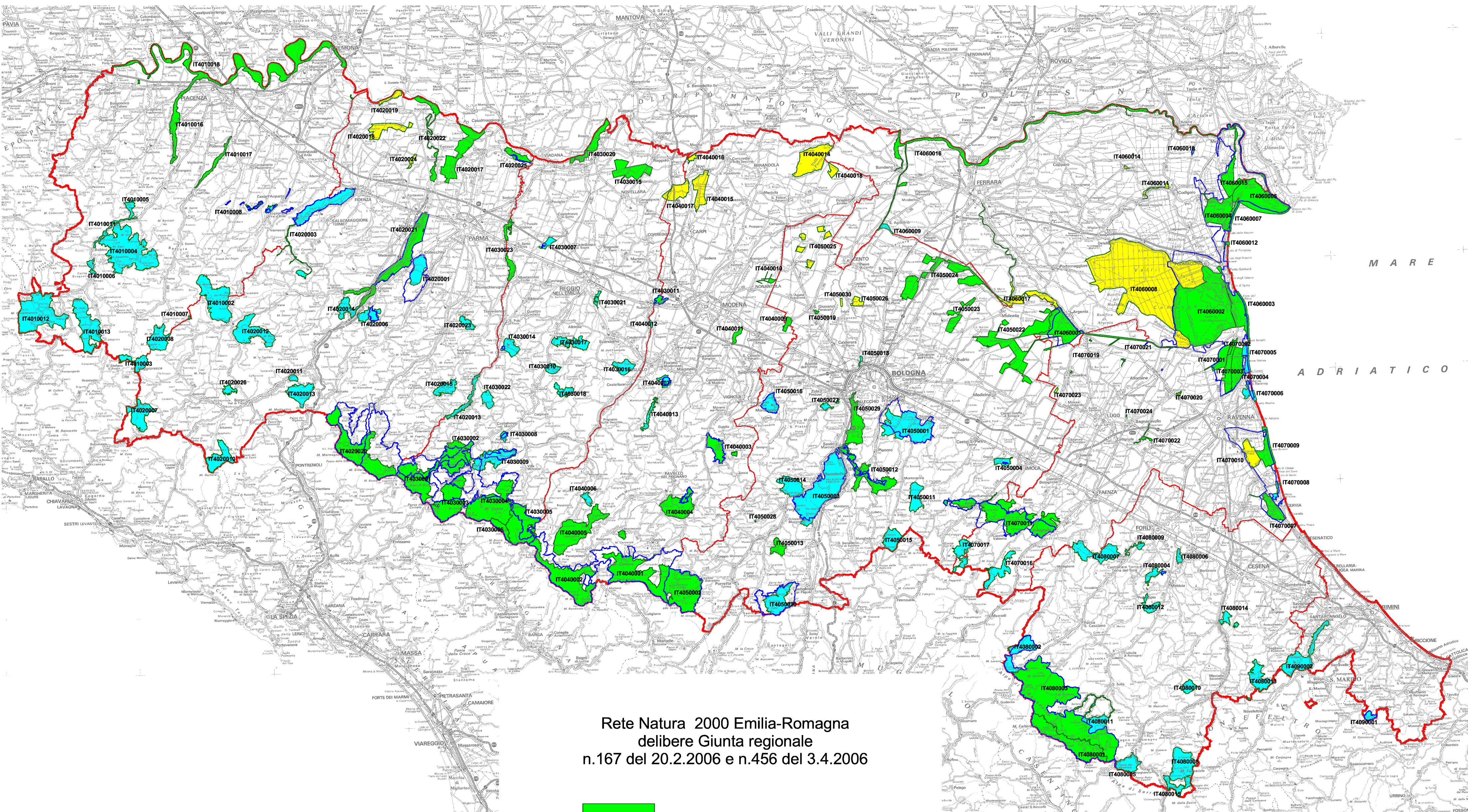







AGGIORNAMENTO 2006



Rete Natura 2000 Emilia-Romagna
delibere Giunta regionale
n.167 del 20.2.2006 e n.456 del 3.4.2006

 Limiti Aree Protette (Parchi e Riserve naturali)
 Limiti provinciali

 SIC-ZPS
 SIC
 ZPS

	numero	ettari
SIC - ZPS	56	142.814
SIC	71	80.945
ZPS	19	33.107
Rete Natura 2000	146	256.866